

Bucknell University Alumni Association
together with Villanova
presents

Celtic Lands

FRANCE ♦ IRELAND ♦ WALES ♦ SCOTLAND

Cruising aboard the Deluxe M.S. LE BORÉAL

April 22 to May 1, 2012

Featuring

DWIGHT DAVID EISENHOWER II

Senior Research Fellow,
University of Pennsylvania

and

CELIA SANDYS

Sir Winston Churchill's
Granddaughter and Biographer



Bucknell UNIVERSITY

Dear Bucknellian:

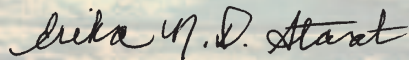
Come cruise with us for eight nights aboard the deluxe M.S. LE BORÉAL in the wake of the unique Celtic peoples who contributed immeasurably to the development and culture of Europe's civilizations. Sail from northern France into the waters of the Celtic and Irish Seas, among misty, legend-haunted islands. View treasures of rich Celtic heritage in Dublin, follow in the footsteps of medieval and modern princes in North Wales and lose yourself in the austere beauty of Scotland's Highlands and its Hebridean and Orkney Islands.

We extend a special invitation to meet distinguished experts Dwight David Eisenhower II, University of Pennsylvania professor and grandson of General and President Dwight D. Eisenhower, and Celia Sandys, Churchill historian and granddaughter of Prime Minister Sir Winston Churchill, each of whom will be joining you for a portion of your cruise to discuss your visit to the hallowed Beaches of Normandy 68 years after Allied forces made their historic D-Day landings. Attend their impressive lectures and hear personal insights imparted during conversations with Ms. Sandys and Mr. Eisenhower.

Experience the ancient legacy of the Celts and their enduring influence in the 21st century on exclusive guided tours. Explore cities, villages and islands that abound with the living Celtic heritage, calling at ports accessible only to a small ship. A Paris Pre-Cruise Option and an Edinburgh Post-Cruise Option are also offered in these two great capital cities.

Join us for this unique travel program not available to the general public. Capacity is limited and this program is a fast sell out every year. I encourage you to book even before the Early Booking Savings date!

'Ray Bucknell,



Erika N. D. Stanat '90
President
Bucknell University Alumni Association



The Long Room of Trinity College's Old Library showcases 200,000 of the library's oldest books, with the Book of Kells on display in the adjacent Treasury.

The Legacy of the Celts

The Celts, whose civilization spanned two thousand years, had no written history, no written language and no prevailing ethnic unity. They never built an empire nor founded a centralized state, yet at the height of their power, in the third century B.C., the Celts' domain extended from the Iberian Peninsula to the Black Sea and from the Mediterranean Sea to the North Sea. Today, the Celts are most associated with the heritage, cultural identity and national consciousness of Ireland, and their roots run deep in Wales, Scotland and Normandy, whose original languages were once Celtic dialects.

U.S./Paris, France/Honfleur Sunday and Monday, April 22 and 23

Depart the U.S. for Paris, France.

On arrival, transfer to Honfleur and embark the M.S. LE BORÉAL. This evening, David Eisenhower provides fascinating context about the concept, planning and personalities of *Operation Overlord*, the Allies' code name for the World War II military campaign that launched the world-changing airborne and amphibious assault on Normandy, on D-Day, 68 years ago.

Caen/Normandy Beaches

Tuesday, April 24

Dock in Caen and travel through the scenic countryside to the historic Normandy Beaches. In the company of David Eisenhower, walk where Allied forces landed at the direction of his famous grandfather, on June 6, 1944. Follow Eisenhower as he steps respectfully among the solemn crosses and Stars of David in the American Military Cemetery at St. Laurent, overlooking Omaha Beach. Envision the brave American rangers who scaled 200-foot heights to capture German gun emplacements at Pointe du Hoc.

Later, see remnants of Mulberry Harbor, constructed to support Allied landings, and then view exhibits chronicling the campaign at the D-Day Museum, or you may choose to see the famous 230-foot-long Bayeux Tapestry, a stunning visual chronicle of the Norman conquest of 1066.

This evening, attend the Captain's welcome reception and dinner.

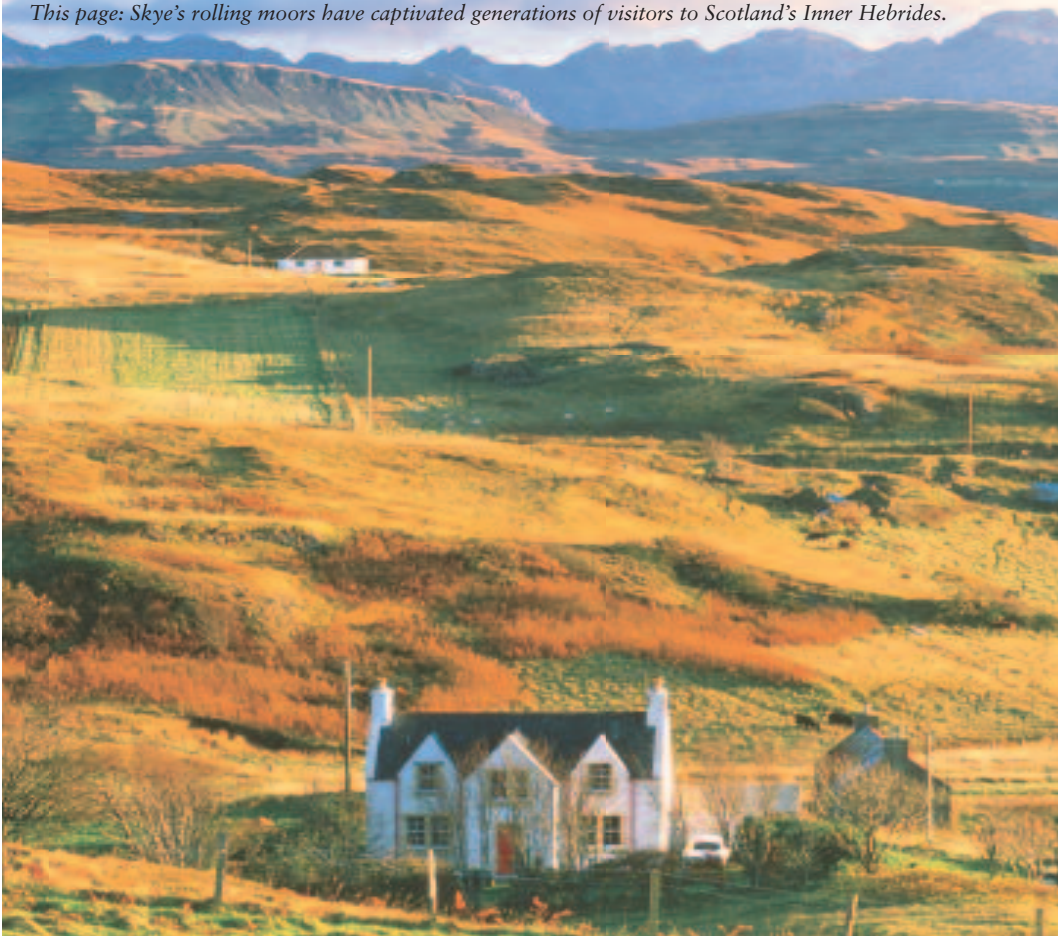
At Sea

Wednesday, April 25

Cruise the English Channel and the Celtic Sea. Join Eisenhower as he imparts captivating details about the role of his grandfather, whose leadership reshaped the world.

Cover: Duart Castle on the Isle of Mull, built in the 13th century, is the seat of Scotland's Clan Maclean.

This page: Skye's rolling moors have captivated generations of visitors to Scotland's Inner Hebrides.





Explore Edward I's impressive Caernarfon Castle, the largest of 13th-century fortresses across North Wales.

Dublin, Ireland Thursday, April 26

Built astride the River Liffey, Ireland's historic capital has retained its rich heritage of Georgian architecture while confidently playing a major role in the New Europe. Begin your morning with an overview tour of the city. Visit the National Museum of Ireland, known for its exhibits of Celtic and Viking artifacts, including magnificent gold torques and the incomparably beautiful eighth-century Tara Brooch. Stroll through the stately quadrangles of Trinity College and, in its library, view the incandescent illuminations of the ninth-century *Book of Kells*.

The afternoon is free for independent pursuits. Choose to wander along colorful Grafton Street or savor a pint of Guinness in a typical neighborhood pub. Depart from Dublin this evening.

Holyhead, Wales/ Caernarfon Castle Friday, April 27

From Holyhead, travel across the isle of Anglesey and over the Menai Strait. Here, in North Wales, one of the cradles of Celtic culture, the people hold fast to the old ways and Welsh remains their mother tongue.

Visit beautiful Bodnant Garden, one of the finest examples of 19th-century Victorian landscape artistry. Enjoy lunch in a local restaurant and a stirring choir performance of Welsh hymns. Afterward, continue to the imposing Caernarfon Castle, an impregnable 13th-century fortress built by Edward I of England as a defense against the marauding Welsh. Heirs to the British throne have been invested with the title of "Prince of Wales" at Caernarfon since 1301 and most recently with the investiture of Charles as Prince of Wales by his mother, Queen Elizabeth II, in 1969.

See the beautiful glacier-sculpted peaks and valleys of the Snowdonia Mountains, forested in dark green conifers interspersed with winding streams and cascading waterfalls.

Isle of Iona, Scotland/ Tobermory, Isle of Mull Saturday, April 28

Go ashore on the Hebridean Isle of Iona, birthplace of Scottish Christianity. In A.D. 563, the Irish monk Columba founded a monastery here, where scribes would spend their entire lives painstakingly copying and illuminating not only religious tracts, but also transcribing the ancient Celtic sagas into written form, preserving a record of oral bardic tradition.

The traditional way of life in the Scottish Isles remains unchanged by the passage of centuries in the colorful fishing port of Tobermory, where brightly painted houses overlook the Sound of Mull.





mightiest link in his Iron Ring



The American Military Cemetery at St. Laurent, France, honors the soldiers who made the ultimate sacrifice during the D-Day Landings.

In later years, Iona became the burial place of Scotland's kings, including Duncan and Macbeth. Upon arrival at the Abbey, view the churchyard's intricate Celtic crosses and stroll through the serene, restored monastery. Afterward, cross the Sound of Iona by ferry to the neighboring Isle of Mull, and continue east along the shore of Loch Scridain, watching for shorebirds, seals and red deer. Visit the 13th-century Duart Castle, the ancestral home of the Clan Maclean. A boxed lunch will be served at the castle. Conclude this afternoon in the sheltered port of Tobermory, where houses painted in vivid shades of blue, red and green are nestled between the hills and the harbor. After free time in Tobermory, reboard the ship and depart for Skye.

Portree, Isle of Skye **Sunday, April 29**

Known as "the Winged Island" after its birdlike shape, Skye is the largest and most scenic of the Inner Hebrides. Travel the expansive shadowed landscapes en route from Portree to Dunvegan Castle, the seat of the powerful Clan MacLeod since 1270 and built atop a rocky promontory overlooking the sea. Tour Dunvegan's richly appointed public rooms and view the Fairy Flag, a silken banner that legend claims to have had the power to save the clan from defeat on three occasions. View the castle's lush gardens, ablaze with azaleas and rhododendrons. Return to Portree by way of the island's western shore and across its starkly beautiful interior land of rolling green moors laced with clear, rushing streams and dotted with the fragrant yellow gorse flowers, set against the rugged profile of the Cuillin Hills.

This afternoon, cruise through the Sound of Raasay, with Skye's craggy Trotternish Peninsula's interesting rock formations and rolling green moorland to the west.

Kirkwall, Orkney Islands **Monday, April 30**

This morning, explore the Orkneys' Neolithic monuments, a designated UNESCO World

Heritage Site. View the Ring of Brodgar, whose stone monoliths were raised more than 3,500 years ago to chart the seasons. In Skara Brae, walk through a 5,000-year-old settlement built entirely of stone—houses, hearths and furniture. Upon return to Kirkwall, an attractive coastal town of sturdy granite houses, visit the impressive St. Magnus Cathedral, the best-preserved medieval house of worship in Scotland, constructed in the mid-12th century of locally quarried red sandstone by the Orkneys' Norse rulers.

Spend your afternoon at sea and attend the Captain's farewell reception this evening.

Edinburgh/U.S. **Tuesday, May 1**

Transfer to the airport and return to the U.S., arriving later today, or begin a city tour of Edinburgh on the Post-Cruise Option.

Paris Pre-Cruise Option*

Named for its original Celtic inhabitants, Paris is an ideal two-night prelude to your cruise. Tour the private, 19th-century mansion and art collection of the Musée Jacquemart-André and see Paris' most famous landmarks. Accommodations are in Paris' deluxe INTERCONTINENTAL PARIS LE GRAND, located adjacent to the Opéra Garnier.

Edinburgh Post-Cruise Option*

Intertwining with Celtic history for almost a millennium, Scotland's Edinburgh is an exceptional two-night conclusion to your cruise. Tour the brooding 12th-century Edinburgh Castle, visit the Museum of Scotland and see the city's Neoclassical and Georgian architectural treasures. Your accommodations for two nights are in the deluxe SHERATON GRAND HOTEL, centrally located on Festival Square, near Edinburgh Castle.

**Pre-Cruise and Post-Cruise Options are available at additional cost. Details will be included with your reservation confirmation.*



M.S. LE BORÉAL

Small Ship, State-of-the-Art Design

The M.S. LE BORÉAL, launched in 2010, represents the newest generation of deluxe small ships with only 120 staterooms and features distinctive French sophistication.

Spacious Suites and Staterooms, Most with Balconies

Ninety-five percent of the large, deluxe, air-conditioned, outside Staterooms and Suites (from 200 to 484 square feet) feature private balconies. Most accommodations have two twin beds that convert to one queen-size bed; each has a private bathroom with shower (bathtub in limited number of staterooms) and the luxurious amenities of a fine hotel, including: individual climate control, satellite flatscreen television, wireless Internet access, safe, minibar, full-length closet, writing desk/dressing table and plush robes.

Chic and Casual Dining

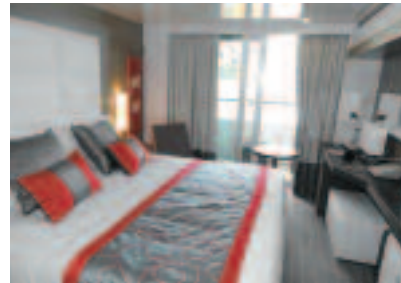
International and regional cuisine is served in the stylish, spacious La Licorne dining room in single, unassigned seatings, alfresco in the casual indoor-outdoor La Boussole restaurant or from 24-hour room service. Continental and buffet breakfast, buffet lunch, afternoon tea and a four-course dinner are served daily. Complimentary wine and beer are served with lunch and dinner.

Spacious Public Areas/ World-Class Service and Facilities

Inviting and spacious public areas accommodate all passengers comfortably. Enjoy views from the Panoramic Lounge, nightly entertainment in the Main Lounge and lectures, cultural performances and film screenings in the state-of-the-art theater. There is a library, Internet salon, Sun Deck, swimming pool, beauty salon, spa, Turkish bath-style steam room, full range of fitness equipment and two elevators. The infirmary is staffed with a doctor and nurse. The highly trained and personable English-speaking international crew provides attentive service.

Respect for the Environment

The state-of-the-art propulsion system provides an exceptionally smooth, quiet and comfortable voyage by creating little vibration and significantly reduced engine noise. The ship is designed to prevent contact with environmentally sensitive seabeds and meets the latest "Clean Ship" standards. The ship has two tenders.



Stateroom with balcony



Dining Room



Lounge



Sun Deck

Featured Guest Speakers

David Eisenhower and *Celia Sandys*

Attend dynamic lectures and enjoy informal discussions with our expert historians intimately familiar with two of the most powerful world leaders of the 20th century and World War II.

DWIGHT DAVID EISENHOWER II, grandson of General and President Dwight D. Eisenhower, is a noted historian of World War II and the Cold War. His 1986, 900-page bestseller, *Eisenhower: At War 1943-1945*, was a finalist for the Pulitzer Prize in history.

David is Senior Fellow of the Foreign Policy Research Institute and a Public Policy Fellow at the Annenberg School of Communication and the School of Arts and Sciences at the University of Pennsylvania, where he teaches "Communication and the Presidency."



CELIA SANDYS, granddaughter of Prime Minister Sir Winston Churchill, is a Churchill historian, acclaimed author, journalist, television presenter and speaker.

Celia has written five books about Sir Churchill, combining intensive historical research with anecdotes of the man she knew as "Grandpapa." The book *Chasing Churchill* (2003) is the basis for the 2007 PBS documentary narrated by Celia and featuring her grandfather's extensive military, political and private travels, including many journeys on which she accompanied him.

In *We Shall Not Fail: The Inspiring Leadership of Winston Churchill* (2003), Celia describes the leadership principles that enabled Churchill to lead his country and the rest of the free world to overwhelming victory against Nazi Germany and its allies in World War II.

Scheduled guest speakers may be altered due to circumstances beyond our control. See Terms and Conditions.

Gain a unique and personal perspective on two of the most distinguished figures of the 20th century and World War II, Sir Winston Churchill and Dwight D. Eisenhower.



Acclaimed Guest Speakers

Historians Celia Sandys and David Eisenhower, grandchildren of Prime Minister Sir Winston Churchill and General and President Dwight D. Eisenhower, lecture about the D-Day Beaches.

- ◆ *Operation Overlord*—David Eisenhower lectures on the concept, planning and personalities behind D-Day.
- ◆ *Triumph and Tragedy*—Eisenhower provides context so you better understand the big-picture consequences of the Normandy Landings.
- ◆ *Memories of My Grandfather at Home*—Celia Sandys offers personal recollections of Winston Churchill as she describes growing up with him and traveling with him as a teenager.
- ◆ *The Inspiring Leadership of Winston Churchill*—Sandys discusses how Churchill's legacy is as relevant today as it was 60 years ago.
- ◆ Informal conversations with David Eisenhower and Celia Sandys during excursions and aboard the M.S. LE BORÉAL.

Included Features

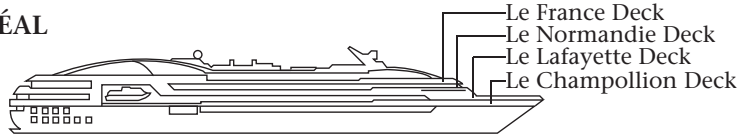
On board the deluxe M.S. LE BORÉAL

- ◆ Eight-night cruise from Honfleur, France, to Edinburgh, Scotland. Port calls at Caen (for Normandy Beaches), France; Dublin, Ireland; Holyhead, Wales; Hebridean Isles of Iona, Mull (for Tobermory), and Skye (for Portree) and Orkney Islands (for Kirkwall), Scotland.
- ◆ Spacious, deluxe outside accommodations with private bathroom and individual climate control.
- ◆ Captain's welcome and farewell receptions.
- ◆ All meals—continental breakfast, buffet breakfast, buffet lunch, afternoon tea and dinner—throughout the cruise, featuring fine international and regional cuisine, served at single, unassigned seatings.
- ◆ *Complimentary* wine and beer served with lunch and dinner.
- ◆ Full-day D-Day **Normandy Beaches** excursion with lunch in Arromanches; visit to the **D-Day Museum** or the historic **Bayeux Tapestry**.
- ◆ City tour of **Dublin**, featuring the National Museum of Ireland and the **Book of Kells**.
- ◆ Visit to **Bodnant Garden** and **Caernarfon Castle**, a UNESCO World Heritage Site, and drive through the Snowdonia Mountains, Wales.
- ◆ Excursion to historic **Abbey of Iona**; scenic ferry crossing to Isle of Mull and transfer to **Duart Castle** en route to **Tobermory**, with box lunch.
- ◆ Isle of Skye scenic excursion to the historic Clan MacLeod's **Dunvegan Castle**.
- ◆ Visit to the UNESCO World Heritage sites of Orkney Islands' **Neolithic Ring of Brodgar** and **Skara Brae**; walking tour of medieval **Kirkwall**.

Enhanced Travel Services

- ◆ All transfers and luggage handling abroad for all participants who have purchased their air tickets through Gohagan & Company and whose arrival(s)/departure(s) coincide with the scheduled group transfer(s).
- ◆ All excursions and visits, as outlined in the itinerary, with experienced local guides.
- ◆ Gratuities to local guides and drivers.
- ◆ Hospitality desk aboard the ship.
- ◆ Experienced Travel Director to accompany you throughout the travel program.
- ◆ Travel document wallet, name badge and pre-departure information.
- ◆ Automatic \$250,000 flight insurance policy for each participant ticketed on flights by Thomas P. Gohagan & Company.

M.S. LE BORÉAL



Land/Cruise Tariff (per person, based on double occupancy)			
Stateroom Category*	Description- Staterooms range from 200 to 484 sq. ft. and most have two twin beds that convert to make one queen bed. All feature a private bathroom and individual climate control.	Early Booking Price through October 5, 2011	Regular Price after October 5, 2011
8	Ocean-view, one large window, shower. <i>Le Champollion Deck, forward.</i> (limited availability)	\$5435	\$6435
7	Ocean-view, small window and door onto private, partial wall balcony, shower. <i>Le Champollion Deck, aft.</i> (limited availability)	\$6435	\$7435
6	Ocean-view, small window and door onto private, partial wall balcony, shower. <i>Le Champollion Deck, midship</i>	\$6935	\$7935
5	Ocean-view, sliding glass door onto private, partial wall balcony, shower. <i>Le Lafayette Deck, forward.</i>	\$7035	\$8035
4	Ocean-view, sliding glass door onto private balcony, shower. <i>Le Lafayette Deck, midship.</i>	\$7735	\$8735
3	Ocean-view, sliding glass door onto private, partial wall balcony, shower. <i>Le Normandie Deck, forward.</i>	\$8035	\$9035
2	Ocean-view, sliding glass door onto private balcony, shower or tub/shower. <i>Le Normandie Deck, midship.</i>	\$8635	\$9635
1	Ocean-view, sliding glass door onto private balcony, shower or tub/shower. <i>Le France Deck.</i>	\$9035	\$10035
Deluxe Suite	Ocean-view, sliding glass door onto private balcony, tub/shower and sitting area with sofa. <i>Le France Deck.</i> (limited availability)	\$9835	\$10835
Prestige Suite II	Two-room, ocean-view, sliding glass door onto large private balcony, two bathrooms: tub/shower and shower, large sitting area with sofa, two closets, writing desk and dressing table. <i>Le Normandie Deck.</i> (limited availability)	\$10835	\$11835
Prestige Suite I	Two-room, ocean-view, sliding glass door onto large private balcony, two bathrooms: tub/shower and shower, large sitting area with sofa, two closets, writing desk and dressing table. <i>Le France Deck.</i> (limited availability)	\$11835	\$12835
♦ An Owner's Suite (<i>Le France Deck</i>) is available upon request at a cost to be advised, on a first-come first-served basis.			
♦ Singles are available in category 6 at \$10235 and in category 4 at \$11435 on or before October 5, 2011. Add \$1000 for reservations made after October 5, 2011.			
♦ Taxes are an additional \$395 per person and are subject to change.			
*M.S. LE BORÉAL has been specially contracted for this tour, and the applicable deck plan is available on request from Gohagan & Company and reflects the only valid cabin categorization of the vessel.			

Celtic Lands Reservation Form

Send to: Thomas P. Gohagan & Company
 Eleven South LaSalle Street, Second Floor
 Chicago, IL 60603-1240
 Phone: (800) 922-3088/Fax: (312) 609-1141

Title Full name (exactly as it appears on your passport) Bucknell Class Year

Title Full name (exactly as it appears on your passport) Bucknell Class Year

Address (no P.O. Box number please)

City State ZIP Code

Telephone: (Home) (Business)

Email Address (Mobile)

Preferred name(s) on badge(s) Tour No. 043-04/22/12-010

Program reservations require a deposit of \$800 per person and \$200 per person Paris Pre-Cruise Option and/or \$200 per person Edinburgh Post-Cruise Option. By forwarding of deposit, I/we accept and agree to the Terms and Conditions.

Enclosed is my/our check(s) for \$_____ as deposit. Make checks payable to **Thomas P. Gohagan & Company.**

I/We authorize you to charge my/our deposit of \$_____ to:
 Visa MasterCard

Card Number Exp. Date

Signature as it appears on credit card

All FINAL PAYMENTS are required to be made by check or wire transfer by January 18, 2012.

Please make my/our reservation(s) in category:

1st Choice _____ 2nd Choice _____

- Double occupancy (one queen bed).
- Double occupancy (two twin beds).
- Single accommodations.
- I am reserving as a single but prefer to share accommodations and will allow you to select my roommate (shares cannot be guaranteed).

Please make my/our reservation(s):
Paris Pre-Cruise Option

- Double at \$895 per person.
- Single at \$1395 per person.
- I am reserving as a single but prefer to share accommodations and will allow you to select my roommate (shares cannot be guaranteed).

Edinburgh Post-Cruise Option

- Double at \$695 per person.
- Single at \$995 per person.
- I am reserving as a single but prefer to share accommodations and will allow you to select my roommate (shares cannot be guaranteed).

I/We want you to book my/our air from _____

(fill in departure city) to Paris, France, with return from Edinburgh, Scotland, at additional cost to be advised.[‡]

Class: Economy Business First

[‡]Note: Airfare is subject to change and availability and is nonrefundable.

I/we will make my/our own air arrangements.



Tour the Abbey of Iona, Scotland's holiest spot since the sixth century A.D. and traditionally believed to be where the Book of Kells was created.

**CONTRACT: TERMS & CONDITIONS.
IMPORTANT READ CAREFULLY.**

RESPONSIBILITY: Thomas P. Gohagan & Company, the sponsoring institution or association, and its and their employees, shareholders, subsidiaries, affiliates, officers, directors or trustees, successors, agents, and assigns (collectively "Gohagan"), do not own or operate any entity which is to or does provide goods or services for your trip including, for example, lodging facilities, airline, vessel, or other transportation companies, guides or guide services, local ground operators, providers or organizers of optional excursions, food service providers, etc. All such persons and entities are independent contractors. As a result, Gohagan is not liable for any negligent or willful act or failure to act of any such person or entity of any third party.

In addition and without limitation, Gohagan is not responsible for any injury, loss, death, inconvenience, delay, or damage to person or property in connection with the provision of any goods or services whether resulting from, but not limited to, acts of God or force majeure, acts of war or civil unrest, insurrection or revolt, animals, strikes or other labor activities, criminal or terrorist activities of any kind, sickness, illness, the lack of availability of or access to appropriate medical attention, overbooking or downgrading of accommodations, mechanical or other failure of airplanes or other means of transportation, or for any failure of any transportation mechanism to arrive or depart on time.

If due to weather, flight schedules or other uncontrollable factors, you are required to spend an additional night(s), you will be responsible for your own hotel, transfers and meal costs. Baggage is entirely at owner's risk. The right is reserved to decline to accept or retain any person as a participant on these trips at any time. Specific room/cabin assignments are within the sole discretion of the hotel/cruise line.

Gohagan reserves the right to change the itinerary or trip features at any time and for any reason, with or without notice, and Gohagan shall not be liable for any loss of any kind as a result of any such changes. Ship schedules, port calls, hours of arrival and departure, sightseeing events, special programs and guest lecture series (if applicable), are subject to change or cancellation without prior notice. Gohagan is not responsible therefore and is not required to compensate passengers under these circumstances. Gohagan may cancel a trip (or an option) for any reason whatsoever; if so, its sole responsibility is to refund monies paid by the participant to it. Gohagan is not required to cancel any trip for any reason including without limitation, United States Department of State, World Health Organization or other Warnings or Advisories of any kind. Gohagan is not responsible for penalties assessed by air carriers resulting from operational and/or itinerary changes, even if Gohagan makes the flight arrangements or cancels the trip. Gohagan reserves the right to substitute vessels, hotels or attractions of a similar category for those listed in this brochure.

NOT INCLUDED: Taxes; passport, visas and associated fees; personal expenses such as laundry, telephone calls and Internet access; accident/sickness, trip cancellation, and baggage insurance; gratuities to ship and hotel personnel; optional sightseeing excursions; excess baggage charges on aircraft; local departure air/airport tax(es); airfare and associated local taxes, airport facility and security taxes and federal inspection fees not listed in the "Included Features" section of the brochure; transfers and baggage handling to/from airport/hotel/ship on day(s) of arrival and/or departure if you have not purchased your international air arrangements through Gohagan or if you are arriving earlier or later than and/or departing earlier or later than the scheduled group transfer(s); any overnight on land due to flight schedule(s); meals, alcoholic or other beverages and all other services not specifically mentioned in the "Included Features" section.

AIRFARE: Airfare is subject to change and availability and is nonrefundable. Your airline ticket constitutes a contract between you and the airline, even if purchased through Gohagan.

LUGGAGE: Luggage allowance policies are set by the airlines and may change without prior notice. Please contact your airline(s) for the most current luggage allowance policy.

HEALTH: Any physical or mental condition that may require special medical attention or physical assistance (for example, the need for a wheelchair) must be reported in writing when you make your reservation. Participants must be able to climb stairs and step over raised thresholds or bulkheads aboard the ship without assistance.

DISCOUNTED RESERVATIONS: Discounts apply only to those reservations received in the offices of Gohagan in writing, accompanied by the required deposit, by October 5, 2011. In the event a "discounted" reservation must be cancelled, no "replacement" reservation can be substituted at the discounted rate. A "replacement" reservation is a new reservation and can be substituted only at the full-fare tariff. Cancellation penalties may apply.

PRSR STD
U.S. Postage
PAID
Gohagan &
Company

Bucknell University Alumni Association
90 University Avenue
Lewistown, PA 17837

CANCELLATIONS: Cancellations for all or any part of the trip including Pre/Post Program(s) reservation(s) will not be effective until received in writing in the offices of Gohagan. Should you have to cancel, the following terms will apply: reservation cancellation(s) are subject to a \$200 (\$50 Pre/Post Program(s)) per person administrative fee from the time of booking through 120 days prior to departure; from 95 through 119 days prior to departure, \$800 (\$200 Pre-/Post-Program(s)) per person; from 60 through 94 days prior to departure, 50% of the published full regular tariffs; cancellations 59 days or less prior to departure, a no-show, or early return from the trip will result in forfeiture of 100% of the published full regular tariffs. In addition, any applicable airline cancellation fees, optional excursion cancellation fees and administrative fees may apply.

TRIP INSURANCE: Because our cancellation policies are strictly enforced, we strongly recommend that you purchase trip cancellation insurance. In the event that you must cancel your participation in a travel program, trip cancellation insurance may be the only source of reimbursement. Trip cancellation insurance is available through Thomas P. Gohagan & Company and others for comprehensive coverage of such expenses in conjunction with cancellation due to illness or accident, and damaged or lost luggage. We will send you an application upon receipt of your reservation.

RATES: Prices quoted are based on fares in effect at the time of printing and are subject to change at any time. Gohagan reserves the right to increase the tour price in the event of cost increases due to changes in airfares, currency fluctuations or fuel or energy surcharges and all such increases are to be paid to Gohagan upon notice to the tour participant of such increases.

REGISTRATION: CST#: 2031868-40, WST#: 601 767 666, OST#: TA 0905.

ARBITRATION AGREEMENT: Any controversy or claim arising out of or relating in any way to these Terms and Conditions, the brochure, or any other information relating in any way to the trip, or to the trip itself, shall be settled solely and exclusively by binding arbitration in Chicago, Illinois, in accordance with the commercial rules of the American Arbitration Association then existent.

The arbitrator and not any federal, state, or local court or agency shall have exclusive authority to resolve any dispute relating to the interpretation, applicability, enforceability, conscionability, or formation of this contract, including but not limited to any claim that all or any part of this contract is void or voidable.

ACCEPTANCE OF CONTRACT: By forwarding of deposit, the participant certifies that he/she does not have any mental, physical or other condition of disability that would create a hazard for him/herself or other participants and accepts the terms and conditions of this contract.

Photo Credits: Alamy; Photoshot; Scotland Tourist Board; all images are rights managed and cannot be used without permission.



THOMAS P. GOHAGAN & COMPANY
Eleven South LaSalle Street
Second Floor
Chicago, Illinois 60603-1240
(312) 609-1140 or (800) 922-3088

© Thomas P. Gohagan & Company