



THE BUCKNELL EXPERIENCE

A GUIDE FOR ENTERING STUDENTS AND FAMILIES 2010-11



Bucknell
UNIVERSITY

Office of the Parents Fund and Family Programs
Bucknell University
Lewisburg, PA 17837
www.bucknell.edu/parents



Parents Fund and Family Programs
Bucknell University
Lewisburg, Pennsylvania 17837

Phone: 570-577-3200
Fax: 570-577-3610
www.bucknell.edu

Bucknell
UNIVERSITY

UPCOMING FAMILY WEEKEND DATES

October 1 – 3, 2010
September 23 – 25, 2011
September 21 – 23, 2012

Please save this book.
It will be the only one you receive.

This publication was produced by the
Parents Fund and Family Programs Office

You may contact the office:
570-577-3687 or
e-mail: parents@bucknell.edu
www.bucknell.edu/Parents

July 2010

Dear Bucknell Parents and Families:

My wife, Laurie, and I are delighted that your family has chosen to be part of our special University community.

The enclosed handbook has been compiled for entering Bucknell families. It is intended to assist you in your student's transition to life at Bucknell University. We found it very helpful when our sons Gordon, class of 2010, and Jason, class of 2012 prepared for their first years at Bucknell. These guidebooks are sent only to parents of entering students. I encourage you to keep it in a handy place for reference during the next four years.

In the handbook you will learn about orientation activities for students as well as upcoming dates for Family Weekend. You will also find answers to many questions regarding University programs, regulations, student life and residence hall living. Additional information can be found on the parents website at: www.bucknell.edu/parents

As a Bucknell parent, you are automatically a member of the Bucknell Parents Association. Through the activities of the Parents Board, the association provides an open line of communication among parents and University administration. The Parents Association also supports the Parents Fund which provides financial support to the operational needs of the university. I invite you to get involved and hope you will join us for **Family Weekend** every year starting with this coming October 1–3.

Please do not hesitate to contact members of the Parents Association Board of Directors listed in the guide, or me directly, with any questions you may have now or in the future. Additionally, you may also refer to the Bucknell website, www.bucknell.edu, for more information. If you need to reach someone in the Family Programs Office, please send an email to: parents@bucknell.edu

I am glad that you are part of our community, and I am confident that your student's years at Bucknell will be rewarding for your entire family.

'Ray Bucknell,

Michael Pepe P'10, '12
President, Board of Directors
Bucknell Parents Association

Table of Contents

Information for Parents

Family Weekend	2
Bison Gatherings	2
Orientation	2

Academic Life

University Calendar	3
Summer Session	3
International Education/Study Abroad	3
Academic Advising	4
The Writing Center	4
Technology, the Library, Media and Telecommunications	5

Student Life

Parent Notification	5
Student Judicial System	5
Sexual Harassment and Sexual Assault	6
Student Resources	6
Athletics and Recreation	7
Student Health	7
Career Development	8
Counseling and Psychological Services	10
Campus Safety	10
International Student Services	11
Students from a Distance	11
Letters and Packages from Home	12
Multicultural Student Services	12
Office of LGBT Awareness	13
Residence Hall Life	13
Residential College Program	15
Living Off Campus	17
Dining Services	18
Religious Services and Activities	19
Campus Activities, Programs, and Leadership Development	20
Women's Resource Center	22
Military Science	23
Fraternity/Sorority Affairs	23
Transportation and Parking Services	24
Student Finances	25

Campus and Community Information

Campus Contacts	27
Tips from Experienced Long Distance Families	29
Shuttle Schedule	30
Parents Association Board of Directors	31



A Guide to the Bucknell Experience

Information for Parents

Family Weekend

Families are especially encouraged to visit the University on several major campus weekends. This gives you the opportunity to see the campus in action, and have fun with other Bucknell families. Mark your calendar for the upcoming Family Weekend on October 1 – 2, 2010. The University plans special activities for families during this weekend. A detailed schedule for the weekend will be posted on the parents' website several weeks in advance. We strongly suggest that you make hotel reservations for Family Weekend now. On busy weekends such as this, the local hotels fill up quickly. You can find hotel information through the Susquehanna Valley Visitors Bureau at 800-574-2523. For more information regarding Family Weekend 2010, please visit www.bucknell.edu/familyweekend.



Bison Gatherings

Bison Gatherings are welcome receptions held in July to provide students in the class of 2014 and their families the opportunity to meet other incoming first-year students, current students, parents, alumni and other members of the Bucknell community. These gatherings are typically held in the homes of Bucknell families and alumni who are there to answer all of your questions and to help you as a new member of the Bucknell family. Don't miss the opportunity to meet members of the incoming 2014 class. To register, please visit www.bucknell.edu/bisongatherings.

Orientation

All new students will report to Bucknell on Friday, August 20, 2010, to begin New Student Orientation. There are a number of special programs for students and parents during the day. These are events well worth attending.

Transfer students are encouraged to participate in New Student Orientation. In addition, there are a number of special events scheduled for transfer students to enable them to meet former transfer students as well as the faculty and staff who can assist them in their transition to Bucknell.

Bucknell's New Student Orientation program provides significant opportunities for students to get better acquainted with the campus, fellow classmates, and with faculty and staff members. Orientation is an intentional combination of programs, activities, and experiences designed to share with new students the values of scholarship and community living, to ease the transition to a new environment, and to open the doors to exploration. The program begins five days prior to the start of classes, and continues in a variety of ways through the early weeks of the semester. Your new student will find much of interest, challenge, and enjoyment during this time.

Questions and concerns about the New Student Orientation program should be directed to Amy Badal, assistant dean of students, 570-577-1638. If you plan to drive your student to Lewisburg and stay over, we suggest that you make hotel reservations as soon as possible.

Academic Life

University Calendar

Bucknell's academic calendar covers the next four years to help faculty, staff, students and their parents plan for beginning and ending semester dates. In addition to semester dates, the calendar reflects the fall, winter, and spring breaks. To access the academic calendar please visit www.bucknell.edu/x6979.xml. University four-year planning calendar: www.bucknell.edu/x1205.xml

Summer Session

Q. What opportunities are available to take classes during the summer?

A. Getting ahead or just staying on track — the Bucknell Summer Session provides opportunities for students to accelerate their degree progress, make up credits, or explore new areas of interest. The six-week Summer Session, which begins in mid-June, is designed to meet the needs of college students from Bucknell and elsewhere, local high school students seeking college credit, and adult learners who wish to enrich their lives by developing new areas of expertise.

The College of Arts and Sciences and the College of Engineering offer summer courses across the curriculum at both introductory and advanced levels. Many departments will arrange independent study or special project courses whether or not such courses are listed. Students who are working toward degrees or certification are advised to consult with their advisers to determine which summer courses most appropriately meet their needs. Summer courses normally meet 1.5 hours Monday through Friday or twice a week for 3.5 hours. Most courses meet in the morning hours, but there are also several afternoon and evening courses to accommodate those with summer jobs. The Summer Session Catalog, which contains course descriptions, meeting times, and registration materials, is available by calling the Summer Session Office at 570-577-3655, or www.bucknell.edu/x1264.xml.

International Education/Study Abroad

Q. How does my student arrange to study off campus during the academic year?

A. Each year roughly 400 students study off-campus, either domestically or overseas. The majority of these students are juniors and first-semester seniors who study off-campus for a semester or a full academic year. Each semester, the Office of International Education (OIE) holds several general advising sessions for sophomores considering off-campus study. These sessions cover basic issues such as academic planning, selecting an appropriate program, and financial matters. Once they have attended one of these sessions, students then set up individual appointments with the appropriate advisor in OIE. Students are also encouraged to meet with their academic adviser(s) and faculty in their intended major(s). In November of each year, OIE hosts an off-campus studies fair, with information available about a wide range of domestic and international study options; at the fair, students have the opportunity to speak with other Bucknellians who have studied off-campus.

All students must submit an application for preliminary approval to study off-campus in early December or early February for fall semester or full-year off-campus study, and in mid-April or early September for spring semester. For approval to study off-campus, students must normally have a cumulative grade point average of 2.8 (certain programs have higher GPA requirements) and a history of good conduct; students must also meet the eligibility requirements of their desired program. The Bucknell application includes a statement of academic purpose, an endorsement of the academic adviser, and recommendations from two faculty members. For more information visit, www.bucknell.edu/internationaleducation.

Academic Advising

Q. Does the University make sure that my student will take the required courses?

A. This is the student's responsibility, but faculty advisers, the academic deans, and the registrar's office will monitor progress.

Q. Are students assigned to specific academic advisers, and if so, are parents advised of progress on a regular basis? May they contact academic advisers directly?

A. Each student is assigned a member of the faculty as his or her academic adviser. Parents may contact advisers to arrange an on-campus appointment; however, it should be noted that the release of information about a student to parents by University personnel requires the prior written consent of the student.

The Registrar's Office issues grade reports to students at the middle and end of each semester. Mid-semester reports include only deficient grades: D, F, and Incomplete. These "indications of possible problems" are not entered on the student's official record.

Q. Does the faculty work closely with students outside of classes in discussions and interviews?

A. Yes, in fact most members of the faculty devote much time to out-of-class contact with students, but the student is expected to take the initiative. Students having difficulty with course work must take the responsibility for approaching the professor.

Q. Whom can I see to inquire about my student's academic progress, or about any other serious concern I may have?

A. For academic concerns, including learning disabilities, one should see the associate dean of the student's College (Engineering or Arts and Sciences); for nonacademic concerns, the contact person is Dan Remley, assistant dean of students (dan.remley@bucknell.edu). Again, the student's prior written consent is required before any information may be released. Without written consent, these individuals can only listen to your concerns.

The Writing Center

Q. Is there a department on campus concerned with enriching students' writing skills?

A. The Writing Center is a place for students to work on their writing — to bring their work in progress and to talk about it with writing consultants. The consultants can help with all stages of the writing process, from developing an idea to revising drafts. They can be a "test audience" for academic writing in all disciplines, for creative writing, such as poetry, as well as for personal writing such as application essays or resumé's. Both inexperienced and experienced undergraduate writers make use of the center, as do graduate students, faculty, and staff.

Students also go to the Writing Center to talk about how to study more effectively, write better essay exams, and prepare for oral presentations. The center also welcomes international students who would like help with English as a second language. For more information, please visit www.bucknell.edu/writingcenter.



Q. Are other kinds of academic tutoring available as well?

A. Yes, the Writing Center provides academic consultants to help students in introductory mathematics, physics, chemistry, and biology. These consultants are available free of charge and will work with individual students throughout the semester, helping them to fill in gaps in their background knowledge and showing them the study techniques necessary for success in mathematics and science.

Technology, the Library, Media and Telecommunications

Library and Information Technology is committed to helping students succeed at Bucknell. Our department supports technology, library, media, telecommunications, and TV services on campus.

Q. Can I buy a computer for my student through Bucknell?

A. Bucknell University has partnered with several computer vendors to provide parents and students the opportunity to buy a laptop that will meet students' needs during their college years. The Bison Laptop program offers special discount pricing as well as expedited support at the Technology Support Desk. In addition, our staff will configure the Windows laptops appropriately for use at Bucknell.

Laptops will be available for order by early summer. Since Bucknell negotiates very competitive prices with vendors, there is no need to wait until the end of the summer for better pricing. You will want to order early to avoid the rush and to allow your student time to get familiar with their laptop before the academic year begins. Information about the laptop purchase program can be found at www.bucknell.edu/bisonlaptop.

Q. Are there computers for students to use on campus?

A. Although most students arrive on campus with their own computer, there are over 350 computers available in the teaching, open access, and lab facilities that students may use. Most of the classrooms and various learning spaces on campus are equipped with technology and are connected to the Internet. The Bertrand Library also provides access to computers for individual or collaborative work and library research.

Student Life

Parent Notification

Q. If my student is failing a class or gets into conduct difficulties, will I be notified?

A. Parents should be aware that federal law — the Family Educational Rights and Privacy Act of 1974 (FERPA), as amended — limits the information concerning students which the University can make available to third parties, including parents, unless the student's consent has been obtained and/or prior arrangements have been made. Although the University is interested in addressing parent concerns regarding student welfare, it must comply with the provisions of the Privacy Act, also known as the Buckley Amendment. Specific guidelines for when student information can be released is available from the Registrar's Office and can be found in the Student Handbook, which is given to all first-year students at enrollment on the Monday prior to the start of classes. For more information on FERPA, www.bucknell.edu/x6935.xml.

Student Judicial System

Q. Who decides what happens when a policy is violated?

A. Generally, alleged student or group misconduct is subject to review and corrective action within the Student Judicial System. Proceedings of the disciplinary system are intended to be

confidential and are considered a part of the University's educational mission. The dean of students oversees the student judicial system and advises students about their rights and obligations as Bucknell students.

Because of restrictions imposed by federal law, University officials are generally not at liberty to divulge confidential matters to parents without the express permission of the student. Parents may not be contacted by the University without student consent, except in certain cases that pertain to alcohol/drug use or in an emergency situation. Judicial outcomes are maintained in student records for five years after graduation and are reported, as appropriate, to other institutions and agencies. For more information, consult the Student Handbook, or www.bucknell.edu/4704.xml.

Sexual Harassment and Sexual Assault

Q. What does Bucknell do about sexual harassment, sexual assault, and stalking?

A. At a time when sexual harassment, sexual assault, and stalking have received national attention, Bucknell has been in the forefront of developing prevention education, policies, and procedures to address these problems within the University community. We believe that faculty, staff, and students have a right to a learning and working environment free from sexual harassment and abuse. Bucknell works to eliminate those problems on campus and enforce sanctions against those who violate its policy. Sexual harassment, according to Bucknell's policy, is the subjection of a person to unwanted verbal or physical sexual attention, repeated unwelcome sexual advances, the coercion of a person into a sexual relationship, or retaliation for the refusal to comply with sexual demands. Sexual harassment also may include a pervasive, offensive environment that interferes with a person's ability to learn or work. Sexual assault, according to Bucknell's policy, is defined as threats of, or deliberate physical contact of a sexual nature that is against another person's will or without consent.

For more information about these issues, please consult the Student Handbook and the Bucknell Guides about Sexual Harassment and Sexual Assault, or www.bucknell.edu/x4703.xml.

Student Resources

Q. What student support services are available to assist students with special concerns?

A. The dean of students and colleagues in various offices counsel and advise students about adjustment to the University, social development, financial concerns, gay/lesbian/bisexual issues, relationships with peers, health matters, and so forth. Parents are urged to encourage students to initiate contact with a staff member at any of the following offices for special concerns: Deans of Students, Housing and Residential Life, Chaplain, Psychological Services, Student Health Services, Multicultural Student Services, Office of LGBT Awareness, and the Women's Resource Center.

Q. What services are available for students with physical, psychological, health, sensory, or learning disabilities?

A. It is important to know that Bucknell is committed to providing students with disabilities a strong support system, but we do not have special classes or a remedial specialist. However, we are committed to ensuring "reasonable accommodations" to all students who are diagnosed with disabilities (Section 504 of the Rehabilitation Act of 1973, and the Americans with Disabilities Act of 1992).

Students with disabilities who have non-academic concerns should contact Daniel Remley, assistant dean of students, director of housing and residential life, at 570-577-1195.

Students with disabilities who have academic concerns should contact either Elaine Hopkins or Robert Midkiff, ADA, College of Arts and Sciences, at 570-577-1301, or Karen Marosi, associate dean, College of Engineering, at 570-577-3705. Recent written documentation of the student's diagnosis must be provided to the associate dean with whom the student is discussing any special needs.

It is the responsibility of students with disabilities to identify themselves to the appropriate associate dean(s), to provide the appropriate documentation, including assessment of their needs, and to discuss the types of accommodation that may be needed. Given the many types, dimensions, and complexities of disabilities, "reasonable accommodations" must be determined on an individual basis and will be worked out with the assistance of the pertinent dean in consultation with the student and faculty members and/or University staff, as needed. In order to provide the most appropriate services, the University reserves the right to review the diagnosis provided and to suggest that a new or updated diagnosis may be needed.

Athletics and Recreation

Q. What kinds of fitness/recreation facilities are available?

A. Bucknell's extensive facilities and wide range of organized athletics and recreational programming entice nearly everyone into some form of physical activity. The Kenneth G. Langone Athletics and Recreation Center is the focal point of much of the athletic and recreation activity, but Christy Mathewson-Memorial Stadium and the Bucknell West fields are also extremely busy throughout much of the school year. For more information, please visit www.bucknell.edu/1696.xml



Q. What sports are offered?

A. Students may participate in athletics at any or all of five levels: intercollegiate, intramural, club, recreational, and personal. For more information, please visit www.bucknell.edu/x119.xml.

Student Health

Q. What if a student becomes ill while at the University?

A. During the academic year, Student Health Service, located on campus at Ziegler Health Center, provides a full range of ambulatory medical services. With a staff of three physicians, five registered nurses, a nurse practitioner for women's health, alcohol and other drug counselor, and a nutritionist, the health service is prepared to deal with most problems the college student may encounter. Physicians maintain regular hours, and a nurse is available from 8 a.m. to 5:30 p.m. weekdays and 10 a.m. to 2 p.m. weekends. The Student Health Service telephone number is 570-577-1401. For more information, please visit www.bucknell.edu/x7026.xml.

Career Development

Q. What role does the Career Development Center have within the University?

A. The Career Development Center (CDC) at Bucknell is a comprehensive career center offering services and programs that are relevant to both undergraduate and graduate students of the University, as well as alumni. For more information, please visit www.bucknell.edu/CDC.

Self Assessment and Counseling: Career decision-making and planning takes time, energy and commitment, because it is a lifelong process, not an event. No single tool will provide all the answers for students. The CDC offers a variety of services to assist students in their career decision-making process throughout their college years and beyond. While certain careers do require specific academic backgrounds, most do not. Thirty-minute counseling and fifteen-minute advising appointments, as well as walk-in hours, are available on a daily basis to offer students assistance in exploring values, skills, and interests. Self assessment tools, such as the Myers Briggs Type Indicator, (personality type) Campbell Interest Skills Survey and Strong Interest Inventory and Pinpoint, (a computerized instrument that combines interests, skills, and values with personality type) are available in the CDC.

Education: CDC staff also will help students create a career action plan that assists them in preparing their job search materials and encourages them to begin exploring and learning about the diverse opportunities available in today's working world. A wide array of educational programs are available for students to learn more about how to search for externships, internships and full-time employment. These programs are offered throughout the fall and spring semesters. Topics include: resume and cover letter writing, and interviewing essentials. In addition, mock interviews and resume critiques are available each day. Internships 101 teaches students how to search for an internship. Offered throughout the year the program teaches students how to find an experience that allows them to learn about themselves, to learn about their fields of study, and to solidify (or rethink) their career interests. BRIDGE 101 sessions teach students how to use our web-based recruiting software program, the BRIDGE, for internship and job searches. JumpStart, a free, non-credit five-session class, is geared toward juniors and sophomores who would like a structured approach to making career decisions, searching for an internship and/or applying to graduate school.

Networking: Once prepared, students are then encouraged to begin connecting with Bucknell employers, alumni, and parents. We offer a variety of off-campus and on-campus networking opportunities. Off-campus events planned each year include an NYC Finance Career Fair, an NYC Communications and Arts Career Fair and a D.C. Career Fair featuring an emphasis on government, nonprofit, international, and public affairs career paths in the spring. Over winter break, we host geographic-based network events in metropolitan areas such as Boston, Chicago, Philadelphia, New York City, San Francisco, Los Angeles, Pittsburgh, and Washington, D.C. On-campus career events involve bringing alumni, parents, and friends of Bucknell to campus to talk about industries of interest to Bucknell students. Past programs have spotlighted nonprofit, law, health, engineering/ technical, social work, publishing, marketing, and science and technology industries. The Bucknell externship program is for sophomore students. It consists of a two-day job shadowing experience within a work place setting during winter break. Externship sponsors are Bucknell alums, parents, employers, and friends of the University who are willing to bring students into their workplaces to observe and gain a better understanding of both what they

do on a daily basis and the culture in which they work. CareerNet, an alumni and parent volunteer database, is available to students and alumni. Bucknellians are able to speak with over 900 volunteers to learn about their career paths and receive valuable advice, tips, and suggestions.

Graduate School, Prelaw and Prehealth Advising: Each year approximately 20-25 percent of the graduating class will pursue an advanced degree immediately upon graduation. The University offers a variety of services to help students with the graduate admissions process. CDC services include access to graduate exam information and prelaw advising.

Graduate schools typically require a standardized exam as part of the admissions process. Each year the MCAT (medical school) and LSAT (law school) exams are offered on campus. Registration booklets are available in the CDC. Registration booklets for the GMAT (MBA schools) and the GRE (arts and sciences programs), both now computerized, are also available. In addition, the CDC hosts an annual Graduate and Professional School Fair on campus in October. The prelaw and prehealth advisers are members of the CDC staff, working closely with students from all academic backgrounds who indicate an interest in pursuing admission to law school, medical school and other health affiliated programs. Scheduled appointments, walk-in hours, and a wide variety of educational programs are offered throughout the academic year.

Employer Relations: Bucknell offers four ways for students to connect formally with employers for both internship and full-time opportunities: recruiting activities, online listings, annual career expos, and off-campus career fairs.

■ Campus and Off-campus Recruiting

Both the Resume Referral and On-Campus Recruiting programs are coordinated via the BRIDGE, Bucknell's web-based recruiting software. Company information, job descriptions, resume and cover letter submissions, and interview schedules are all now streamlined through this software. Students and employers have access to the BRIDGE via a password-protected website. All students are able to participate by reviewing the site on a regular basis and applying to available full-time and internship opportunities during designated weekly deadlines. At the end of that week, the employer has access to all the resumes and cover letters submitted. Employers are able to view the documents online or print hard copies. For on-campus visits, employers then respond online to students indicating whether or not they have been selected for interviews. Selected students then sign up online for interview time slots. For resume referrals, employers follow up directly with the students they wish to consider.

■ Online Listings and Resume Books

The CDC has established a partnership with experience.com to offer students the ability to search full-time and internship opportunities in an easier and faster way – 24 hours a day, seven days a week via the web. This site is password protected so confidentiality is not a concern. A resume bookservice is offered in the spring and summer months. Both services are available via the BRIDGE.

■ On-campus Career Expo

The Employer Expo provides a wonderful opportunity to connect with Bucknell students. Held each September on Bucknell's campus, over 550 students and 100 employers participated in 2008. The 2009 Expo is scheduled for mid-September. This is an exciting way for employers to connect with Bucknell seniors for full-time consideration and juniors and sophomores for internships.

■ Off-campus Career Fairs and Networking Events

Annual off-campus events include an NYC Finance Career Fair each fall, a series of winter break Career Network Nights in cities around the U.S., and NY Communications and Arts Career Fair and D.C. Career Fair featuring an emphasis on government, nonprofit, international, and public affairs career paths in the spring.

Bucknell Public Interest Program: Bucknell Public Interest Program consists of alumni, faculty, and University administrators working together to provide educational opportunities and experiences to students interested in the public interest, non-profit sector. BPIP offers leads on full-time employment for graduating seniors, a summer internship fund for under-class students, and educational workshops and career panels throughout the academic year.

Alumni Career Services: Bucknell offers a career development program for alumni. The intent of the Bucknell Alumni Career Services program is to provide assistance to alumni in the areas of career planning, career transition, and career success. In keeping with the Bucknell philosophy and the CDC mission, the alumni career services program focuses on helping alumni take a proactive approach to developing their careers. It is not intended to be a job listing service or to find someone a job, but instead, to be a resource to alumni in areas such as: learning how to think about career paths, identifying immediate and lifelong career goals, evaluating possible careers, making career transitions, developing job search strategies and materials, succeeding in the interview process, and networking effectively.

Counseling and Psychological Services

Q. What kinds of services are offered by Psychological Services?

A. Psychological Services offers a wide variety of counseling, consulting and personal development services designed to help students grow in self-understanding, to help them use their intellectual and emotional resources as effectively as possible, and to provide a supportive “safety net” when students encounter difficult and painful life circumstances. Psychological Services, or “Psych Services,” as it is commonly called, offers short-term individual and group counseling and psychotherapy as well as assistance with mental health crises, psychiatric consultation, and referral resources for services sought off-campus. In addition, the staff provides workshops, seminars, and support groups. Informational booklets and psychological testing are also available. For more information please visit, www.bucknell.edu/PsychServices.

Campus Safety

Q. Can I be assured that my student is going to be safe on campus?

A. Generally, Bucknell, much like other small, private universities, has been less susceptible to many of the violent crimes more commonly found in urban areas and at larger campuses. Still, the Department of Public Safety operates a 24-hour emergency dispatch center 365 days throughout the year to serve the Bucknell community. Public Safety officers are sworn police officers under Title 22 §501, with full police powers and patrol on and off campus around the clock. Bucknell University complies with Public Law #101-542, the Jeanne Clery Disclosure of Campus Security Policy and Crime Statistics Act. Campus crime statistics and a campus security brochure are available upon request from the Department of Public Safety at 570-577-3333 or on Public Safety’s website www.bucknell.edu/PublicSafety.

International Student Services

Q. What services are offered to International Students?

A. International Student Services is a resource to students from 45 countries, including foreign nationals, dual citizens, U.S. permanent residents, and U.S. citizens who live abroad. The office provides orientation, advising, academic and social support as well as social and other relevant programming and support for student organizations. Immigration Services provides up-to-date information on immigration regulations and practices.

Q. What activities are international students involved in?

A. International students are involved in activities across campus ranging from student government to athletics to community service. If students are interested, there are many cultural organizations that offer students the opportunity to share their home cultures and/or learn about new ones. International and U.S. students come together in these clubs to plan events such as film nights, dinners, speakers, discussion groups, holiday celebrations and trips.

Students from a Distance

Q. Are there special considerations or concerns for my student coming to campus from a great distance?

A. Students who live outside of a five-to-six hour car drive from Lewisburg occasionally experience issues and concerns not usually encountered by those students who live closer to campus. These issues include parental involvement, vacation periods, transportation, storage, and hotel reservations for special weekends.

Q. What do we need to know about University vacation periods and transportation?

A. Official University vacation periods include fall, winter, and spring breaks, as listed online at www.bucknell.edu/x6979.xml. The residence halls are closed for winter break and are open during fall break, Thanksgiving, and spring break, but students usually leave campus for all vacation periods to return home, visit with friends, or travel. In addition, the Dining Service usually closes except for limited hours as posted. The University runs shuttles to local airports, train and bus stations by reservations only. Students who require housing during vacation periods must register online and receive approval from the Office of Housing and Residential Life.

Q. Does the University provide summer storage?

A. There is limited storage space for student use during the summer for those who live outside a six-hour driving time from campus. No space is available for electronic/computer equipment or furniture. Storage is also available through local storage rental companies. Students coming from abroad may want to bring to campus or purchase a laptop computer, rather than a conventional PC in order to minimize difficulties associated with transport and summer storage.

Tips from experienced long distance families

- Make hotel and dinner reservations for weekends you will be in Lewisburg well in advance of when you think you should.
- If you are planning to fly to Bucknell, check out your options into Harrisburg (MDT) as well as Baltimore Washington (BWI). Tip: Southwest and AirTran both fly into BWI, and may not show up on travel search websites. Other airports commonly used by students include Williamsport, Philadelphia, NY area.
- Order the computer through Bucknell; Bucknell then provides support and service on campus for it. Plan to buy the printer once you arrive.

- Please check the www.bucknell.edu website to help begin finding answers to some of your questions. As well as the Parents Tab on the website. Please e-mail parents@bucknell.edu with any questions or comments. Also, watch for the Family Connection electronic newsletter sent via email. Other opportunities to stay informed about campus life, is to subscribe to *The Bucknellian*.
- Tips for packing clothing for the change of seasons... Plan for the summer to winter clothing switch: pack all of your lighter weight clothes in plastic bins with prepared shipping labels to send them back home. Also pack all of your winter clothing in bins before you move to Bucknell. Parents can then send the clothes as the weather changes, and then your students are ready to ship lighter weight clothes home.
- Don't miss the Drop Off and Dine Dinner on August 20, 2010, after you "drop" your student off.
- Don't forget during fall break most students will be leaving campus. Make the travel plans now, or determine if your student can stay in the dorms during this time.
- Contact the transportation office regarding airport shuttles for travel arrangements for fall break, Thanksgiving, and holiday break. Consult the housing calendar to see when students must vacate their rooms.
- Check with professors and your final exam schedules about classes scheduled before breaks, if that 3 p.m. class won't meet, you can book an earlier flight.

Letters and Packages from Home

Q. Is there a post office on campus?

A. Yes, a United States Post Office sub-station is located on the ground floor of Marts Hall. Stamps, money orders, express mail, certified mail, registered mail, etc., are available at this location.

Q. When can we send large packages to Bucknell?

A. Larger packages can arrive anytime after Monday, August 10, 2009.

Q. How does U.S. mail, including large packages and Expresses, get delivered to students?

A. Mail is delivered to the student mailroom located on the ground floor of the Elaine Langone Center. All mail should be addressed as follows:
 Student's full name (first and last)
 Bucknell University
 701 Moore Ave., C-#### (Number assigned at a later date)
 Lewisburg, PA 17837

The -#### (number) that your student will receive in a letter later this summer is a very important part of the address, as is the "C" that precedes it. The C and the 4-digit number assure proper sorting and delivery through the U.S. Postal Service. Please do not use residence hall names or room numbers. The 4-digit number that follows the "C" is your student's assigned mailbox number for their time at Bucknell.

If you have any questions, please contact Student Mail Services at 570-577-3256.

Multicultural Student Services

Q. What does the University do to stimulate multi cultural awareness?

A. The office's mission is to assist the institution in creating and maintaining a campus climate that recognizes, appreciates, celebrates, and shares a mutual understanding and respect for all cultures. Multicultural Student Services sponsors and co-sponsors educational and cultural

programs to promote awareness and provide opportunities for positive cross-cultural interactions. For more information, please visit www.bucknell.edu/x5941.xml.

Q. What support services and opportunities does the University offer to students from historically underrepresented populations?

A. As an integral part of the University community, the Office of Multicultural Student Services (MSS) provides advocacy and mentorship for students from historically underrepresented populations in achieving educational and extracurricular goals. These services and programs are designed to promote the intellectual, social, civic, personal, moral and career development of these students. MSS works closely with a variety of offices and departments on campus. Some of these include but are not limited to: the Career Development Center, Writing Center, Academic Deans Offices, Psychological Services and other Diversity offices. With more than 20 multicultural student organizations on campus, students will have the opportunity to work cooperatively with others, gain a deeper understanding of one's own identity and culture, and develop awareness of cultural differences.

Office of LGBT Awareness

Q. My student is gay. Are there programs, activities, clubs, and support for students so they won't feel isolated and/or unsafe?

A. The Office of LGBT Awareness is responsible for creating campus awareness regarding gay/lesbian/bisexual and transgender issues. It is important that all students have the opportunity to pursue their educational endeavors in a safe and secure environment. The office was established over 12 years ago as a result of student activism and efforts. Bucknell is one of fewer than 100 colleges and universities that have a paid LGBT professional staff member and office dedicated to LGBT issues.

The Office of LGBT Awareness offers peer education, cultural programs, Third Tuesday LGBT Film Series, and timely forums to increase the awareness of issues faced by LGBT persons. The office's programming efforts are determined by an advisory board of faculty, staff, and students working together to create an atmosphere of understanding between all segments of the community. On an annual basis, the office compiles the National Coming Out Day Support List, and celebrates National Freedom to Marry Day and Jeans Day.

The office is also home to the student group, Friends of Lesbians/Gays & Bisexuals/Transgressors, which is funded by the Bucknell Student Government. In addition, the office has a large resource library of books and videos available for check out and a lounge where LGBT students and allies come together to relax and discuss LGBT issues and current events. The office provides peer education programs to residence hall groups, sorority and fraternity chapters, athletic teams, and classes. These programs are designed and presented by LGBT students and their allies to small groups during the academic year as an additional way to educate and generate dialogue about LGBT issues facing students on college campuses today. For more information, please visit www.bucknell.edu/lgbt.xml.

Residence Hall Life

Q. What does the University do when damage occurs in residence halls?

A. Bucknell is a residential academic community. As such, every member of the community bears responsibility not only for his or her own conduct but also, to some degree, for the conduct and welfare of the community as a whole. Among other things, what this means for students who live in a residence facility is that they, like all students, are obligated to uphold



the expectations outlined in the Pledge of Student Responsibility and detailed in the Student Code of Conduct. Moreover, they are expected to exert a positive influence on the activities and life of the unit in which they live and take responsibility for what occurs there.

Damage or loss in public areas of campus residence facilities often diminishes the quality of life for, and is understandably and unnecessarily

annoying or frustrating to, the people who live there. Across the University, the costs of repairing damage or replacing lost items can be — and have been — considerable. According to the terms of the Residence Hall Contract, these costs are, wherever possible, assigned to the individuals responsible. But when the perpetrators do not come forward to assume responsibility or are not reported by others who know their identities, the charges must be assigned equally among all the residents of that facility (or the appropriate part of it — the floor, the wing, the area, etc.).

When pro-rated among all the residents of that facility, or part of the facility, those charges are often small. However, the reason they are assigned in this manner is to express the common responsibility that all residents share for the facility and the quality of life within it, and to encourage all residents to exert the fullest measure of influence they can to put that accountability into practice.

Assigning these charges in any other manner would be inequitable to the broader student community. This policy has long worked to help prepare students for responsible and engaged citizenship and has, over time, significantly reduced the costs to the University and individual students. Students are individually notified of the amount and reason for such charges, which are periodically posted to their university bills. For more information, please visit www.bucknell.edu/x2470.xml.

Q. Are substance-free living options available?

A. Yes. Bucknell's substance-free living option is called CHOICE (Choosing Healthy Options In Community Environments). The CHOICE program provides an interactive living-learning environment centered on a theme of personal and community health and wellbeing. An integral part of this theme is the commitment to maintaining a substance-free living space and creating an atmosphere of mutual respect for individual lifestyle choices.

Q. What procedure is followed in matching roommates?

A. First-year students are matched with roommates on the basis of information they provide in a questionnaire completed during the summer. Assignments are made by the staff of the Office of Housing and Residential Life. Each first-year student is advised in mid July of the name and address of his or her roommate and Resident Assistant. It is vital that the completed "roommate questionnaire" truly reflects the student's lifestyle.

Q. May a student move out of the residence hall at the conclusion of the first semester?

A. No. Students assigned a residence hall space are required to live in residence for the entire

academic year unless they participate in an off-campus study program, graduate, or academically withdraw during the second semester.

Q. Are there curfew rules or limitations on visitation?

A. There are no curfew rules. Moreover, because all first-year student residence halls are assigned as coed facilities, there are no limitations on visitation. Thus, students are expected to exercise good judgment and be responsible for determining their own hours.

Q. What furniture and furnishings are supplied in residence hall rooms? What must students furnish for themselves?

A. Each student is provided with a bed, mattress, desk, chair, dresser, and wardrobe. Students provide pillow, mattress pad, telephone, rugs (most rooms are carpeted; information is sent to first-year students with room assignments indicating whether their room is carpeted), lamps, a desk lamp, a wastepaper basket, curtain rods and drapes, clothes hangers, clocks, bedspread, sheets, blanket, and towels. Many students find it preferable to wait until their arrival in Lewisburg to select furnishings such as bedspreads and draperies so that they may decide on these items with roommates. Students may bring their own refrigerator, provided it has a capacity of 4.5 cubic feet or less, and their own microwave oven, provided it draws not more than 750W. "Microfridge" units (combination microwave and refrigerator) are available for direct rental or purchase from Campus Specialties Inc. Information regarding this rental/purchase program is sent to all students during the summer or you may call Campus Specialties Inc. at 1-800-525-7307.

Q. What security and safety procedures are in effect in residence halls?

A. All facilities with the exception of the Mods, have electronic card access. Resident Assistants are on duty nightly and student security patrol all external residence hall areas on a regular basis throughout the night and are in radio contact with the professional Public Safety officers.

Bucknell takes its responsibility to ensure the safety of its resident students very seriously. Therefore, possession of any candles, incense, or halogen torchiere lamps with or without grid, is prohibited (candles for religious or ceremonial celebrations are permitted with advanced approval from the Resident Assistant). This prohibition pertains regardless of the size, wick length, source, shape, or sentimental value of the candle in question. When candles are discovered, they are confiscated. Charges are automatic and sanctions are uniform and applied regardless of circumstances. Battery-operated flashlights are appropriate for emergency lighting in the event of power outage.

Q. Should students carry personal property insurance to cover loss, theft, fire, or other damage to personal property?

A. Yes. A personal property insurance plan is available for resident students for a nominal fee. Information about this coverage is sent to incoming first-year students at their home. A family homeowner's policy may provide coverage for a student. It is recommended that you ask your agent if your student's personal property is covered under your homeowner's policy (and do inquire about deductibles and exclusions). The University does not have insurance to cover student loss due to theft, fire, or other damage to personal property.

Residential College Program

Q. What is a Residential College?

A. The Residential Colleges are an opportunity for students to become part of a dynamic community that integrates and celebrates all aspects of campus life. Members have three

things in common: an interest in a theme, a course designed to bring issues of the theme to life, and a residential hall floor. In this way, college members discover the richness of university life as each Residential College grows into a community of many friends who know the meaning of learning from living. For more information, please visit www.bucknell.edu/x1662.xml

Q. Why would incoming first-year students want to join a Residential College?

A. Each of the seven colleges — Arts, Environmental, Global, Humanities, Languages and Cultures, Social Justice, and Society and Technology — promotes a variety of activities that enhance the first-year experience at Bucknell. Joining a residential college also helps to connect students to upperclass students, faculty, and staff. As a residential college member, students have both a Resident Assistant and a Junior Fellow on their hall who plan events and serve as resource people, mentors, and friends. The Resident Fellows serve as a link to upperclass students who maintain an interest in continuing participation in the colleges. Students in the colleges also interact closely with faculty members called Senior Fellows. These professors teach the college courses and serve as the student's first academic adviser, plan the activities with the students, and help each student make a smooth transition to life at Bucknell.

Q. Is the Residential College Program a four-year program?

A. The Residential College Program indicates a one-year commitment. Involvement beyond the first year is not required; however, there are opportunities for students in the Residential Colleges to continue living and learning in a Residential College community as sophomores.

Q. What is the Humanistic Scholars Program?

A. The Humanistic Scholars Program is an extension of the Humanities College, and offers the opportunity for Bucknell students to do sustained work in the humanities in a campus environment that is supportive of high achievement. Small classes and close contact with faculty are among the many attractive features of the program. Students in any major or degree program are welcome to participate. This program requires the completion of two additional courses (HUMN 150 and HUMN 250) AFTER HUMN 098 and a senior or honor thesis in the subject of the student's major in the senior year. Students also have to pass an oral comprehensive examination after the completion of HUMN 098 and HUMN 150. Upon successful completion of the program, students' achievement is noted on their transcript.

Q. What kind of a time commitment is this?

A. Any involvement beyond the classroom requirements is optional. You can choose to be involved at whatever level is comfortable for you. Classroom requirements vary from college to college; however, every college offers a "Common Hour" experience one night a week. During "Common Hour" students explore the theme of their college in different ways such as through interactive workshops, discussions, and guest speakers.

Keep in mind the Residential Colleges can actually facilitate a smooth transition to college life by providing residents the chance to share in common learning experiences. If you are working on a class project, you can walk next door and talk to someone else in your class about your project. Also, with additional support from Junior Fellows and Senior Fellows, students quickly become acclimated to Bucknell.

Q. Are Residential College halls different from other residence halls?

A. All residence halls have Resident Assistants who help guide students and plan events. The

Residential Colleges supplement these components. Junior Fellows are upperclass students who have previous Residential College experience. They help keep the theme of the colleges alive on the halls and serve as important resource persons for the course, the college, and Bucknell in general. The Residential Colleges are designed to enrich the traditional university experience.

Q. Will students become isolated by joining a Residential College?

A. No. The colleges promote relationships with fellow classmates, upperclass students, faculty, and staff. Individually, Residential College members are not only involved in college activities, but also pursue other outside interests. College members are active in athletics, social organizations, academic clubs, volunteer organizations, campus jobs, political organizations, musical ensembles, etc.

Living Off Campus

Q. Are students permitted to live off campus in Lewisburg?

A. Bucknell is a residential campus and students are required to live on campus. Off-campus living is regarded as a privilege and all undergraduates (except those who commute from the primary family home) must secure special permission to live off campus. The University annually determines the number of students who may live off campus. In recent years, that number has been between 365 and 400 students. Beginning Fall '09 (the class of 2013), that number will be reduced to 200 students and will be available only to members of the senior class. Students SHOULD NOT sign a lease for an off-campus rental prior to receiving written approval to live off campus. Students believe they must sign as much as two years in advance to get a "desirable house" and when they are not approved, or fail to apply to live off campus, must pay for housing on and off campus. Parents should NEVER provide payment toward a lease without checking for WRITTEN confirmation of approval to live off campus.

Purchasing a house for a Bucknell student DOES NOT automatically give approval and does not imply "residency" in any way. A house owned by parents and/or a student will not make a student eligible to live off campus and the student must follow the application to live off campus process to be released from the on-campus residential living requirement. For more information, please visit www.bucknell.edu/x45286.xml

Q. What is the process to receive approval to live off campus?

A. Each student interested in living off campus for the first time is required to attend one of several Off Campus Living Presentations. Topics discussed include the approval procedure, behavioral standards, legal obligations, and rental processes. A student is given an Application to Live Off Campus at the end of the presentation and instructions regarding completion of the approval pieces. A student who lives off campus one year is required to re-apply for approval, but does not have to attend the Off Campus Living Presentation.

Q. What if my student joins a fraternity or sorority; may they still live off campus?

A. Yes. However, to make sure that fraternities/sororities fill chapter houses — in keeping with their responsibilities — members of Greek organizations will not receive approval to live off campus until house rosters for the upcoming year are approved in March, and applicants are not included on the house or alternate list.

Q. May my student live on campus one semester and off the next?

A. A student who is a resident of a University-owned or related facility (residence hall, the mods, Bucknell West, Gateways, Hunt Hall or University-owned fraternity) for the fall

semester will not receive approval to move off campus for the spring semester of that same academic year even if the student has signed a lease for an off campus house or apartment. A resident student is further defined as an individual who will continue to take classes on the campus during the second semester.

Q. Does Bucknell inspect off campus properties rented by students?

A. No. Bucknell does not inspect non University-owned off campus rental properties and therefore cannot ascertain whether such facilities are safe, sanitary, and in compliance with local ordinances. However, representatives from the Bucknell Student Government, the Bucknell Parents Board, and University officials have developed and disseminated a facilities safety checklist (www.bucknell.edu/x45288.xml) for students approved to live off campus and their parents. It is crucial that every student meet with the landlord to complete the safety checklist before signing a rental agreement. Alternatively, the checklist should be completed and deficiencies addressed before the student moves in for the fall semester.

Dining Services

Bucknell’s commitment to student centered and distinctive dining in 2010 continues to offer great menu variety, dining plans that fit any student’s needs, special events and daily offerings aimed at enhancing the social and dining experience of Bucknell students.

We continue to offer Full Service “anytime access” Silver, Gold and Platinum meal plans for use in the Bostwick Dining Room Marketplace. All of these plans allow unlimited access to Bostwick and a ‘take out’ meal option in lieu of dining in. These three plans each come with an amount of declining dollars that may be used at Bucknell Dining’s retail locations such as the Bison Food Court, Bertrand Library Café and 7th Street Café.

While Bucknell Dining’s retail operations respond to students wants and needs with an evolving list of offerings and special meal options, the resident dining program (anytime access) offers Wednesday night specials and a schedule of chef focused educational and culinary based stations. Both focus on fresh and innovative offerings as the norm. From sushi to comfort food such as macaroni and cheese or meatloaf we strive to respond to student’s requests. Questions regarding menus, ingredients and dietary concerns may be directed to dining@bucknell.edu or 570-577-1240. For more information, please visit www.bucknell.edu/dining.xml.

Bucknell Dining Policies

- Every student residing on campus is required to purchase a meal plan each semester.
- First-year students are required to select either the Platinum, Gold, or Silver Meal Plan. If no meal plan is selected, or if you try to select some other meal plan, the student will be automatically registered for the Silver Meal Plan.
- Upperclass resident students may select from the Bucknell Dining meal plan options.
- Off-campus non-resident students may select any meal plan but are not required to purchase a University meal plan.
- Declining dollars carry over from semester to semester and year to year, but they become invalid upon graduation or separation from the University. Additional declining dollars can be purchased at any time at three convenient campus locations — the Bucknell Dining Office, the Bison, or the Finance Office.
- Declining dollars are not refundable or transferable.

If you have questions regarding meal plan policies, please contact Accounts Receivable at acctrec@bucknell.edu or 570-577-3733.

Religious Services and Activities

Q. What religious services and organizations are available for students?

A. Bucknell offers a variety of religious programs and opportunities through which students are encouraged to integrate their religious traditions and personal spirituality with their academic and social lives on campus. Students of all religious traditions are encouraged to make their religious life a part of their Bucknell experience, and the University is committed to assisting them.

The Office of the Chaplains and Religious Life (OCRL) coordinates religious and spiritual life for the University. Parents are encouraged to contact the office if you have questions about counseling, religious groups, worship services, special events, service projects, or local resources for any religious group. Visit the Chaplain’s Office website at www.bucknell.edu/Chaplain, where a great deal of information is posted for you, including lists of student religious groups, local places of worship, and more.

Newman House (610 St. George Street) is “a home away from home” for Bucknell’s Catholic student community, Catholic Campus Ministry (CCM). CCM offers a wide variety of activities open to all Bucknell students, including Thursday Night Dinners and Soul Smorgasbord — a post-dinner discussion group focusing on contemporary faith issues; daily Masses; retreats; prayer groups; social activities and community service projects. Masses on Holy Days and Holy Week services are offered on campus. Weekend Masses are celebrated at 4:30 p.m. on Saturday, and 4 p.m. and 10 p.m. on Sunday. The Sacrament of Reconciliation is available on weekends or by appointment. For more information call CCM at 570-577-3766 or visit the CCM website at www.orgs.bucknell.edu/ccm.

Bucknell Hillel provides for Jewish life on campus. Jewish students work with Rabbi Serena Fujita, the Jewish Chaplain, to plan a variety of religious, holiday, cultural, educational, and social programs, as well as community service projects that all Bucknell students may attend. Weekly Shabbat services are on Friday at 5:30 p.m. followed by a student-prepared dinner. Hillel is based at the Berelson Center for Jewish Life (632 St. George Street), which has lounges, worship space, a library, the rabbi’s office, and both kosher and non-kosher kitchens. Rabbi Fujita may be reached at 570-577-2273 or sfujita@bucknell.edu. For more information check the website at www.orgs.bucknell.edu/hillel.

Chaplain Thomasina Yuille leads the on-campus interdenominational protestant church. We host a weekly worship service on Sundays at 11 a.m., featuring the Rooke Chapel Choir and Rooke Chapel Ringers. Other activities include social events, retreats, service projects and trips, study groups, and holiday services. The Protestant Campus Ministry House at 628 St. George Street is open to students. For more information, go to the RCC website at www.orgs.bucknell.edu/rcc.

Students also have organized other religious groups on campus, including DiscipleMakers Christian Fellowship, The Gathering, InterVarsity Christian Fellowship, Latter-Day Saints Student Association, Muslim Students Association, Orthodox Christian Fellowship, Voices of Praise Gospel Choir, and Young Life.

The Office of the Chaplains and Religious Life coordinates the work of all the religious groups on campus and seeks to promote understanding, acceptance and communication.

All services are in concurrence with the academic calendar:

- Jewish Shabbat Service and Dinner, Fridays, beginning at 5:30 p.m. in the Berelson Center for Jewish Life, 632 St. George Street.
- Roman Catholic Masses: Saturdays, 4:30 p.m., Rooke Chapel; Sundays, 4 p.m., Rooke Chapel; Sundays, 10 p.m., Hunt Hall Formal; Sacrament of Reconciliation before Masses.
- Protestant Worship, Sundays, 11 a.m., Rooke Chapel.

Campus Activities, Programs, and Leadership Development

Q. Should students get involved in co-curricular activities during their first year on campus?

A. Absolutely, although during their first year, students' first priorities are to manage academic responsibilities and personal wellness; when they feel ready, participation in co-curricular activities is strongly encouraged. Involvement in activities outside the classroom is essential to students' well-rounded growth and development in college and will result in strong friendships and the attainment of life skills.

Q. How can students get involved in student organizations and activities?

A. Nearly 150 student campus clubs and organizations exist to serve the broad range of student interests at Bucknell. They include governance, media/publications, ethnic and religious, living/residential, social, academic honoraries, and community service organizations as well as fraternities and sororities. Student organizations are anxious to involve new students in becoming members. "Activities Unlimited," an activities and involvement information fair, is held at the beginning of the fall semester. Student organizations have information booths set up to introduce students to their groups and activities, and to help new students find their niche at Bucknell.

The Office of Campus Activities and Programs (CAP Center), located in Room 306 of the Elaine Langone Center, is the place where students can go to get information about student organizations and activities and ways to get involved. Throughout the year, organizations will post notices on campus and in What's Happening, a weekly online newsletter, announcing their meetings, programs, and opportunities for involvement. For more information, please visit www.bucknell.edu/x2341.xml.

Q. What leadership opportunities are available for students?

A. Many student organizations and campus departments provide students with leadership opportunities. Leadership Bucknell, coordinated through the Office of the Dean of Students, offers a variety of leadership development experiences for students including an emerging leaders program for first-year students; Camp Leadership, a community service leadership initiative facilitated by Bucknell students and offered for local youth; Omicron Delta Kappa, a leadership honorary organization; the Student Leadership Institute, a half-day annual student leadership conference, and a student leadership awards ceremony. In addition, the Bucknell Student Government (BSG) holds campus-wide elections for positions in its Congress, committees, and executive offices. The Campus Activities and Programs Center also sponsors a variety of training and development opportunities for students. Building on Foundations (BOF) is one of Bucknell's premiere pre-orientation programs, going strong since 1938. If you want to get in the know on all things Bucknell or if you are looking to get on the fast track to success on campus, this is the program you've been looking for. BOF is designed to offer you community service opportunities, leadership skills, team building, strong friendships, and personal growth that will impact you for years to come. The BOF Counselors are all veterans of the previous year's programs and represent a wide range of social, religious, athletic, political, and service groups on campus.

BOF is held at the University's Brown Conference Center at Cowan, a 40-acre wooded area with accommodations, kitchen, and state-of-the-art rock climbing wall, and is located only nine miles from campus. If you want to be a leader and make a difference on campus — and make 60 great friends before the year even starts — this is one experience you can't miss. For more information, please visit www.bucknell.edu/x2558.xml.

Q. What kinds of social activities are there for students?

A. The Office of Campus Activities and Programs (CAP Center) offers a myriad of social activities including major concerts (Dave Matthews, Jason Mraz, O.A.R., 311, Kanye West, the Goo Goo Dolls, T-PAIN, Third Eye Blind and most recently Jay Sean and Kid Cudi), major lectures (James Earl Jones, Janet Reno, Mitch Albom, Chris Matthews, Bill Nye, and, most recently, the Mythbusters), comedians, coffeehouse performers, trips, films, and special events (Texas Hold 'em Tournaments, a capella groups, hypnotists, and the ever-popular bingo). Activities and Campus Events (ACE), is the primary group responsible for programming the campus's social life. ACE, open to the entire campus, always welcomes new students' involvement in the selection and planning of events. One of Bucknell's popular spots is the 7th Street Café. The Café provides a relaxed atmosphere with specialty hot and cold beverages and snacks. Free acoustic performances are held Friday nights from 10 p.m. to 12 a.m.. In addition, throughout the year, special Student Open Mic Nights are held so that students can showcase their own talents. (This venue also is home to the Craft Center which offers many classes and workshops.) Uptown is a state-of-the-art nightclub featuring DJs, popular Bucknell student bands, trivia nights, video game tournaments, and well-known bands, including Dispatch, Good Charlotte, O.A.R., Howie Day, Simple Plan, Maroon 5, Sum 41, Fall Out Boy, Ataris, Stephen Kellogg, and most recently Plain White T's and Mae. Uptown is a great hangout spot for musical entertainment, shooting pool, and playing foosball. Located in the basement of Swartz Residence Hall, Uptown is open Friday and Saturday nights from 9:30 p.m. until 2 a.m. and is available Monday – Thursday for rentals by student organizations.

Two new and exciting programs include Fall Fest and Homecoming Extravaganza. Fall Fest is an outdoor event held each year on Sojka Lawn in September to celebrate the beginning of the fall semester. Students, faculty and staff come together for a day full of entertainment including awesome bands, fun inflatables and great food! Students enjoy carnival booths run by student organizations, throw frisbees on the lawn and spread blankets to sit and listen to great live music. Previous artists at Fall Fest have included hello goodbye, Jack's Mannequin, and Josh Kelly. Along with these well-known artists, Bucknell student bands are invited to play throughout the day.

Homecoming Extravaganza occurs every year on the Friday evening of Homecoming weekend. It is a free, fun-filled night of entertainment to bring together students, faculty, staff and alumni to kick off a myriad of festivities for the entire weekend! The night begins with entertainment from student a capella groups and comedy improv while attendees mingle on the lawn enjoying hot chocolate, bread bowl soup, and s'more making over outdoor fires! The evening is headlined by a nationally renowned comedian performing for the Bucknell community. Past comedians have included Colin Quinn, Lewis Black and most recently Jim Gaffigan.

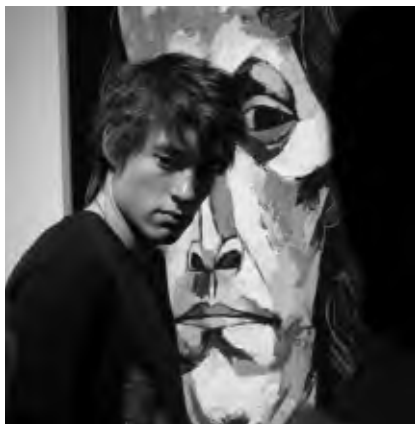
Q. How can we find out about events held at the Weis Center?

A. Weis Center Performance Series events are announced in the spring for the following academic year and a mailing is sent to the campus at that time; the complete season brochure is distributed to everyone on campus in the fall. Both contain ticket order forms. Interested friends and relatives can visit the Weis Center web page at www.bucknell.edu/WeisCenter, or call the Weis Center at 570-577-3700 to be added to the mailing list for the brochure. Most events held in the Weis Center are announced in Bucknell's published calendars of events, which can be procured from the Office of Communications (570-577-3260).

Q. Are there art exhibitions at Bucknell?

A. Yes. The Samek Art Gallery (Elaine Langone Center third floor) organizes many thematic group and in-depth solo exhibitions of contemporary art, historic exhibitions, and exhibitions focusing on the permanent collection. Noted contemporary American, Chinese, German, and Swedish artists have been featured in the last few years. Many exhibitions have premiered at Bucknell, then traveled around the U.S.

The over 5,200-object permanent collection includes the Samuel H. Kress Study Collection of Renaissance painting and sculpture, the Andrew Sardoni Collection of Japanese decorative art, and strengths in historic prints (Goya, Picasso, Rembrandt), 20th-century photographs, and historic and contemporary art, and much more. Works from the permanent collection are exhibited on a rotating basis. For more information, please visit www.bucknell.edu/samek.



Q. What opportunities are available for students to participate in Samek Art Gallery activities?

A. Students have the opportunity to exhibit their work in an annual student show each spring. Students enrolled in museum classes and who work at the gallery may help install temporary exhibitions and help organize collection exhibitions, in addition to viewing the work of professional artists. Many visiting artist and scholar lectures, performances, screenings and receptions are presented each year. Student groups are encouraged to contact gallery staff to inquire about scheduling a cultural or social event in the gallery. Gallery events are free. 570-577-3792.

Gallery hours:

Monday – Friday, 11 a.m. – 5 p.m.; Thursday, 11 a.m. – 8 p.m.;
Saturday and Sunday, 1 – 5 p.m. Closed University holidays and breaks.

Women's Resource Center

Q. What co-curricular activities, programs, and services address women's issues and concerns?

A. The Women's Resource Center offers a variety of programs and services to the Bucknell community. It provides education about gender and its implications, advocates for equity on campus and in the community, celebrates the contributions of women to society and culture, and empowers students to reach their full potential in a world where gender categories have enduring influence. The Women's Resource Center offers film screenings, guest speakers, peer education programs, and other events. It also provides referral to local resources on issues such as sexual assault and sexual harassment. The Women's Resource Center collaborates with other offices and student groups to provide education on violence against women, body image, and other issues of concern to women. For more information, please visit www.bucknell.edu/wrc.xml.

Military Science

Q. What is ROTC and what are the benefits of participation?

A. The Military Science Department provides leadership training and development programs to students enrolled in the Reserve Officer Training Corps (ROTC). Participation prepares young men and women for leadership and service to country. Students meet for weekly lectures (one to three hours); participate in monthly leadership practical exercises (four to eight hours); and participate in one field training exercise (weekend). Additionally, students are encouraged to participate in the ROTC physical fitness program. Students may volunteer to participate as a member of the Bucknell Color Guard and/or participate as a member of the Bucknell Ranger Squad. First- and second-year students may enroll and participate in Army ROTC without commitment or service obligation. Eligible students desiring a commission as a second lieutenant must sign a contractual agreement prior to the start of their junior year. Additionally, Bucknell students may apply for Army ROTC scholarships. The Army awards scholarships based on merit. These scholarships cover full tuition, provide \$1,200 for books, and provide a monthly stipend ranging from \$300 – \$500. For further information, contact Major Christopher Griffiths and Mrs. Barb Carl at 570-577-1246/1013 or armyrotc@bucknell.edu.



Fraternity/Sorority Affairs

Q. What part does sorority and fraternity life play on campus?

A. Approximately 55 percent of sophomores, juniors, and seniors are members of the fraternity and sorority system at Bucknell (first-year students are not permitted to join). Although fraternity and sorority organization membership is popular at the University, there are many other social outlets for students such as clubs, organizations, and athletic teams. For more information, please visit www.bucknell.edu/x13292.xml.

Q. What responsibility does fraternity and sorority organization membership entail?

A. The importance of membership in such an organization can be determined only by the individual; however, there are certain housing, financial, and behavioral obligations and expectations of fraternity and sorority membership. When an individual joins a fraternity and sorority organization, they accept a level of responsibility for the organization and its actions. Therefore, all members of the organization are held responsible and accountable for the actions and behaviors of the organization. This is true at all times, both on and off campus, regardless of the individual member's level of participation and/or involvement in the activity.

Q. When do sororities and fraternities conduct their official membership recruitment periods?

A. Formal recruitment is conducted at the beginning of the fall semester for upperclass (non-first-year) students. Scheduling recruitment during the sophomore year promotes successful establishment of appropriate academic priorities, and of ongoing relationships with other first-year students within the residential units. Information about the fraternity and sorority

system is provided throughout the student's first year and mailings will be received at home the summer prior to sophomore year to prepare students for their participation in the recruitment process.

Q. Are members of fraternities and sororities required to live on campus?

- A.** Fraternities with chapter houses and sororities with suites in Hunt Hall are required to fill their facilities to capacity before members are permitted to live elsewhere on or off campus. Fraternities may encourage their members to eat all meals at the chapter house, if the organization offers a meal plan, regardless of where the member lives.

Transportation and Parking Services

Q. What air, rail, bus, and taxi transportation is available to and from Bucknell?

- A.** Lewisburg is accessible by means of the Trailways bus line. The bus stop is near Market Street Deli. The phone number is 570-524-7776. Information about bus schedules can be obtained by calling the Susquehanna Trailways terminal in Williamsport at 1-800-692-6314. Lewisburg is not served by passenger trains. The closest railroad station is in Harrisburg, 70–75 miles south of Lewisburg. The phone number for Amtrak information at the Harrisburg train station is 800-872-7245. The closest airport to Lewisburg (32 miles north) is the Williamsport Regional County Airport at Montoursville (570-368-2417), which is served by the USAirways/Allegheny Commuter System. Hertz, National, and Avis car rentals are available at the airport, but advance reservations are strongly recommended. The Harrisburg International Airport (717-948-3900 or www.flyhia.com/home) is located 72 miles south of Lewisburg and is serviced by Air Canada (888-247-2262), AirTran Airways (800-247-8726), Continental (800-525-0280), Delta (800-221-1212), United (800-241-6522), and US Airways (800-428-4322).

Special arrangements can be made for airport or other long-distance transportation in addition to the University's airport shuttle service at Break times through Susquehanna Valley Limo Service (800-685-5567). Local taxi service is also available.

Q. Are any special transportation arrangements available at holiday and vacation periods?

- A.** Yes. Many students who have vehicles take student passengers if they live nearby or "on the way." There is a ride board (www.bucknell.edu/CAP), located in the Elaine Langone Center, on which students may sign up for or offer rides. This service is useful for many students. Shuttle service (reservation required) will be available to the Williamsport or Harrisburg airports and Harrisburg train and bus stations whenever there is a break in the academic schedule and at the beginning and end of each semester. The cost for a ride to or from Harrisburg and Williamsport is \$25 one way. Also to Philadelphia (\$50), and JFK (\$60 — only at end/beginning of semesters). Payment will reserve a seat and space for one suitcase and one carry-on bag per person. Additional luggage may be permitted if arranged for in advance for an additional \$10. There will be no refund or credit given unless weather or other conditions cause cancellation of the shuttle. RESERVATIONS ARE REQUIRED (deadlines vary — see schedules). Reservations can be made on-line (www.bucknell.edu/RICS) under "RICS," then "transportation." Students also may reserve a seat by making payment at Transportation Services, 265 ELC, Monday – Friday, 8:30 a.m. – 4:30 p.m. Shuttles will be canceled if there are no reservations. THE SHUTTLES WILL NOT WAIT FOR DELAYED FLIGHTS. If a student misses a shuttle, s/he may call the University switchboard for information on the next available shuttle.

The University is not responsible for airline schedules and changes. The University reserves the right to make adjustments in the shuttle schedule to ensure the safety of

students due to road conditions and inclement weather. Contact RICS, 265 Elaine Langone Center (570-577-3785) for more information.

Q. May first-year students bring automobiles to Lewisburg and use them on the college campus or in town?

- A.** No. Along with many other colleges and universities, Bucknell does not permit first-year students to bring vehicles to Bucknell or Lewisburg. Besides not having sufficient parking spaces on campus or in town to accommodate these additional vehicles, the University encourages first-year students to focus on the Bucknell experience without distractions. The Department of Public Safety monitors all vehicles on campus and in Lewisburg. First-year students who have unauthorized vehicles on campus or in the area will be fined, lose vehicle privileges in their sophomore year, and must remove the vehicle from the area immediately. First-year students are mailed the full text of this policy, which also appears in the Student Handbook. This policy is strictly enforced.

Q. Are there any specific parking regulations on campus?

- A.** All vehicles, whether faculty, staff, students, or visitors, must be registered with Public Safety, display an appropriate parking permit, and are subject to campus parking regulations and the State motor vehicle code. All parking on campus is designated by parking lot and permit only. All parking lots are posted. Visitors are required to use designated visitors' parking areas and may acquire a visitor's permit from Public Safety at any time or from the ELC switchboard from 8 a.m.–11 p.m. Visitor public parking also is available near campus.

For parking for first-year students, their families and guests, refer to the first-year student parking policy. A copy of the University parking brochure is available upon request from the Department of Public Safety at 570-577-3333 or online at www.bucknell.edu/x6449.xml.

Student Finances

Q. How do I get information about student or parent loans?

- A.** The Office of Financial Aid (570-577-1331) can give you information regarding student, parent, and alternative loan options that can assist you in paying your semester bill. For more information, please visit www.bucknell.edu/x44239.xml.

Q. How are students billed for the first year?

- A.** Tuition bills are sent in July and December to the address the student indicates on the acceptance of admission form. Full payment for each semester is usually due 10-15 working days prior to enrollment. Questions regarding billing statements should be directed to Accounts Receivable at 570-577-3733 or acctrec@bucknell.edu.

Q. How are transfer students billed?

- A.** Registration materials must be returned to the Registrar's Office and class schedules approved by the dean before a bill is mailed. The initial bill is usually for tuition and fees. Room and board charges will be billed upon completion of room assignment and board plan enrollment. Any additional questions should be directed to Accounts Receivable Office at 570-577-3733 or acctrec@bucknell.edu.

Q. What insurance plans are required for my student?

- A.** Every undergraduate student is required to have his or her own medical insurance. This can be accomplished by providing evidence of your own coverage acceptable to Bucknell, or by purchasing the University-sponsored program. Students will receive information regarding

the University-sponsored plan, as well as a form for verification of their own insurance, through a summer mailing. All international students must purchase the University-approved health insurance plan, regardless of any other coverage that they may have.

To complete registration for fall semester, the waiver/enrollment insurance card must be returned to the University by the date stated in the mailing.

Claim forms for the University-sponsored plan are available at the Student Health Service or from the University's claims administrator, at 717-766-7621. There is one form of insurance that is required; and there are two other forms that are recommended.

- In addition to health insurance, since the University does not provide insurance to cover loss of, or damage to, students' goods in residence halls, parents may want to purchase personal property insurance for individuals housed on campus. This coverage is available for a nominal fee. Information about personal-property insurance is sent to incoming first-year students at their homes. Parents should check with family insurance agents to make sure that the students' personal property is not already insured under existing homeowner policies (and do take into consideration deductibles and exclusions).
- Finally, since the cost of private tuition is substantial, and since health-related withdrawals can compromise family finances, Bucknell offers tuition insurance, which is available for a very reasonable sum. This optional insurance plan is offered through A.W.G. Dewar, Inc. It assures that subscribers who withdraw due to illness or accident can obtain repayment throughout the semester, even if Bucknell's own refund period has long expired. For information on price, benefit levels, eligibility, and limitations, or for an application form, please contact John Strain at Dewar, 4 Batterymarch Park, Suite 320, Quincy, MA 02169.

Q. How can I find out about other Bucknell families in my area?

- A.** Parents are invited to, and always welcome at, Bucknell Club events in their area. A list of Club events is located at www.bucknell.edu/Alumni. For more information, please visit www.bucknell.edu/Parents.

Campus Contacts and Local Community Information

Q. What local hotel and/or dining provisions are available for visiting parents?

- A.** Local hotels and motels provide adequate facilities for all of our parents on special weekends. It is suggested that you make reservations for future visits, especially during Fall Family Weekend, Homecoming, and Commencement as soon as possible. Visit the Susquehanna Valley Visitors Bureau (www.visitcentralpa.org) for more information about local hotels and restaurants. Also visit Lewisburg's website at www.lewisburg.com as they have a student page with special offers just for Bucknellians.

Commencement 2014 may seem far away, but reservations can be made in advance. During this special weekend only, residence hall rooms are available at a nominal fee for families of seniors. Information regarding the reservation of residence hall rooms for Commencement 2014 is mailed to the senior's home address in late January. This information will also be available on the web. A few area hotels and motels will take reservations up to four years in advance and others accept reservations up to one year in advance of the event. In addition, guests are always welcome to eat in the Bison (Elaine Langone Center).

Campus Contacts

ACADEMIC AFFAIRS

www.bucknell.edu/AcademicAffairs
570-577-1561

College of Arts and Sciences

www.bucknell.edu/x4514.xml
570-577-1301

College of Engineering

www.bucknell.edu/Engineering
570-577-3711

ADMISSIONS

www.bucknell.edu/Admissions
570-577-1101

ALUMNI RELATIONS

www.bucknell.edu/Alumni
570-577-3223
alumni@bucknell.edu

ATHLETICS AND RECREATION

www.BucknellBison.com

BUSINESS AND LEGAL MATTERS

David Surgala, Vice President for
Administration and Finance
570-577-3811

Wayne Bromfield, General Counsel
570-577-1149

CAMPUS ACTIVITIES AND PROGRAMS

www.bucknell.edu/CAP
570-577-1217

CAREER DEVELOPMENT CENTER

www.bucknell.edu/CareerDevelopment
570-577-1238

COMMUNICATIONS

www.bucknell.edu/communications
570-577-3260

COURSE REGISTRATION, GRADES AND TRANSCRIPTS

www.bucknell.edu/Registrar
570-577-1201

DEAN OF STUDENTS

www.bucknell.edu/DeanOfStudents
570-577-1601

DINING SERVICES

www.bucknell.edu/DiningServices
570-577-1240
dining@bucknell.edu

DRUG AND ALCOHOL PROGRAMS

www.bucknell.edu/x31141.xml
570-577-1159

FINANCIAL AID

www.bucknell.edu/FinancialAid
570-577-1331

FRATERNITY/SORORITY AFFAIRS

www.orgs.bucknell.edu/GreekLife
570-577-1602

HOUSING AND RESIDENTIAL LIFE

www.bucknell.edu/HousingResLife
570-577-1195

INFORMATION SERVICES AND RESOURCES (LIBRARIES/COMPUTING)

www.bucknell.edu/isr
570-577-1342

INTERNATIONAL EDUCATION

www.bucknell.edu/InternationalEducation
570-577-3796

INTERNATIONAL STUDENT SERVICES

www.bucknell.edu/iss
570-577-3794

JUDICIAL AFFAIRS

www.bucknell.edu/DeanOfStudents
570-577-1634

LESBIAN, GAY, BISEXUAL AND TRANSGENDER AWARENESS

www.bucknell.edu/lgbt
570-577-1609

MULTICULTURAL STUDENT SERVICES

www.bucknell.edu/MSS
570-577-1095

ORIENTATION, LEADERSHIP AND VOLUNTEER SERVICES

www.bucknell.edu/DeanOfStudents
570-577-1638

PARENTS ASSOCIATION BOARD OF DIRECTORS

www.bucknell.edu/parents
570-577-3200

PARENTS FUND

www.bucknell.edu/Gifts
www.bucknell.edu/Giving
www.bucknell.edu/parents
570-577-3200

Campus Contacts (continued)

PARENTS FUND AND FAMILY PROGRAMS

www.bucknell.edu/x37004.xml
570-577-3200

PRESIDENT

www.bucknell.edu/President
570-577-1511

PSYCHOLOGICAL SERVICES

www.bucknell.edu/PsychServices
570-577-1604

PUBLIC SAFETY

www.bucknell.edu/PublicSafety
570-577-3333
Emergency, 570-577-1111

RELIGIOUS PROGRAMS

www.bucknell.edu/Chaplain

RESERVE OFFICERS' TRAINING CORPS (ROTC)

www.bucknell.edu/ROTC
570-577-1013

RESIDENTIAL COLLEGES

www.bucknell.edu/ResColleges
570-577-3320
rescollege@bucknell.edu

STUDENT ACCOUNTS

www.bucknell.edu/finance
570-577-3733
acctrec@bucknell.edu

STUDENT HEALTH SERVICE

www.bucknell.edu/HealthServices
570-577-1401

WOMEN'S RESOURCE CENTER

www.bucknell.edu/x7027
570-577-1375

YEARBOOK — L'AGENDA

www.orgs.bucknell.edu/lagenda
570-577-1054



The Susquehanna Valley Visitors Bureau welcomes you to the Lewisburg area.

We encourage you to visit our website at www.visitcentralpa.org. It is updated regularly and will direct you to members' sites as well as provide information about upcoming events. For information outside our immediate area, we encourage you to visit the site of Valleys of the Susquehanna, www.pavalleys.com.

When you arrive, be sure to make a stop at the Susquehanna Valley Visitor Center, located at the intersection of Route 15 and Hafer Road north of Lewisburg and open seven days a week. Our friendly staff and volunteers can help direct you to your destination, offer suggestions to make your stay with us even more enjoyable, and share with you special places and people that will make your Lewisburg years memorable.

Tips from Experienced Long Distance Families

- Make hotel and dinner reservations for weekends you will be in Lewisburg well in advance of when you think you should.
- If you are planning to fly to Bucknell, check out your options into Harrisburg (MDT) as well as Baltimore Washington (BWI). Tip: Southwest and AirTran both fly into BWI, and may not show up on travel search websites. Other airports commonly used by students include Williamsport, Philadelphia, NY area.
- Order your student's computer through Bucknell. Bucknell then provides support and service on campus for it. Plan to buy the printer once you arrive.
- Please check the www.bucknell.edu website to help begin finding answers to some of your questions, as well as the Parents tab on the website. Please email parents@bucknell.edu with any questions or comments. Also, watch for the Family Connection electronic newsletter sent via email. Another opportunity to stay informed about campus life is to subscribe to *The Bucknellian*.
- Tips for packing clothing for the change of seasons: Plan for the summer to winter clothing switch — pack all of your lighter weight clothes in plastic bins with prepared shipping labels to send them back home. Also pack all of your winter clothing in bins before you move to Bucknell. Parents can then send the clothes as the weather changes, and then your students are ready to ship lighter weight clothes home.
- Don't miss the **Drop Off and Dine Dinner** on August 20, 2010 after you "drop" your student off!
- Don't forget during fall break most students will be leaving campus. Make the travel plans now, or determine if your student can stay in the dorms during this time.
- Contact the transportation office regarding airport shuttles for travel arrangements for fall break, Thanksgiving, and holiday break. Consult the housing calendar to see when students must vacate their rooms.
- Check with professors and your final exam schedules about classes scheduled before breaks, if that 3 p.m. class won't meet, you can book an earlier flight.

Bucknell University Airport Shuttle Schedule

by Reservation Only — 2010 Fall Semester*

FALL SEMESTER ARRIVALS

DEADLINE FOR RESERVATIONS: 48 HOUR NOTICE REQUIRED

From airport to campus (classes begin Wednesday, August 25, 2010)

Harrisburg and Williamsport

Saturday, August 14, through Tuesday, August 24, 2010 @ 11 a.m., 2 p.m., 5 p.m., 8 p.m., 11:30 p.m.

Philadelphia Saturday, August 14, through Tuesday, August 24, 2010 @ 2 p.m., 7 p.m., 11:30 p.m.

JFK Sunday, August 15, and Sunday, August 22, 2010 @ 6 p.m.

FALL BREAK

DEADLINE FOR RESERVATIONS: NOON, WEDNESDAY, OCTOBER 13, 2010

From campus to airports (classes end Friday, October 15, 2010 at 5 p.m.)

Harrisburg and Williamsport

Friday, October 15, 2010 @ 5 a.m., 7 a.m., 12:15 p.m., 2 p.m., 5:15 p.m.; Saturday, October 16, 2010 @ 5 a.m., 12:15 p.m.

Philadelphia

Friday, October 15, 2010 @ 5 a.m., 12:15 p.m., 5:15 p.m.; Saturday, October 16, 2010 @ 5 a.m., 12:15 p.m.

From airports returning to campus (classes begin Wednesday, October 20, 2010)

DEADLINE FOR RESERVATIONS: 9 A.M., MONDAY, OCTOBER 18, 2010

Harrisburg and Williamsport Tuesday, October 19, 2010 @ 11 a.m., 2 p.m., 5 p.m., 8 p.m., 11:30 p.m.

Philadelphia Tuesday, October 19, 2010 @ 2 p.m., 7 p.m., 11:30 p.m.

THANKSGIVING BREAK

DEADLINE FOR RESERVATIONS: 4 P.M., FRIDAY, NOVEMBER 19, 2010

From campus to airports (classes end Tuesday, November 23, 2010 at 5 p.m.)

Harrisburg and Williamsport

Tuesday, November 23, 2010 @ 5 a.m., 7 a.m., 12:15 p.m., 2 p.m., 5:15 p.m.

Wednesday, November 24, 2010 @ 5 a.m., 12:15 p.m.

Philadelphia

Tuesday, November 23, 2010 @ 5 a.m., 12:15 p.m., 5:15 p.m.

Wednesday, November 24, 2010 @ 5 a.m., 12:15 p.m.

DEADLINE FOR RESERVATIONS: 9 A.M., TUESDAY, NOVEMBER 23, 2010

From airports returning to campus (classes begin Monday, November 29, 2010)

Harrisburg and Williamsport Sunday, November 28, 2010 @ 11 a.m., 2 p.m., 5 p.m., 8 p.m., 11:30 p.m.

Philadelphia Sunday, November 28, 2010 @ 2 p.m., 7 p.m., 11:30 p.m.

FALL SEMESTER ENDS

DEADLINE FOR RESERVATIONS: 48 HOUR NOTICE REQUIRED

From campus to airports (exams end Thursday, December 16, 2010)

Harrisburg and Williamsport

Thursday, December 9, 2010 @ To Be Determined

Friday, December 10, 2010 @ To Be Determined

Saturday, December 11, 2010 @ To Be Determined

Monday, December 13, through Thursday, December 16, 2010 @ 5 a.m., 7 a.m., 12:15 p.m., 2 p.m., 5:15 p.m.

Friday, December 17, 2010 @ 5 a.m., 12:15 p.m.

Philadelphia

Thursday, December 9, 2010 @ To Be Determined

Friday, December 10, 2010 @ To Be Determined

Saturday, December 11, 2010 @ To Be Determined

Monday, December 13, through Thursday, December 16, 2010 @ 5 a.m., 12:15 p.m., 5:15 p.m.

Friday, December 17, 2010 @ 5 a.m., 12:15 p.m.

JFK

Friday, December 17, 2010 @ To Be Determined

*Reservations are through Bucknell Shuttles only, during regular business hours. No reservations are taken after the deadline. Shuttles will be canceled if there are no reservations. Bucknell reserves the right to alter times for inclement weather or other extenuating circumstances. On-line reservations are available at www.departments.bucknell.edu/rics.

The University is not liable for students who miss shuttles due to flight changes or delays and students are responsible for finding alternate means of transportation to the university.

Students not reserving a shuttle in advance of the deadline must make private arrangements at student's expense for a limo, taxi or friend.

2010–11 Bucknell University Parents Board of Directors

Michael Pepe P'10, '12, President

These parents are resources whom you should feel free to contact.

Maria Allwin (Michael '12)

Greenwich, CT

Home: 203-869-0693

mallwin@aol.com

James and Diane Baker (Carolyn '10, Kristina '12)

Ridgefield, CT

Home: 203-438-6921

dmbinct99@aol.com

Michael and Betsy Benenson (Katharine '13)

Greenwich, CT

Home: 203-629-5206

mбенenson@aisgroup.com

katillac@optonline.net

Gordon Brody (Emily '12)

Palo Alto, CA

Home: 650-853-0950

gabrodynd@mac.com

John and Meg Campoli (Jaclyn '07, Ross '11)

Cresskill, NJ

Home: 201-871-1162

mbcampoli@gmail.com

john@jcampoli.com

Cindi Carpenter (Gabrielle '11, Jacquelynne '13)

North Potomac, MD

Home: 301-947-6844

cynthia.carpenter@nrc.gov

Patti Clemens (Molly '13)

Studio City, CA

Home: 818-762-5853

modoodle@aol.com

Doug and Jennifer Collins (Alexa '13)

Sherborn, MA

Home: 508-651-2303

collinsad@comcast.net

collinsad@aol.com

Christine Curtin-Barnes (Christopher '12)

New York, NY

Home: 212-369-5998

ccurtin@nydailynews.com

Peter and Christina Dawson (Miles '12)

Home: 925-377-5643

Teen_dawson@msn.com

Pad_home@hotmail.com

Gary and Susan DiCamillo (Ben '11)

Home: 781-235-4319

garydicamillo@gmail.com

s.dicamillo@gmail.com

Frank and Mary Fetchet

(Brad '99, Wes '04, Christopher '11)

New Canaan, CT

Home: 203-966-0677

ffetchet@gmail.com

mafetchet@voicesofsept11.org

Eileen Finn (Megan '12)

New York, NY

Home: 212-628-0659

efinn@sprynet.com

Jim Flannery and Cornelia Koetter (Therese '11)

Baltimore, MD

Home: 410-377-4456

jflannery@comcast.net

corz@comcast.net

Steve and Kathy Hirschfeld (Zack '11)

San Francisco, CA

Home: 415-550-0904

shirschfeld@chklawyers.com

hirschsf@sbcglobal.net

Jim and Janet Hislop '79/'78 (Emily '11)

Summit, NJ

Home: 908-273-6212

hislopfamily5@aol.com

james.hislop@trpfund.com

Jeff and Jane Ingram (Julie '13)

Andover, MA

Home: 978-474-4330

jeff@mccourtgroup.com

ingram4j@comcast.net

Garrison and Kelly Jackson (Ragin '13)

Cortlandt Manor, NY

Home: 914-739-4552

garrison@experti.com

kelly@experti.com

Tom and Diana Kelly (Ross '11)

Great Falls, VA

Home: 703-757-2290, VT: 802-824-4407

rosie9916@aol.com

tnkelly@gmail.com

Tom and Dawn Kreitler (Charlie '12)

Fairfield, CT

Home: 203-256-8667

dkreitler@optonline.net

tsk@cpeaton.com

Parents Board of Directors (continued)

John and Louise MacMillan (Elizabeth '12)
Andover MA
Home: 978-474-4791
lpmacmillan@gmail.com

Tom and Luby Masi (Jenna '13)
Basking Ridge, NJ
Home: 908-204-9318
tmasi@trilogiadvisors.com
lubamiral@aol.com

Michael and Sandy McManus (Mike '13)
Bronxville, NY
Home: 914-337-1313
mmcmanus@misonix.com
ollie10708@aol.com

John and MaryAnn Pendleton (Brian '11)
Mountain Lakes, NJ
Home: 973-335-8754
jpendleton@mccarter.com
mapendleton@aol.com

Michael and Laurie Pepe (Gordon '10, Jason '12)
Summit, NJ
Home: 908-273-4171
pepemi@comcast.net
mlp5@comcast.net

Brad and Mindy Rendell (Brittany '12)
Winnetka, IL
Home: 847-446-1928
bradr@rendellsales.com
rendell5@aol.com

John '70 and Catherine Richards (Jenna '12)
Westport, CT
Home: 203-341-0800
Catherine.beardsley@mkmv.com
jbr48@yahoo.com

Paul and Caroline Rogers (Anna '12)
Bronxville, NY
Home: 914-961-2291
carolinealicerogers@gmail.com
paul.d.rogers@verizon.net

Ajay Saini and Mina Paul (Vikram '12)
Needham, MA
Home: 781-444-6842
ajaysaini@comcast.net
drminapaul@comcast.net

Jon Schotz and Patricia Wheeler (Katherine '11)
Santa Monica, CA
Home: 310-458-9402
jschotz@saybrook.net
pfw228@aol.com

Michael and Leanne Segal (Kaitlin '11)
Pacific Palisades, CA
Home: 310-454-8833
msegal@fredsegal.com
leannesegal@gmail.com

Max and Julie Silberman '78/'78
(Matthew '08, Karen '12)
Livingston, NJ
Home: 973-535-9157
julieAS57@comcast.net
clubmax15@gmail.com

Frank and Helen Stevenson (John '11)
Dallas, TX
Home: 214-352-5347
hstevenson@tx.rr.com
fstevenson@lockelord.com

Glenn and Deb Stewart (Greg '11)
Charlotte, NC
Home: 704-759-1630
glenn.l.stewart@bankofamerica.com
debstewart10@gmail.com

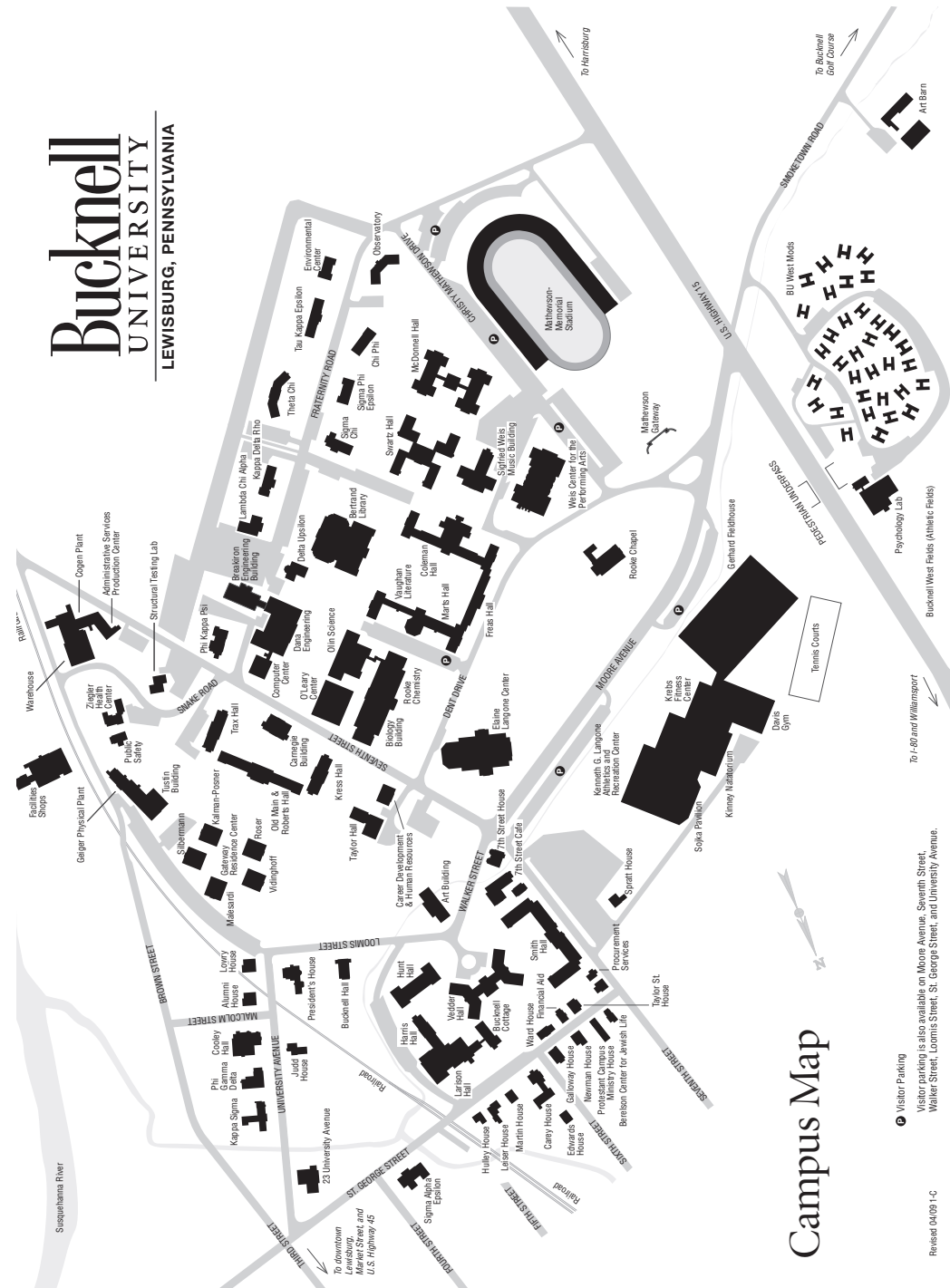
William and Nancy Tucker (Leslie '07, Christian '11)
Ringoes, NJ
Home: 908-788-8081
nftucker@aol.com
wm.tucker@gmail.com

John and Catherine Wetzel (Cate '13)
Dallas, TX
Home: 214-368-4307
wetzeltjc@swbell.net
wetzeltc@smtexas.org

Martin and Cheryl Wiewiorowski (Elizabeth '12)
Houston, TX
Home: 281-416-5594
mwiewiorowski@demac.com
cwiewiorowski@gmail.com

Gretchen Wilcox (Wes '13, Bridget '14)
Bernardsville, NJ
Home: 908-766-3433
gwilcox@gswilcox.com

Jeff and Cindy Yingling (Claire '13)
Kenilworth, IL
Home: 847-853-9319
jeffrey.w.yingling@jpmorgan.com
jwyngling@aol.com



Campus Map

Visitor Parking
Visitor parking is also available on Moore Avenue, Seventh Street, Walker Street, Loomis Street, St. George Street, and University Avenue.
Revised 04/09 1-C