

COURSES BEGIN SEPTEMBER 20TH 2021

REGISTRATION OPENS AUGUST 16TH 2021

Bucknell Institute for Lifelong Learning

FALL 2021 Course Catalog



Lifelong Learning



ONLINE AND IN-PERSON COURSE OFFERINGS

Welcome to Fall 2021 with BILL

21 CLASSES. . . .

6 SPECIAL PRESENTATIONS. . . .
both in and out of the classroom

Bucknell Institute for Lifelong Learning is dedicated to interactive learning, so most courses will be taught in person but a few will remain online. You can attend online classes and special presentations by clicking on a Zoom link sent to you in an email. On Zoom, you can ask questions and engage in discussions with class members. Course leaders can help you enjoy the usual fine BILL experience.

If you've kept in touch with family and friends via Zoom while staying safe at home, you know Zoom is easier than using Skype or FaceTime. All you need is an internet connection and a computer, laptop or smartphone with a camera and microphone. Even without those, you can call in to a Zoom presentation on your phone, although you won't have a picture.

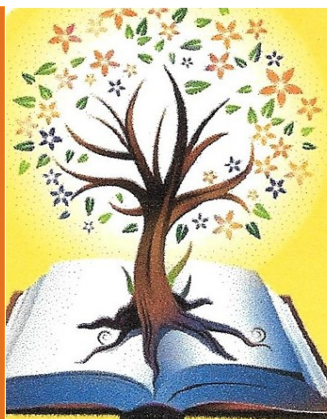
You can learn to use Zoom in less than 10 minutes, and BILL's special tutorials will help.

**Be a member of a BILL course or
join a Special Presentation
by attending in person or
through an online presentation
by clicking on a Zoom link.**

VACCINATION REQUIRED TO ATTEND IN-PERSON CLASSES AND EVENTS

Participation at in-person classes, presentations and receptions is limited to those who have been fully vaccinated against COVID-19. Physical distancing may be possible in some classrooms but cannot be guaranteed due to space limitations. As this catalog goes to press, masking is optional; however, BILL may require masking indoors if conditions or guidelines change.

Several courses taught on Zoom are available for those who have not been vaccinated and others interested in the topics. Two Special Presentations will be delivered via Zoom.



Grow Your Mind!

FALL 2021 COURSE CATALOG

REGISTRATION

OPENS ONLINE:

Mon., Aug. 16, 11 a.m.
No walk-in registration.
The office is closed to visitors.

PHONE & MAIL-IN REGISTRATION BEGIN:

Tues., Aug. 17, 11 a.m.
Classes begin Sept. 20

570-522-0105

lifelonglearning@bucknell.edu

Bucknell Institute for Lifelong Learning
115 Farley Circle Suite 111
Lewisburg, PA 17837

Bucknell
UNIVERSITY

BUCKNELL INSTITUTE
FOR LIFELONG LEARNING

CONTENTS

Cover Design by Margaret Snow

- 2 COURSES AT A GLANCE**
- 3 BILL MEMBERSHIP & BENEFITS**
- 4-7 SPECIAL PRESENTATIONS**
- 7 CLASS LOCATIONS**
- 8-19 COMPLETE LIST OF COURSES**
 - MON. COURSES, pages 8-9**
 - TUES. COURSES, pages 10-13**
 - WED. COURSES, pages 14-16**
 - THURS. COURSES, pages 16-18**
 - FRIDAY COURSE, page 19**
- 11 HOW TO REGISTER FOR COURSES**
- 12 BILL BENEFITS: OVERSEAS TRIPS**
- 19 CANCELLATION POLICIES**
- 20-21 COURSE LEADER BIOS**
- 22 BILL POLICIES**
- 23 REGISTRATION FORM**
- 24 VOLUNTEERS**

OUR MISSION

The mission of the Bucknell Institute for Lifelong Learning is to engage adult learners from a wide range of educational backgrounds in creative and intellectual activities that expand their horizons, invigorate their minds, stimulate curiosity and the joy of learning, and provide opportunities for social interaction. Members participate in Institute courses and other educational opportunities that reflect Bucknell University's commitment to liberal education. The Institute endeavors to involve all participants in active learning, where ideas, interests, and life experiences are shared.

COURSES AT A GLANCE

Most courses meet six weeks with exceptions as noted.
Locations are listed below. Tuition for all classes is \$50.
Complete class descriptions can be found on pages 8-19.

MONDAY

- | | | |
|-------------|---|---|
| 471A | Humans & Monsters: Reading Frankenstein
Walters 10-11:30 a.m. | 7-week course ALSO ON ZOOM THURSDAYS*
Spring Run Conference Center |
| 472 | The Selected Poems of Ted Kooser
Coney 10-noon | BILL Office Classroom #1 |
| 473 | American Foreign Policy 2021
Travis 1-3 p.m. | Online, via Zoom — 7-week course |
| 474 | A History of the Book & Bookbinding
Weyant 1-3 p.m. | Spring Run Conference Center |

TUESDAY

- | | | |
|------------|---|---------------------------------|
| 475 | The Evolution & the Origin of Religions
Stayton & Fletcher 10-11:30 a.m. | Spring Run Conference Center |
| 476 | Writing Through Memoir to Meaning
Hungerford 10-noon | RiverWoods Senior Living Campus |
| 478 | Relationships Between Mathematics and Music
Kindig 1-2:30 p.m. | RiverWoods Senior Living Campus |
| 479 | The Devil's Cloth: An Artistic Investigation Into the Varied & Controversial Stripe
Snow 1-3 p.m. | East Buffalo Township Building |
| 480 | Race, Religion and Politics in the American Public Square
Shinn 1-3 p.m. | Spring Run Conference Center |
- 9/21-11/2 NOTE: The duration of this course is 7 weeks but one class will be canceled. The class will meet for only six weeks. Participants will be notified of the canceled date before the first class.*

WEDNESDAY

- | | | |
|------------|--|--|
| 481 | The Anthropocene
Fletcher 10 – 11:30 a.m. | Spring Run Conference Center |
| 482 | Issues in the Criminal and Civil Justice Systems
Feudale 10 – 11:30 a.m. | 7-week course
Union County Government Center |
| 483 | An Introduction to Leonardo da Vinci
Sperling 1-2:30 p.m. | Spring Run Conference Center |
| 484 | The Literature of Edith Wharton
Coney 1-3 p.m. | BILL Office Classroom #1 |
| 485 | Women Flourishing as We Age
Gerdes 1:30-3 p.m. | Online, via Zoom |

THURSDAY

- | | | |
|-------------|---|---|
| 471B | Humans & Monsters: Reading Frankenstein
Walters 10-11:30 a.m. | 7-week course Online, via Zoom
*This class offered in person on Mondays |
| 486 | West African Drumming Traditions
Kopf 10-11:30 a.m. | 8-week course
East Buffalo Township Building |
| 487 | The Northwest Coast Indian Tribes
Greaves 10-noon | 5-week course
Spring Run Conference Center |
| 488 | A Fresh Look at 20th Century Music
Boerckel 1-2:30 p.m. | Spring Run Conference Center |
| 489 | Unlocking the Mysteries of Earthquakes
Nottis 1-3 p.m. | BILL Office Classroom #1 |
| 490 | Let's Learn Some Science Hands-On!
Kries 3-4:30 p.m. | Spring Run Conference Center |

FRIDAY

- | | | |
|------------|--|---------------------------------|
| 491 | History of American Home Cooking: From Johnny Cakes to Sheet Pan Dinners
Zimmerman 10-11:30 a.m. | Course leader's home, Lewisburg |
|------------|--|---------------------------------|

***To enjoy BILL classes and other benefits,
you must be a member.***

BENEFITS OF MEMBERSHIP

As a BILL member you can

- **REGISTER** for one or two (or more) courses per term
- **ENJOY** opportunities for learning, growth and enrichment
- **EXPLORE** new areas of interest and challenging topics
- **CONNECT** with interesting new people
- **BE INVITED** to travel with Overseas Adventure Travel for 2023 (2022 trips are filled)
- **RECEIVE** announcements of Special Presentations and priority registration for those sessions held online by Zoom
- **SEE** course catalogs (paper copy on request)
- **SHARE** special announcements and **EXHIBIT** your artwork
- When scheduled, **ATTEND** receptions, **TAKE** bus trips, **ACCESS** Bucknell's Bertrand Library collection, and **ENJOY** other special events and privileges

AS WE GROW OLDER, finding opportunities for continued growth and self-discovery can become more difficult. At BILL, every course, lecture or event is an avenue for intellectual enrichment and social connectivity where you can discover new interests, explore new directions and forge new relationships with BILL members. Whatever your prior educational experience, these programs are for you. All you need is curiosity and a willingness to learn or even to step outside your comfort zone.

JOIN OTHER ENTHUSIASTIC LEARNERS in a relaxed, congenial setting. Stimulating programs expose members to new ideas and interesting topics through classes, study groups, lectures and cultural events. Classes are interactive and meet for five to eight sessions during spring and fall terms.

FEES & PAYMENT OPTIONS

MEMBERSHIP FEES: BILL membership is required to register for courses

Yearly (two terms) — \$60 Lifetime — \$500

The new member trial has been extended for fall 2021. If you have never been a member of BILL before, you are eligible for a one-time-only, single-term trial membership. Membership in BILL provides access to course registration each term (tuition and fees still apply), email announcements, newsletters and Special Presentations. The free trial option is only available by contacting the BILL office by phone at 570-522-0105, email (lifelonglearning@bucknell.edu) or mail (115 Farley Circle, Suite 111, Lewisburg PA 17837).

INDIVIDUAL COURSE FEES: 5-8 session courses—\$50

PAYMENT OPTIONS: Payments may be made online with a credit card or by mail with a check, payable to Bucknell University. **Scholarships are available. Please contact the BILL office to inquire about a scholarship.**

See pg. 11 and 22 for registration directions. Mail-in registration form is on pg. 23.

SPECIAL PRESENTATIONS

This fall BILL will offer its **Special Presentations** — periodic lectures by distinguished presenters on new, interesting topics — with four in person and two by Zoom.

BILL membership is NOT required to attend Special Presentations, so invite friends and family, wherever they may be, to attend.

PROGRAMS ARE FREE. For Zoom presentations, you must register three days in advance to receive the link to the presentation. **In-person Special Presentations currently are scheduled for Buffalo Valley Lutheran Village Common** (unless indicated); if conditions require a change of venue, ample notification will be given.

Here's how to be part of these dynamic lectures, followed by a question and answer period:

- 1) **Watch for the email reminder**, sent to all current members before each program. Register by following the instructions provided.
- 2) **For in-person Special Presentations**, doors open one-half hour ahead of the program. Come early and mingle.

FALL TERM KICKOFF EVENT

TUESDAY
SEPT. 14
3 p.m.
VENUE TBA

The Value of Lifelong Learning DISTINGUISHED PANEL

The Bucknell Institute for Lifelong Learning obviously is a “lifelong learning” institute — but what does that really mean? Each of our three panelists has an affiliation with Bucknell and a connection to BILL. Each will briefly provide a different perspective on lifelong learning, followed by an opportunity for audience members to share what lifelong learning means to them. We're excited to open the fall 2021 term with this special panel presentation and invite past, present and future members to join us.

Genie Gerdes, former Bucknell dean, chair of BILL's Steering Committee, moderator

Lifelong learning as a goal for undergraduate education:

Elisabeth Mermann-Jozwiak, Bucknell's provost, the office to which BILL reports

The role of lifelong learning in vital aging:

Mick Smyer, Bucknell's provost at BILL's inception, expert on aging

The value of taking and teaching BILL classes:

Gary Sojka, former Bucknell president, BILL course leader and course member

And YOU — *what do lifelong learning and BILL mean to you?*



Genie Gerdes



Elisabeth Mermann-Jozwiak



Mick Smyer



Gary Sojka

SAVED
FOR
YOU

SPECIAL PRESENTATIONS



TUESDAY
AUG. 24
NOON
via Zoom

The Pull of Poetry CHET'LA SEBREE

During the early years of World War I, Canadian physician Lt. Col. John McCrae wrote “In Flanders Fields” after a friend and fellow soldier died in battle. While the war still raged, the poem was used to recruit soldiers. It was also used to encourage people to buy war bonds. After the war ended, “In Flanders Fields” maintained its potency. It became one of the most popular poems associated with the conflict — often recited on days of remembrance. Why is that? Why do people read poems — as opposed to excerpts from novels — at weddings, funerals and other ceremonies? Why do poems like this one and Amanda Gorman’s Inaugural “The Hill We Climb” resonate with so many of us? This lecture will talk about how poems pull in individuals and maintain their power.

Chet'la Sebree is the director of the Stadler Center for Poetry & Literary Arts and an assistant professor at Bucknell University. She is the author of Field Study, winner of the 2020 James Laughlin Award, and Mistress, which was nominated for an NAACP Image Award. Her work has most recently appeared in Ibram X. Kendi and Keisha N. Blain’s Four Hundred Souls: A Community History of African America, 1619-2019.



THURSDAY
SEPT. 9
NOON

Emerging Viruses and How New Vaccine Technologies Can Fight Them MARIE PIZZORNO

With the emergence of the novel coronavirus SARS2 in 2019, the world has been managing and suffering from one of the worst infectious disease outbreaks since the 1918 influenza pandemic. Because the human population had never been exposed to this virus before, no one had any prior immunity to SARS2, which resulted in a high level of serious disease and death.

This presentation will explain what viruses are and how they are different from cellular pathogens such as bacteria and how viruses can “spill over” from wild animals into humans, leading to new virus outbreaks and possibly pandemics. Finally, we will explore the novel technologies used to develop the COVID-19 vaccines and examine how scientists were able to manufacture and test these safe and effective vaccines so quickly.

Marie Pizzorno is a molecular virologist currently working on a virus that infects honeybees. Professor of biology and cell biology/biochemistry at Bucknell University, she offers courses in virology and molecular biology. Last semester, along with Deborah Sills in the civil and environmental engineering department, she helped monitor campus wastewater for the presence of COVID RNA as a supplement to surveillance testing.

SPECIAL PRESENTATIONS

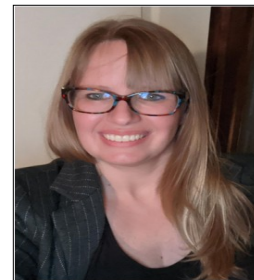


Sue Auman

THURSDAY
NOV. 11
Noon*
via Zoom

Community, When You Need It Most

SUE AUMAN and
KIM AMSLER



Kim Amsler

For people living with low income, barriers to self-sufficiency can contribute to cycles of poverty. Lack of safe and stable housing and reliable transportation, poor nutrition, under-education, incarceration, unemployment, and income insecurity can be obstacles for local residents. The Union-Snyder Community Action Agency (CAA) is dedicated to reducing poverty through self-sufficiency initiatives for families and individuals with our community partners. CAA addresses barriers through strengths-based, holistic programs and services to help people thrive and reach a state of abundance and prosperity. During the COVID-19 pandemic, CAA responded by springing into action with the motto “Now is our time.” While prioritizing the safety and well-being of staff, innovative projects were rolled out to support community members in a time of need.

Highlighted in this program will be the COVID-19 Basic Needs delivery program, rental assistance programs for COVID-affected families, and the innovative Union County Food Hub partnership with the Miller Center/YMCA, Evangelical Hospital and Geisinger Health System.

Sue Auman is executive director of the Union-Snyder Community Action Agency, bringing more than 20 years in nonprofit management, strategic planning, financial management and analysis, team building and leadership to the agency.

Kim Amsler is operations director of the Union-Snyder Community Action Agency, bringing 15-plus years of nonprofit management skills to the agency.

***An optional walking tour of the Union County Food Hub is planned for 3:30 pm. Space is limited with priority given to BILL members. Details announced later.**



TUESDAY
NOV. 30
3 :30 p.m.

Leading the Way From Colonial Resistance to Independence in Guyana:

**The Caribbean Legacy of
Linden Forbes Sampson Burnham**
LINDEN LEWIS

To understand the history of modern Guyana, one should know how charismatic political leader Linden Forbes Sampson Burnham shaped its development, from his contribution to colonial resistance to the consolidation of an independent country. A formidable Caribbean leader who initiated significant regional economic and political initiatives, the late politician guided the nation to independence and the transition to the Republic by 1970. Professor Lewis researched the political trajectory of Forbes Burnham, the domination of the party he led — People’s National Congress — and his nationalist philosophy. He offers a unique perspective of this important political and cultural figure and Guyanese colonial and postcolonial history — a history marked by British authoritarian rule, including slavery and indenture. This imperial history was combined and amplified by the United States’ Cold War interests in preventing another Cuba from emerging in the Americas.

Linden Lewis is a former Presidential Professor and served as chair of the Sociology Department and associate dean of social science at Bucknell. His areas of specialization are race, culture and gender—particularly Caribbean masculinity, political sovereignty, and labor and state relations. He has lectured extensively throughout the Caribbean, Europe, the U.S., and Africa.

CO-SPONSORED SPECIAL EVENT



MONDAY

OCT. 4

3:30 p.m.

Location TBA

Of Bodies and Borders

ADRIANA ZAVALA

BILL is co-sponsoring this public presentation by visiting Phi Beta Kappa Scholar Adriana Zavala. This lecture examines works by Latin American-descended visual artists in the United States affected by the violence of colonialism, empire and ongoing politicization of borders.

The guest speaker is a jointly appointed associate professor in the Department of History of Art and Architecture and the Department of Studies in Race, Colonialism, and Diaspora at Tufts University. Her book *Becoming Modern, Becoming Tradition: Women, Gender, and Representation in Mexican Art* (2010) won the Arvey Prize from the Association of Latin American Art in 2011. She has published widely and curated several exhibitions including “Frida Kahlo: Art, Garden, Life” at the New York Botanical Garden in the Bronx (2015), with the accompanying catalog *Frida Kahlo’s Garden* (2015). She is also the author of Oxford’s online annotated bibliography on Frida Kahlo. Her current research focuses on Chicana and Latina artists in the United States.

Main sponsors of the campus event include Bucknell University’s English Department, Women’s & Gender Studies Department, Art & Art History Department, Griot Institute for the Study of Black Lives & Cultures, the Center for the Study of Race, Ethnicity & Gender, Samek Art Gallery and the Humanities Center.

CLASS LOCATIONS

BILL OFFICE CLASSROOM

**115 Farley Circle, Suite 111, Lewisburg
SPRING RUN CONFERENCE CENTER**

For the BILL office — Start at the intersection of PA Rt. 45 and US Rt. 11 in Lewisburg. Drive west on Rt. 45 for 1.1 miles, then turn right (north) onto Reitz Blvd. (into Brookpark Farm). Drive 0.5 miles (past the library) and make the last right into the Spring Run Professional Park. The office is located to the left of Advanced Skin Care salon. Look for a yellow sign on the building.

For Spring Run Conference Center — Follow the directions above. The Conference Center is the center building, which has a large “Spring Run” sign.

UNION COUNTY

GOVERNMENT CENTER

155 North 15th St., Lewisburg

Start at the intersection of PA Rt. 45 and US Rt. 15 in Lewisburg. Drive west on Rt. 45 for 0.4 mile, then turn right (north) onto 15th Street. The Government Center is 0.2 mile ahead on the left.

RIVERWOODS SENIOR LIVING CAMPUS

270 Ridgecrest Circle, Lewisburg

Start at the intersection of PA Rt. 45 and US Rt. 15 in Lewisburg. Drive 1.5 miles north on Rt. 15 (past Weis Markets). At the traffic light near Evangelical Hospital and McDonald’s, turn right (east) onto River Road. Take the first right onto RidgeCrest Circle and drive 0.3 miles through the parking area to a stop sign. Park in the lot directly ahead. Enter the three-story RidgeCrest building through the main entrance under the portico. Ask at the reception desk for directions to the Creative Arts Room.

EAST BUFFALO TOWNSHIP MUNICIPAL BUILDING

589 Fairground Rd., Lewisburg

From the intersection of US Rt. 15 and PA Rt. 45 in Lewisburg, drive west on PA 45 for 0.9 miles to the second traffic light. Turn right onto Fairground Road and travel 0.2 miles. The municipal building will be on the left.

**For the most up-to-date scheduling information
check www.bucknell.edu/lifelonglearning**

COURSE #471A

**HUMANS AND MONSTERS:
READING FRANKENSTEIN**

MONDAYS 10-11:30 a.m. 7 SESSIONS

9/20, 9/27, 10/4, 10/11, 10/18, 10/25, 11/1

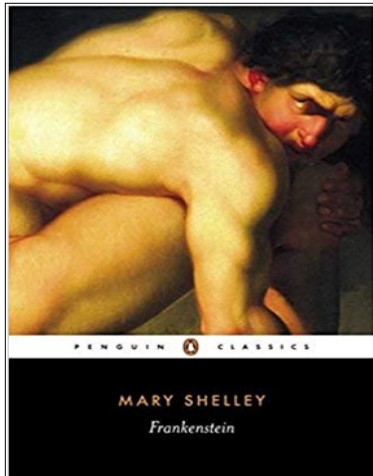
Cost: \$50 **Class Size:** 10-25

COURSE LEADER: KERRY WALTERS

LOCATION: SPRING RUN CONF. CENTER

Thanks to a slew of bad horror movies, the name Frankenstein is well known. But the 1818 novel that inspired the films, written by a young woman named Mary Shelley, is both far more entertaining than the films and a venue for rich philosophical exploration. Course members will read and discuss the story of Victor Frankenstein and his creature to reflect on the porous border between “monstrous” and “normal”; the nature and limits of science; cloning and human enhancement; loneliness; language acquisition; birthing; blasphemy; sexuality; courage and cowardice; and vengeance versus justice. The course will also examine the prolific influence of Shelley’s novel on popular culture.

Required materials for this course: *Frankenstein* by Mary Shelley (Penguin; ASIN : B01FKT6O1O). This edition only, please, so we all have the same pagination for discussions.



**THIS
COURSE
ALSO
PRESENTED
ON ZOOM
THURSDAYS
AT 10 A.M.
See pg. 16
for details.**

COURSE #472

**THE SELECTED POEMS
OF TED KOOSER**

MONDAYS 10-noon 6 SESSIONS

9/20, 9/27, 10/4, 10/11, 10/18, 10/25

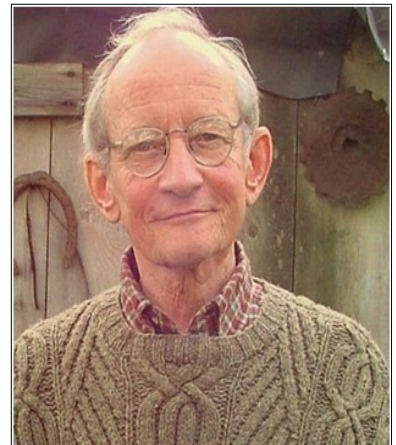
Cost: \$50 **Class Size:** 3-8

COURSE LEADER: LOGAN CONEY

LOCATION: BILL OFFICE CLASSROOM #1

Often people avoid the study of poetry because they feel they don’t “understand” it. In so doing, they close themselves off from an experience of beauty, grace and amazement.

In this class, through reading, analyzing and discussing the poems of Ted



Kooser, U.S. poet

Ted Kooser

laureate and Pulitzer Prize winner, participants will place priority upon “feeling” poetry as they come to “understand” it.

With his simple diction and conversational style, Kooser invites readers to pay attention to the world around them.

**Have a great idea for a course?
Interested in leading one?
CONTACT THE BILL OFFICE
lifelonglearning@bucknell.edu
or call 570-522-0105**

REGISTRATION FORMS CAN BE FOUND AT END OF THIS CATALOG OR ONLINE.

COURSE #473

**AMERICAN FOREIGN POLICY
2021**

MONDAYS 1-3 p.m. 7 SESSIONS

9/20, 9/27, 10/4, 10/11, 10/18, 10/25, 11/1

Cost: \$50 Class Size: 6-20 BY ZOOM

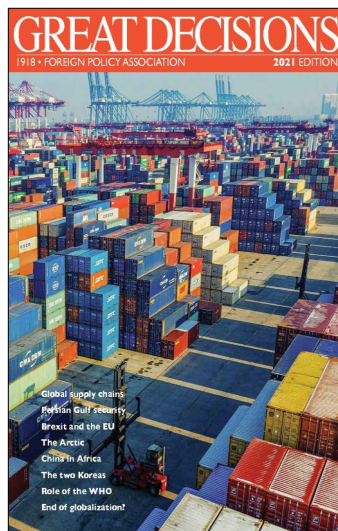
COURSE LEADER: THOM TRAVIS

This course will examine current, often controversial, world events and issues related to U.S. foreign policy. The topics, based on the Great Decisions 2021 booklet of the Foreign Policy Association, are: Global Supply Chains and National Security, Persian Gulf Security Issues, Brexit and the European Union, Struggles Over the Melting Arctic, China's Role in Africa, the Korean Peninsula, Roles of International Organizations in a Global Pandemic, and the End of Globalization?

Depending on events in spring 2021, other topics could include the environment, Russia, the Middle East, and cybersecurity. The course will extend for seven weeks and each class will be two hours. The teaching style will be interactive, with little lecture and ample discussion.

Required materials

for this course:
Students should immediately order *Great Decisions 2021* from pa.org. Either the \$32 print version or the \$23 eBook is fine.



COURSE #474

**A HISTORY OF THE BOOK
AND BOOKBINDING**

MONDAYS 1-3 p.m. 6 SESSIONS

9/20, 9/27, 10/4, 10/11, 10/18, 10/25

Cost: \$50 Class Size: 6-20

COURSE LEADER: NANCY S. WEYANT

LOCATION: SPRING RUN CONF. CENTER

After a review of early types of "book" production (clay tablets, wooden boards, shell, papyrus, vellum and parchment), this course will examine the development of printing, from moveable type by Johannes Gutenberg in the mid-15th century to the use of various kinds of paper (rag and wood pulp), type fonts and evolving binding techniques. Major presses in Europe and America will be explored along with the cultural impact of growing access to printed materials. As allowed with the evolving pandemic rules, the class will visit, either in person or via Zoom, Bucknell's exceptional collection of books by such early presses as the Aldine Press, significant 19th century presses (Kelmscott Press), 20th century presses (Doves) and Lewisburg's own Press of Appletree Alley.

Required materials

for this course: Weyant will leave a collection of resources on the history of the book at the BILL office.

Registered students will be expected to borrow

these texts for two to three days in preparation for the lessons. Additional articles will be emailed to class members, either as attachments to open and read, or via a link for students to access on their own.



COURSE #475

**THE EVOLUTION AND
THE ORIGIN OF RELIGIONS**

TUESDAYS 10-11:30 a.m. 6 SES-

9/21, 9/28, 10/5, 10/12, 10/19, 10/26

Cost: \$50 Class Size: 8-15

**COURSE LEADERS: BILL STAYTON &
DAVE FLETCHER**

LOCATION: SPRING RUN CONF. CENTER

It is a safe assumption that our pre-human ancestors were not religious, that religious thoughts and practices are an emergent property of the human brain. A most interesting question, therefore, is when exactly, during the course of human evolution, did religions emerge?

This question, of course, is but one aspect of the broader subject of the evolution of the human mind, and leads to other, cross-disciplinary enquiries:

- What is it about the human mind that makes morality and religious experience possible?
- Is human nature fundamentally good or bad?
- Why did ancient deities change their sex from female to male?
- Why have some religions revered sex and others made it mostly sinful?

In seeking answers to these questions, we must rely on evidence from various disciplines, especially those of paleoanthropology (the study of the human and pre-human fossil record), neurobiology, archaeology, art, history, literature, psychology, sociology and theology. The class will cross the dividing lines between the sciences and the humanities to explore both biological and cultural aspects of the evolution of mind and religions.

COURSE #476

**WRITING THROUGH
MEMOIR TO MEANING**

TUESDAYS 10-noon 7 SESSIONS

9/21, 9/28, 10/5, 10/12, 10/19, 10/26

Cost: \$50 Class Size: 2-16

**COURSE LEADER: RACHAEL
HUNGERFORD**

**LOCATION: RIVERWOODS SENIOR
LIVING CAMPUS**

This course will offer participants the opportunity to write their own memories and their family's stories and to explore their meaning and organize them into a practical format.

Each week's session will involve:

- discussion of any writing they have done on their own
- prompts to use in-class writing
- writing
- sharing (always optional)
- closure—sharing how the session went and answering questions

Required materials for this course: *Old Friend From Far Away: The Practice of Writing Memoir* by Natalie Goldberg (Atria Books: 2009); used copies are fine.



REGISTRATION FORMS CAN BE FOUND AT END OF THIS CATALOG OR ONLINE.

COURSE #478**RELATIONSHIPS BETWEEN
MATHEMATICS AND MUSIC**

9/21, 9/28, 10/5, 10/12, 10/19, 10/26

TUESDAYS 1-2:30 p.m. 6 SESSIONS**Cost: \$50 Class Size: 4-20****COURSE LEADER: ANN KINDIG****LOCATION: RIVERWOODS SENIOR
LIVING CAMPUS**

How are music and mathematics alike? How does studying the two enrich a person's education? Both math and music begin with a "given" and build upon it. A mathematical equation begins with a number, and a structure or pattern of numbers is added to it. A musical composition begins with a note followed by whole notes, half notes, octaves, and major and minor scales. So, each has a structure or pattern of relationships at its foundation. Mathematics and music present problems or puzzles that need to be solved. The mathematician sees a complex equation and needs to figure out how to solve it. The composer has an idea in mind and needs to determine how to express it in melodic terms. Both disciplines involve emotion.

This course will explore the commonalities of math and music. Participants will tackle math problems together to see the relationships between the numbers and to experience emotion as they work, then delight in the solutions. Kindig will play music to demonstrate the relationships among notes, chords and scales and to invite participants to experience emotional responses to melody.

This will be a course in discovery and discussion, with hands-on activities and instructor demonstration. There will be no required reading, and no special mathematical skills are needed.

Required materials for this course: Students will bring about 50 pennies (or similar items, all of the same size and shape) to the first class. Occasionally, class members will be encouraged to bring an instrument, if they play one.

***How to register
for a class...***

Remember, courses are filled on a first-come, first-served basis. There are two ways you might consider when registering (beginning Aug. 16).

1. **ONLINE**—Go to www.bucknell.edu/lifelonglearning. Click on "registration" or access your account (if you have one set up). Follow the directions to register for your choice of classes.
2. **BY MAIL**—Registration forms that can be mailed to the BILL office are on page 23 of this catalog. All mail-in forms will be opened beginning Aug. 17, in the order they are received.

**A HINT TO FAST
REGISTRATION:**

You must be a BILL member to enroll in a course. If your membership expired on June 30, go online now and renew it before the August registration.

SPECIAL NOTE FOR MEMBERS:

As a member you can sign up for a course to hold your spot; payment isn't due until the week before the first class meeting. (If you mail your registration form, please post-date your check and include a note of your intention to hold payment until that date.)

COURSE #479

**THE DEVIL'S CLOTH:
AN ARTISTIC INVESTIGATION
INTO THE VARIED AND
CONTROVERSIAL STRIPE**

TUESDAYS 1-3 p.m. 6 SESSIONS

9/21, 9/28, 10/5, 10/12, 10/19, 10/26

Cost: \$50 **Class Size:** 3-12
Additional fees apply for art materials

COURSE LEADER: MARGARET SNOW

LOCATION: EAST BUFFALO TOWNSHIP BLDG

From prisoners' suits to the American flag, the stripe has created profound imagery and symbolic meaning throughout history. In this course, students will investigate the unique and often controversial meaning and history of that textile element, the stripe. Students will analyze the origins of the stripe as well as its modern-day transformation. As boundary, as good versus evil, and many other mysterious connotations associated with the stripe will be discussed and researched.

In addition to these investigations, students will plan, develop and execute a final textile artwork that illustrates elements of the unique and at times devilish history of the stripe.

Required materials for this course: There will be a \$15 additional fee for art materials supplied by the instructor.



**BILL MEMBERSHIP BENEFIT:
INTERNATIONAL GROUP TRIPS**

One of the special membership benefits BILL offers is the opportunity for members to be part of superbly planned trips, organized by Overseas Adventure Travel. Below is one woman's personal story about her experience on BILL trips.

When BILL announced it would sponsor two trips to Europe in spring and fall next year, it took me only about five minutes (or just a wee bit longer) to decide to sign up for the fall expedition: two weeks in Sicily.

I'd traveled with a BILL group to Iceland in 2019, and that journey was so enlightening, informative, and just plain fun that I wanted to experience another one.

After signing up for Sicily, I realized that anticipating the trip, though the event was still a long way off, was something of a tonic for the dark and challenging year we've just had.

There are other events to be looked forward to—such as seeing family and friends in person again—but there's something special about planning for the new (or pleasantly remembered) sights and sounds of a faraway place.

The travel company, Overseas Adventure Travel, keeps these groups small, which makes it easy to get acquainted, look after each other, and enjoy enough room on the bus (three seats per person!) to have your own window while relaxing with space to spare.

BILL will also sponsor a two-week trip to Ireland in April. Both of next year's tours were full when this catalog was published, but in just a few months, a new slate of traveling opportunities for BILL members and friends could be posted. When that happens, I might very well be among the first in line.

—Jane C. A. Parker

COURSE #479

**RACE, RELIGION & POLITICS
IN THE AMERICAN
PUBLIC SQUARE**

TUESDAYS 1-3 p.m. 6 SESSIONS

9/21, 9/28, 10/5, 10/12, 10/19, 10/26, 11/2

Cost: \$50 Class Size: 8-15

Note: One Tuesday meeting will be canceled; this class meets only six sessions. Participants will be notified of this date before their first meeting.

COURSE LEADER: LARRY SHINN

LOCATION: SPRING RUN CONF. CENTER

At a time in American history when “Black Lives Matter” and “white supremacy” are daily topics in the United States’s public square (media, community conversations, elections, etc.) few words are as misunderstood or hotly contested as are “race” and “racism.”

Contemporary books such as *White Fragility*, or *Waking Up White*, and *Finding Myself in the Story of Race*, or *How to Be An Antiracist* invite majority “white” citizens in America to consider how “racism” is hard to see or understand from their privileged birth position.

Furthermore, contemporary arguments about the socially constructed category of “race” have in recent years been politicized around color, ethnicity and religion in ways that have invited protests and violence in the public square.



This course invites its participants to consider a new way of thinking about race and systemic racism using Pulitzer Prize-winning writer Isabel Wilkerson’s new book, *Caste: The Origins of Our Discontents* (Random House, 2020).

Using copious examples from U.S. history, Wilkerson introduces us to “eight pillars” of caste and their tentacles that undergird a hierarchical structure built around color that has pervaded American history and culture for more than 400 years.

Rather than seeking to clarify and explain the “radioactive” words race and racism, Wilkerson goes deeper into the structural dimensions of America’s version of caste as a pervasive and persistent systemic reality in the lives of all Americans.

Course participants will be given weekly reading assignments in Wilkerson’s book and will be expected to discuss their ideas openly and fully with respect for opposing ideas and interpretations. The goal is for each person to participate in every class. The seminar is intended as a mutual learning adventure on topics of immense importance to everyone and to their wider communities.

**SIGN UP
FOR
COURSES**

**ONLINE:
AUG. 16
MAIL:
AUG. 17**

COURSE #481

THE ANTHROPOCENE

WEDNESDAYS 10 –11:30 a.m. 6 SESSIONS

9/22, 9/29, 10/6, 10/13, 10/20, 10/27

Cost: \$50 Class Size: 8-15

COURSE LEADER: DAVE FLETCHER

LOCATION: SPRING RUN CONF. CENTER

The Anthropocene, or Human Epoch, dates from the time when humans began to have a significant impact on the ecosystems of the earth. The question is, how great is that impact? Is it approaching such dire proportions that life as we know it is at grave risk, or is what we hear on the subject merely environmentalist hype? Of the various ways in which *Homo sapiens* appears to be disrupting ecosystems, climate change is probably the most widely discussed; less so its twin, ocean acidification. But there are other major issues as well, such as deforestation, industrial pollution, and the effects on ecosystems of invasive species. Other topics will also be considered.

Fletcher does not believe in simply preaching the “Gospel of the Anthropocene,” as it were. Instead, he will ask participants to concentrate on evidence and consider how to evaluate it. Attention will be given to how naysayers can undermine the science involved in probing the diverse problems, as well as what hope there may be for solving those problems.

To promote lively discussions, prepared reading materials will be distributed to participants at least two weeks in advance of each class meeting.

Required materials for this course: Provided by course leader.

COURSE #482

**ISSUES IN THE CRIMINAL
AND CIVIL JUSTICE SYSTEMS**

WEDNESDAYS 10 –11:30 a.m. 7 SESSIONS

9/22, 9/29, 10/6, 10/13, 10/20, 10/27, 11/3

Cost: \$50 Class Size: 8-15

COURSE LEADER: BARRY FEUDALE
(assisted by Tina Marie Bumbulsky)

LOCATION: UNION COUNTY GOVT. CTR.

This course will address matters concerning the use — and abuse — of power and discretion in the Pennsylvania and federal courts.

Participants will look at examples of complex and controversial cases that illustrate the power, wisdom and weaknesses in our system of justice.

Guest lecturers will debate/counterpoint topics and the class will participate in this interactive discussion.

Topics to be included are Racism — America's Original Sin; Vietnam — forgotten war/forgotten veterans; a contested will that resulted in exhumation of the body; the tragedy of suicide in college; union/tenure issues in higher education; an early LGBTQ+ case addressing transgender issues; the Me Too movement; and Sandusky/Spanier issues involving sexism,

sexual and their coverup. The actual cases and relevant articles will be provided by the course leader.



Feudale's class

WEDNESDAY

COURSE #483

AN INTRODUCTION TO LEONARDO da VINCI

WEDNESDAYS 1-2:30 p.m. 6 SESSIONS

9/22, 9/29, 10/6, 10/13, 10/20, 10/27

Cost: \$50 Class Size: 5-20

COURSE LEADER: CHRISTINE SPERLING

LOCATION: SPRING RUN CONF. CENTER

To try to consider Leonardi da Vinci's entire oeuvre collectively in just six weeks would be a mistake. Instead, the course will examine particular aspects of his life and art through a selection of his works.

Class members will meet Leonardo as a student within his contributions to Verrocchio's painting *The Baptism of Christ*. They will find Leonardo as an

observer of nature and an inventor in his notebooks. A recent cleaning of his *Adoration of the Magi*, with its technical information, will provide the opportunity to examine his unique painting practices.

Sperling will supply information regarding available books and other resources, including internet resources, before the course begins. She will give other suggestions before class meetings. Students are free to be involved as much as their time, interests and curiosity dictate.



COURSE #484

THE LITERATURE OF EDITH WHARTON

WEDNESDAYS 1-3 p.m. 6 SESSIONS

9/22, 9/29, 10/6, 10/13, 10/20, 10/27

Cost: \$50 Class Size: 3-8

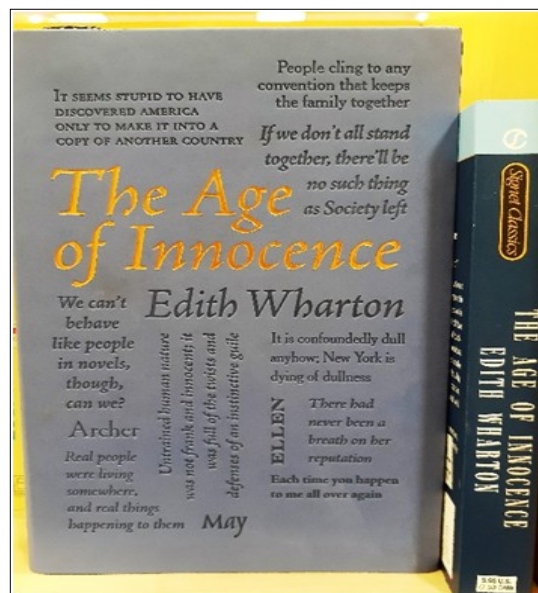
COURSE LEADER: LOGAN CONEY

LOCATION: BILL OFFICE CLASSROOM #1

Edith Wharton was born during the Gilded Age into a wealthy and socially prominent family. As such, she was blessed with an insider's knowledge of the upper-class aristocracy of New York.

The author of at least 85 short stories in addition to novels and novellas, Wharton was the first woman to win the Pulitzer Prize for Literature for *The Age of Innocence* in 1921.

Through in-depth reading and discussion, this course will explore the characters who inhabit Wharton's writing, their struggles, behaviors and roles they play in a world of wealth, ambition and social position.



COURSE #485**WOMEN FLOURISHING
AS WE AGE****WEDNESDAYS 1:30-3 p.m. 6 SESSIONS**10/6, 10/13, 10/20, 10/27, 11/3, 11/10 **BY ZOOM****Cost: \$50 Class Size: 8 -16****COURSE LEADER: GENIE GERDES**

This course will focus on the issues for aging women raised in Mary Pipher's 2019 book, *Women Rowing North: Navigating Life's Currents and Flourishing as We Age*.

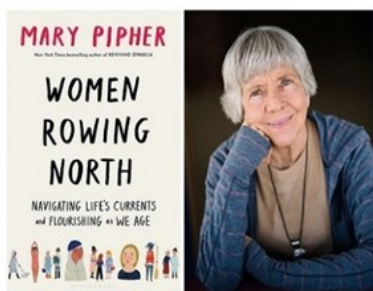
Pipher identifies challenges (such as physical decline, caregiving and loneliness), skills (such as understanding ourselves, creating community and crafting our own narratives) and important relationships with family and others on our journey.

Although many difficult issues are addressed, the book is uplifting rather than depressing.

Discussions will be informed by participants' personal experiences as well as Pipher's insights as a clinical psychologist.

Advice of a more physical nature will come from Twyla Tharp's 2019 book, *Keep It Moving: Lessons for the Rest of Your Life*. Both authors urge making intentional choices and taking control of our lives.

Required materials for this course *Women Rowing North: Navigating Life's Currents and Flourishing as We Age*, by Mary Pipher. Other articles will be distributed by email

**COURSE #486****WEST AFRICAN
DRUMMING TRADITIONS****THURSDAYS 10-11:30 a.m. 8 SESSIONS**

9/23, 9/30, 10/7, 10/14, 10/21, 10/28, 11/4, 11/11

Cost: \$50 Class Size: 7-18**COURSE LEADER: HOPE W. KOPF****LOCATION: EAST BUFFALO TOWNSHIP BUILDING**

This fun course will expose participants to the joys of West African drumming. They will learn basic techniques on the djembe and dununs. They'll play rhythms from several West African countries and learn how the rhythms are/were used in the culture.



They will also be introduced to many other percussion instruments, including talking drums, krin, balafon, bolon, shekere, aslatua and gankoqui. **No prior experience is necessary. All drums will be provided.**

NOTE: Regarding COVID: Those who have concerns about playing surfaces will be able to keep the same djembe for the entirety of the course. When dununs are played, sticks that can easily be sterilized will be used.

COURSE #471B**HUMANS AND MONSTERS:
READING FRANKENSTEIN****THURSDAYS 10-11:30 a.m. 7 SESSIONS**

9/23, 9/30, 10/7, 10/14, 10/21, 10/28, 11/4

Cost: \$50 Class Size: 10-20 BY ZOOM**See page 8 for details.**

THURSDAY

COURSE #487

**THE NORTHWEST COAST
INDIAN TRIBES**

THURSDAYS 10 a.m.-noon 5 SESSIONS

9/23, 9/30, 10/7, 10/14, 10/21

Cost: \$50 Class Size: 10-20

COURSE LEADER: TOM GREAVES

LOCATION: SPRING RUN CONF. CENTER

The tribes of the Pacific Northwest coast of Washington State, British Columbia and southern Alaska were and are renowned for their totem poles and vibrant cultures, expressed in their sophisticated, vivid, immediately recognizable art style, ingenious woodwork, textiles, hierarchically organized society, omnipresent spirit world, masks, and rich ceremonial life, especially expressed through the potlatch.

This course will introduce these remarkable societies as they were before contact with European trade economies and afterward, when the infusion of trade money stimulated dramatic new highs in artistic creativity. These societies remain vigorous and strong today, with their cultures and artistry developing striking new forms.

Required materials for this course: *Tradition and Change on the Northwest Coast*, by Ruth Kirk (University of Washington Press: 1986). Available used from most online book sellers.



COURSE #488

**A FRESH LOOK AT
20TH CENTURY MUSIC**

THURSDAYS 1-2:30 p.m. 6 SESSIONS

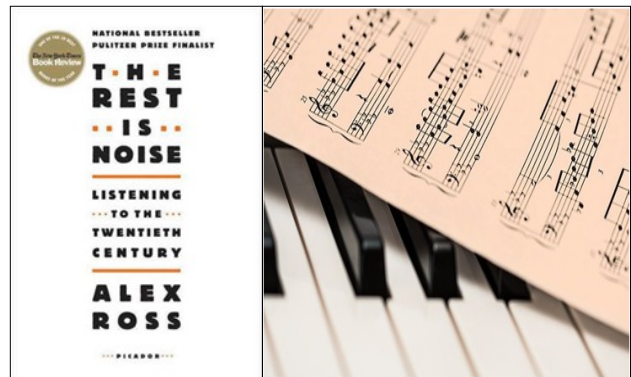
9/23, 9/30, 10/7, 10/14, 10/21, 10/28

Cost: \$50 Class Size: 6-25

COURSE LEADER: GARY BOERCKEL

LOCATION: SPRING RUN CONF. CENTER

This music history survey course will use *New Yorker* music critic Alex Ross' study of 20th century music titled *The Rest Is Noise* (2007) as text. Class members will read the first six chapters (to p. 212) and hear and discuss music by Richard Strauss and Mahler; Schoenberg and Debussy; Stravinsky and Ravel; Ives, Gershwin, Copland and Ellington; Sibelius; Hindemith and Weill.



Required materials for this course: *The Rest Is Noise*, by Alex Ross (Farrar, Straus, and Giroux: 2007). Students should read the Preface and Chapter 1 for the first class. Available new, used and in eBook form.



COURSE #489

**UNLOCKING THE MYSTERIES
OF EARTHQUAKES**

THURSDAYS	1-3 p.m.	6 SESSIONS
9/23, 9/30, 10/7, 10/14, 10/21, 10/28		
Cost: \$50 Class Size: 5-15		

COURSE LEADER: GARY NOTTIS

LOCATION: BILL OFFICE CLASSROOM #1

Earthquakes have been the source of myth and legend, curiosity and fear. Earthquake events occur every day, throughout the world, and most are never felt. But some can be catastrophic. Could a devastating earthquake happen here?

This six-week course will unlock the mysteries of earthquakes, including their origins, how they are detected and described, efforts to prepare for them and their collateral impact, and the promise of earthquake prediction and forecasting.

In addition, participants will look at earthquakes of the past, with an emphasis on Pennsylvania and the northeastern United States, as well as the possibility of recurrence.

Each class will address a specific topic through lecture, Power Point presentations, and hands-on activities.



COURSE #490

**LET'S LEARN SOME SCIENCE
HANDS-ON!**

THURSDAYS	3-4:30 p.m.	6 SESSIONS
10/7, 10/14, 10/21, 10/28, 11/4, 11/11		
Cost: \$50 Class Size: 5-15		

COURSE LEADER: PAM KREIS

LOCATION: SPRING RUN CONF. CENTER

The best way to learn about something is by experiencing it.

Science is no different.



Understanding biology doesn't have to be intimidating if encountering it through lecture and discussion, then learning even more through fun, hands-on activities with an enthusiastic guide. In this six-week course, Kreis will introduce a series of topics, then give students the opportunity to play with an aspect of the topic through the materials she provides.

In the first meeting, course members will learn about leaves and how to identify them by comparing, contrasting and grouping them. Practice comes in the following week. Over the next two sessions, they will examine minerals. How are they used? What can be learned about their similarities and differences? Participants will view and handle samples and observe some of their more fascinating properties with Kreis' planned activities.

Finally, the class will focus on DNA. Kreis will explain the basics of DNA structure and its importance to living organisms. At the final meeting, students will extract DNA from strawberries.

COURSE LISTINGS & DESCRIPTIONS

FRIDAY

COURSE #491

HISTORY OF AMERICAN HOME COOKING: From Johnny Cakes to Sheet Pan Dinners

FRIDAYS	10-11:30 a.m.	6 SESSIONS
9/23, 9/30, 10/7, 10/14, 10/21, 10/28		
Cost: \$50 Class Size: 7-10		

COURSE LEADER: MARY ZIMMERMAN

LOCATION: MARY'S HOME, LEWISBURG

The class will look at the emergence of a uniquely and distinctly American cuisine by studying the intersection of new influences and conditions in the New World, including technology and health concerns. The course will also examine the training of home cooks and resources available to them.

Participants will be asked to bring cookbooks to class and to consult online cookbook collections to examine how cooking has responded to different influences, such as the development of commercial canning, and historical conditions, such as rationing during World War II. The final class will be devoted to the modern influence of restaurant cooking on home cooking.

The course will combine lecture and discussion; there may be an option for participants to cook some of the recipes at home and bring the results to class.

This class will meet at the course leader's home in Lewisburg. Participants will be contacted with special instructions and her address.



BILL CANCELLATION POLICIES

Occasionally a BILL course or Special Presentation may have to be canceled.

IN CASE OF SEVERE WEATHER AND OTHER EMERGENCIES:

Classes and special presentations will be canceled when the Lewisburg Area School District closes due to inclement weather. BILL classes will be held as scheduled when the school district is running on a delayed opening schedule. Be alert to the potential for mid-day cancellations and check information sources accordingly. Postings: www.lasd.us, television: WNEP or WYOU, radio: WKOK.

BY A COURSE LEADER:

Participants will be notified by email or telephone if a class session is canceled. Makeup dates and times will be arranged on an individual basis.

BY A SPECIAL PRESENTATIONS SPEAKER:

If a speaker is unable to meet his or her commitment, BILL may cancel the session if adequate notice can be given and we cannot schedule a substitute speaker.

SCHEDULE SUBJECT TO CHANGE:

BILL reserves the right to limit class size and to cancel classes if there is insufficient enrollment. A specific class schedule may be altered due to unforeseen circumstances. The ability to offer classes in person may depend on public health considerations, including decisions of Bucknell University or governmental authorities.

BIOGRAPHIES

COURSE LEADERS

A QUICK LOOK AT BILL'S TALENTED, DEDICATED VOLUNTEER COURSE LEADERS

GARY BOERCKEL is professor emeritus of music at Lycoming College, where he taught music and music history for 35 years until his retirement in 2012; he continues as director of the Lycoming Scholar program. He is host of the WVIA radio show *Music to My Ears*, offering local listeners a weekly hour of classical music.

LOGAN CONEY, retired certified teacher of secondary English, has spent 20 years in education in various capacities. Her experience extends to teaching reading and English in alternative educational settings, middle school and high school, including college placement and advanced placement courses.

BARRY FEUDALE is a retired judge of the Court of Common Pleas in Northumberland County and a visiting judge throughout Pennsylvania. He served as the child welfare solicitor and public defender in Northumberland County as well as presiding judge for grand juries investigating organized crime and public corruption in Pennsylvania. Feudale presided over the 2012 grand jury investigating the child sexual abuse and coverup involving Jerry Sandusky and other Penn State University officials.

DAVID FLETCHER is professor emeritus of biology and recipient of a teaching award from Bucknell. He taught at the University of Georgia and the University of Natal in South Africa, and headed the Bee Research Laboratory in Pretoria. A frequent panelist, speaker and presenter in university lectures on the topic of science and religion, he co-taught several popular interdisciplinary courses during his tenure at Bucknell.

GENIE GERDES is professor emerita of psychology and dean emerita of Bucknell's College of Arts & Sciences. She taught courses on social psychology and the psychology of women as well as courses on higher education. Her research focused on discrimination against women and stresses for women in traditionally male work roles, particularly leadership. She is chair of the BILL steering committee.

TOM GREAVES is professor emeritus of anthropology at Bucknell; he retired in 2010. He has done extensive research in South America and among North American tribes, writing numerous research articles and editing four books along the way. Greaves grew up in Seattle and maintained a lifelong interest in the cultures of the Pacific Northwest tribes, the subject of this course.

RACHAEL HUNGERFORD is professor emerita of education and former chair at Lycoming College, where she taught classes in English, women's studies and education. She is a certified Journal to the Self instructor and a memoir-writing teacher. Hungerford has led workshops for women's retreats, the YWCA, the Salvation Army, Penn Tech, Diakon Family Life Services, the James V. Brown Library and others. She continues to offer private writing instruction in her home.

ANN KINDIG is a mathematician and strings musician. She taught mathematics for many years in the Lewisburg school system. She is an accomplished cellist, playing in regional orchestras and quartets, including the Bucknell Orchestra.

HOPE W. KOPF is a retired music teacher from the Shikellamy public school district. In the early 2000s, she began an intensive personal study of hand drumming, indigenous culture in West Africa, and drum circle facilitation. Kopf studied under several masters: Arthur Hull, Bountarabi Leftwich, Fodé Camara, Bolakada Conde and others. She has led West African Drum ensembles, taught for the Griot Institute for the Study of Black Lives & Cultures at Bucknell, and performs at special events and festivals.

PAM KREIS has worked as a medical technologist, specializing in microbiology, for more than 40 years. She taught middle and high school science courses in both the traditional classroom and online for more than a decade.

GARY NOTTIS is a retired geologist from the New York State Geological Survey. He has spent decades studying earthquakes and is the author of several publications on the subject and editor of *Epicenters of Northeastern United States and Southeastern Canada, Onshore and Offshore; Time Period 1534-1980*. Nottis remains a recognized authority on the historical earthquakes of eastern North America.

LARRY SHINN is a retired president of Berea College in Kentucky. Before that, he was academic vice president and former dean at Bucknell and professor of religion at Oberlin College. Shinn is the author of numerous books and articles on the religions of South Asia and on shared governance and the liberal arts in higher education. His most recent book is *Strategic Thinking and Planning in Higher Education: A Focus on the Future* (2017).

BIOGRAPHIES (cont. from page 20)

A QUICK LOOK AT BILL'S TALENTED, DEDICATED VOLUNTEER COURSE LEADERS

MARGARET SNOW is a textile artist and a certified K-12 art educator. She has taught art in different Pennsylvania school settings, including many art-related courses for the BILL program. Snow heads the floral department at the Weis store in Lewisburg.

CHRISTINE SPERLING is a professor emerita and former chair of the Department of Art & Art History at Bloomsburg University, where she organized and led 12 student trips to Italy. She has published in a number of journals including the *Journal of the Courtauld and Warburg Institutes* and *The Burlington Magazine*. Sperling continues to publish and speak on her scholarship in the art of the Italian Renaissance.

BILL STAYTON is a psychologist, sexologist, certified marriage and family therapist, and retired rostered church leader. After serving as pastor, hospital chaplain and seminary faculty member, he was a professor at the University of Pennsylvania, Widener University and the Morehouse School of Medicine. He received a Gold Medal Award from the World Association for Sexual Health for promoting dialogue with religion and medicine about sexuality.

THOM TRAVIS is professor emeritus of international relations and political science at Bucknell, where he taught for 33 years. He has lived in Italy, India and Russia; taught at universities in India, Russia and Uganda; and visited 114 countries. He has been a BILL course leader since 2010.

KERRY WALTERS is professor emeritus of philosophy at Gettysburg College and an award-winning author and editor of 45 books and hundreds of articles. His most recent books are a biography of Harriet Tubman and an anthology of the writings of American abolitionists. He writes a fortnightly column, "Faith Matters" for *The Daily Item*.

NANCY S. WEYANT is a retired librarian with degrees in library science, English literature and art history. She is recognized as the principal bibliographer on Elizabeth Gaskell, having published two annotated bibliographies of English-language scholarship and maintaining a web site that updates that record of Gaskell scholarship (<http://www.nancyweyant.com/>). She has taught comprehensive courses on the history of the book at both the undergraduate and graduate levels as well as focused sessions on Victorian book production.

MARY ZIMMERMAN is a former history professor from Northern Virginia Community College and holds degrees from Carleton College and Vanderbilt University. She has received a number of teaching awards and presented the Legacy Lecture the year of her retirement. Zimmerman served as president of the Lewisburg League of Women Voters and is a frequent guest lecturer on topics of American, women's and cultural history.

HOW TO REGISTER

Courses are filled on a first-come, first-served basis.

Complete and return the form on page 23 or register online at
www.bucknell.edu/LifelongLearning

ONLINE OPENS: Mon., Aug. 16

PHONE/MAIL-IN: Tues., Aug. 17

Grow Your Mind!

RENEW YOUR MEMBERSHIP NOW TO SAVE TIME

To register for classes, you must be a BILL member.

**You can sign up for membership and classes online
or use the form on the next page.**

Your class registration online will be easier if you go to www.bucknell.edu/lifelonglearning several days before you sign up for courses. On the page, scroll down and click on “Membership and Course Registration.” You’ll be taken to another page where you can click on “Membership” at the top left of the page. Follow the simple directions.

If you are already a member and want to renew your membership, click on “Login” at the top right. You’ll be taken to your account where you can easily renew your membership and/or sign up for classes.

***BECOME
A
BILL
MEMBER
TODAY***

**REGISTER FOR
CLASSES
ONLINE
BEGINNING
AUG. 16**

**OR MAIL THE
FORM ON THE
NEXT PAGE.**

**MAILED FORMS
ARE OPENED
BEGINNING
AUG. 17.**

**Questions?
Call the
BILL office:
570-522-0105**

BILL POLICIES

COURSE REGISTRATION

Courses are filled on a first-come, first-served basis with the provision that online registrations are instantaneous beginning Aug. 16, while registrations by mail or phone will be processed in the order they are received, beginning Aug. 17. For the best selection, register right away when online and phone registrations open, or mail the enclosed membership and course registration as early as possible. Renewing (or starting) your membership before course registration will expedite online registration. Enrollment remains open until classes begin. Waiting lists are kept for filled courses and are used on a first-come, first-served basis if space becomes available.

REFUND POLICY

Course registration fees will be returned if a request is made before the start of the first class or if space in desired classes is unavailable. The membership fee is generally not refundable, but a refund or extension will be considered in cases where a member has not been able to enroll in courses.

EXPECTATIONS

Members are expected to treat each other with respect. Course leaders and others in charge of BILL events are expected to maintain an open and respectful learning environment. BILL reserves the right to revoke the membership of anyone whose behavior is disruptive or inappropriate.

PHOTOGRAPHS

Registering to become a member of this Institute gives us permission to use any photos that include you in our print or electronic publications. If you do not want us to use your photograph, please notify the photographer at the event.

COMMUNICATION AND COMPUTER USE

If you supply an email address, we will use it to send news, calendars of events, newsletters and invitations. If you do not supply an email address, we will, as much as possible, use the postal service to send the same information. If you do not currently have an email account, we can assist you in setting up a free one. If you do not have computer access, the Union County Library System has computers that are free to use.

Note: To ensure BILL emails do not go to your spam folder, make sure the following email address is recorded in your online address book/contacts:
lifelonglearning@bucknell.edu.

MEMBERSHIP & COURSE REGISTRATION FORMS

One form per person

Name _____

Preferred name/salutation _____

Address _____

City _____

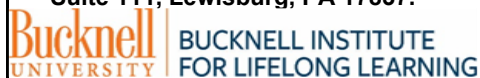
State _____ Zip _____

Phone(s) _____

Email _____

I am a ☐ NEW member ☐ RENEWING member

Please make check payable to **BUCKNELL UNIVERSITY** (You may add BILL to the memo line, if you like. Send completed form and payment to **Bucknell Institute for Lifelong Learning, 115 Farley Circle, Suite 111, Lewisburg, PA 17837.**



MEMBERSHIP FEE

(new or renewing members only)

☐ \$60 2021-2022 academic yr.
(7/1/2021-6/30/2022) \$ _____

☐ \$0 first-time trial membership
(8/17/2021-12/31/2021) \$ _____

☐ \$500 lifetime membership \$ _____
(no expiration)

COURSE REGISTRATION

You may register for up to two courses by mail. Additional registration may be available within two weeks of the start of class. Please check with the office if you would like to take a 3rd or 4th class.

1st Course no. _____ \$ _____
Alternate _____

2nd Course no. _____ \$ _____
Alternate: _____

Optional tax-deductible donation \$ _____

TOTAL ENCLOSED \$ _____

Name _____

Preferred name/salutation _____

Address _____

City _____

State _____ Zip _____

Phone(s) _____

Email _____

I am a ☐ NEW member ☐ RENEWING member

Please make check payable to **BUCKNELL UNIVERSITY** (You may add BILL to the memo line, if you like. Send completed form and payment to **Bucknell Institute for Lifelong Learning, 115 Farley Circle, Suite 111, Lewisburg, PA 17837.**



MEMBERSHIP FEE

(new or renewing members only)

☐ \$60 2021-2022 academic yr.
(7/1/2021-6/30/2022) \$ _____

☐ \$0 first-time trial membership
(8/17/2021-12/31/2021) \$ _____

☐ \$500 lifetime membership \$ _____
(no expiration)

COURSE REGISTRATION

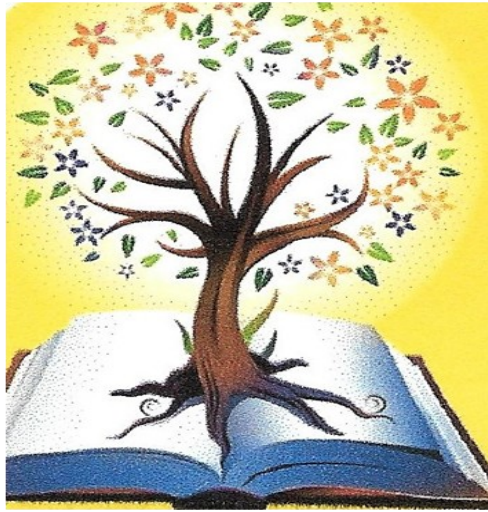
You may register for up to two courses by mail. Additional registration may be available within two weeks of the start of class. Please check with the office if you would like to take a 3rd or 4th class.

1st Course no. _____ \$ _____
Alternate _____

2nd Course no. _____ \$ _____
Alternate: _____

Optional tax-deductible donation \$ _____

TOTAL ENCLOSED \$ _____



Grow Your Mind!

BILL VOLUNTEERS

Bucknell Institute for Lifelong Learning (BILL) is a self-sustaining program and relies on the help of volunteers. Many of our volunteers serve in more than one capacity, such as leading a course and being part of a committee. Some volunteers pitch in with short-term needs such as delivering catalogs or stuffing envelopes. Volunteers contribute to the vibrant organization that BILL has become, which is only possible thanks to this kind of participation.

Steering Committee

Chair: Genie Gerdes
Vice-chair: Elaine Hopkins
Pam Benfer
Janice Butler
Mary Jane Elser
Margaret Greaves
Bob Kallin
Joe Koletar
Bill Lahner
Tony Ludovico
Becky Perez
Thom Travis
Russ Wells

Curriculum Committee

Chair: Thom Travis
Margaret Greaves
Elaine Hopkins
Patricia Longley
Matt Silberman
Mary Zimmerman

Special Presentations Committee

Chair: Janice Butler
Elaine Hopkins
Ann Longanbach
Katharyn Nottis
David Schoepf
Peter Stryker
Martha Verbrugge
Russ Wells

Communications Committee

Chair: Mary Jane Elser
Bill Brobst
Nancy Craig
Hope W. Kopf
Jane Parker
Karen Payne

Development Committee

Chair: Bob Kallin
Pam Benfer
Joe Koletar

Bucknell Institute for Lifelong Learning
115 Farley Circle Suite 111
Lewisburg, PA 17837