

2021

CLASS PROFILE

APPLICANT, ADMIT & ENROLLEE POOL

10,253
APPLICANTS

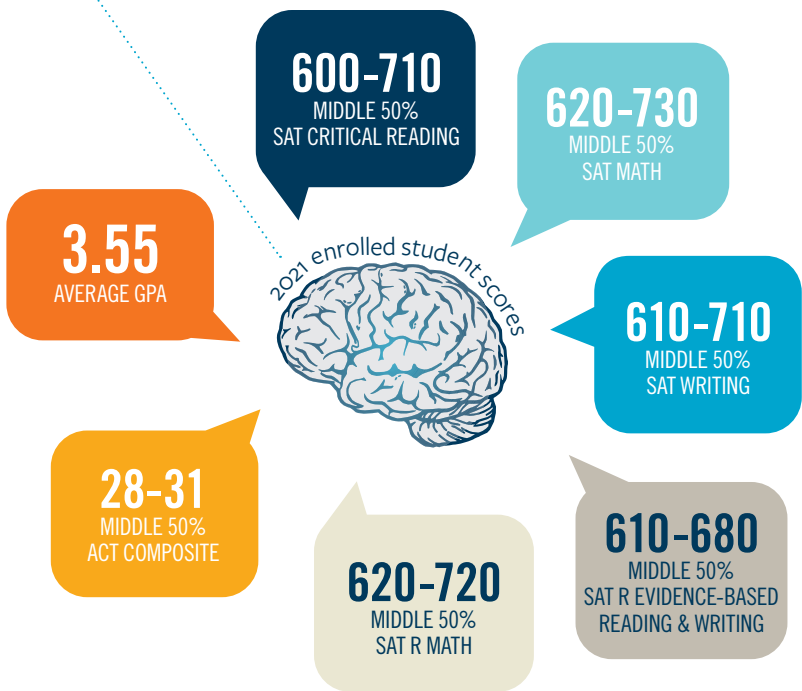
3,187
ADMITTED
31.1% ADMITTANCE RATE

973
ENROLLED
30.5% YIELD RATE
(ADMITTED STUDENTS WHO ENROLLED)



MEET THE CLASS OF
2021

ACADEMICS



- MERIT SCHOLARSHIPS**
In the Class of 2021, Bucknell welcomes:
- 30 Arts Merit Scholars
 - 8 Bucknell Women in Science & Engineering (B-WISE) Scholars
 - 79 Dean's Scholars
 - 1 FIRST Scholar
 - 30 Posse Scholars
 - 24 Presidential Fellows
 - 1 PricewaterhouseCoopers Scholar

	APPLIED	ADMITTED	ENROLLED
Arts & Humanities	610	265	70
Engineering	2,995	737	187
Physical & Natural Sciences	2,388	875	207
Management	1,531	456	148
Social Sciences	1,564	469	175
Undecided	1,165	385	186
TOTAL	10,253	3,187	973

INTERESTS, ACCOMPLISHMENTS & COOL FACTS

- Delegate to the European Youth Parliament's economics committee
- Helped create a wave-making device to reduce mosquito breeding in stagnant water
- Traveled to Peru to study the rainforest ecosystem and teach locals about waste management
- Teaches children with disabilities how to snowboard
- Taught English in a Burmese village as a high school junior and founded a nonprofit to provide students there with backpacks
- Ran five marathons
- Wrote a mathematics textbook while teaching English, math and science to children in rural India
- Started a school club to teach English to children in the Dominican Republic via Skype
- Interned with HBO and worked on its Vinyl series
- Conducted computational research in electrodynamics at Yale

FINANCIAL AID

52%
of undergraduate students receive financial aid from Bucknell.

62%
of undergraduate students receive financial aid of some form.

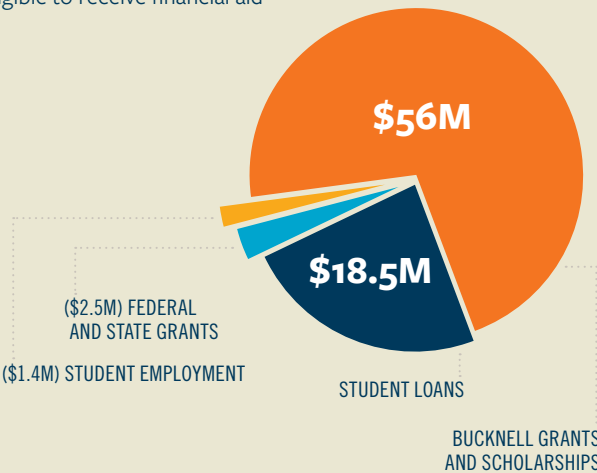
\$37,500/YR.

AVERAGE TOTAL NEED-BASED PACKAGE FOR A STUDENT
including grants, scholarships, loans and student employment
(Class of 2021)

AVERAGE TOTAL FEDERAL STUDENT LOAN INDEBTEDNESS
\$22,600

upon graduation for Bucknell graduates who borrowed federal loans
(Class of 2017 graduates)

BUCKNELL'S 2017-18 FINANCIAL AID
awarded to all undergraduates who were eligible to receive financial aid

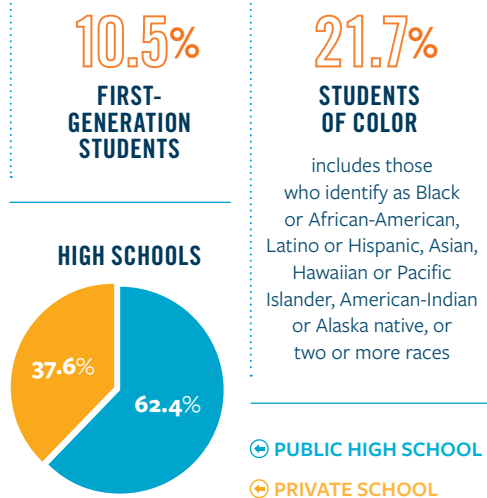
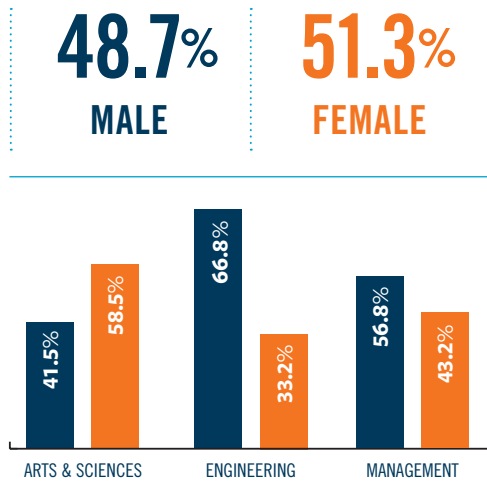


TO APPLY FOR FINANCIAL AID FROM BUCKNELL

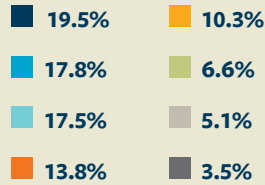
Complete a **CSS PROFILE** online at student.collegeboard.org/profile by November 15 for Early Decision I consideration and by January 15 for Regular Decision and Early Decision II consideration.

See bucknell.edu/FinancialAid for the full set of requirements.

CLASS DIVERSITY



The **Class of 2021** represents **31 states** and the **District of Columbia**.



5.9% Outside the U.S.

CLASS OF 2021 INTERNATIONAL STUDENTS



REPRESENT
49
COUNTRIES

Argentina, Australia, Barbados, Belarus, Brazil, Canada, Chile, China, Colombia, Dominican Republic, Ecuador, Egypt, El Salvador, Ethiopia, France, Georgia, Germany, India, Iran, Ireland, Israel, Italy, Japan, Jordan, Kenya, Lithuania, Malawi, Myanmar, Nepal, Netherlands, New Zealand, Nigeria, Pakistan, Philippines, Poland, Portugal, Rwanda, Saudi Arabia, Singapore, Slovenia, South Korea, Spain, Switzerland, Thailand, United Arab Emirates, United Kingdom, Uruguay, Venezuela, Viet Nam

6.1% NON-U.S. CITIZENS

7.3% DUAL CITIZENS AND PERMANENT RESIDENTS



DATA AS OF SEPT. 5, 2017

Bucknell
UNIVERSITY

Admissions

Bucknell University
One Dent Drive
Lewisburg, PA 17837, USA

570-577-3000
admissions@bucknell.edu



@BUCKNELLU



REV05/18