



2018-19 FACT BOOK



Bucknell
UNIVERSITY | Institutional
Research & Planning

bucknell.edu



FACT BOOK 2018 - 19

Table of Contents

Introduction	1
Foreword	1
Mission of Bucknell University	2
Vision of Bucknell University	2
Brief History	3
Trustees	4
Senior Leadership Team	6
Academic Divisions	6
Accreditation	7
University Organizational Chart	8
Provost Area Organizational Chart	9
Admissions	11
Enrollment	17
Completions by Field of Study	27
Academics, Co-Curricular and Extracurricular Activities	31
Student Success	37
Faculty & Staff	43
Finance	53
Definitions	57



BUCKNELL UNIVERSITY FACT BOOK

FOREWORD

The Office of Institutional Research & Planning is pleased to present the 2018-2019 Bucknell University Fact Book. This book is intended as a single, comprehensive, readily accessible and accurate source of information about Bucknell University, and it provides answers to many commonly asked questions about our institution and the people who are part of it, including trends over time.

The 2018-2019 Fact Book reflects Bucknell's commitment to transparency and accountability, as well as our continuing effort to improve the quality and accessibility of information about our university to internal and external stakeholders. Given the increasing external demand for accurate and readily accessible information, as well as the internal shift in culture toward data-informed decision making at all levels of our institution, we continued to update the existing dashboards and created several new ones that complement the print edition of the Fact Book. The dashboards have added functionality, essentially allowing the stakeholders to conduct real-time analyses to answer specific questions, and it is our hope that they will make the information both more accessible and easier to use. Both the print Fact Book and the dashboards are available at www.bucknell.edu/IR.

As in the previous years, we would like to extend our sincere appreciation to all offices that contributed to the creation of the Fact Book by providing us with the requested data as well as sharing their expertise in other ways. We hope that you will find the Fact Book informative and useful. Please let us know if you have any comments or suggestions about how we could improve either the print version or the new dashboard edition in the future.

All the best,
Kevork Horissian



INSTITUTIONAL RESEARCH & PLANNING STAFF

Kevork Horissian, *Assistant Provost of Institutional Research & Assessment*

Rita Liu, *Assistant Director of Institutional Research*

Agnes Jasinska, *Assessment Coordinator*

Laura Winger, *Reports Coordinator/Analyst*

BY WAY
of
BUCKNELL

THE MISSION OF BUCKNELL UNIVERSITY

Bucknell is a unique national university where liberal arts and professional programs complement each other. Bucknell educates students for a lifetime of critical thinking and strong leadership characterized by continued intellectual exploration, creativity, and imagination. A Bucknell education enables students to interact daily with faculty who exemplify a passion for learning and a dedication to teaching and scholarship. Bucknell fosters a residential, co-curricular environment in which students develop intellectual maturity, personal conviction and strength of character, informed by a deep understanding of different cultures and diverse perspectives. Bucknell seeks to educate our students to serve the common good and to promote justice in ways sensitive to the moral and ethical dimensions of life.

Bucknell's rich history and heritage will influence its planning for the future. Bucknell's potential as an institution of higher learning extends beyond that of a traditional liberal arts college by virtue of its larger size and expansive programs. The University's broader spectrum of disciplines and courses of study within a diverse and active residential campus community enhance the quality of all aspects of the undergraduate experience, both in and out of the classroom.

THE VISION OF BUCKNELL UNIVERSITY

To provide students with the premier undergraduate experience in American higher education.

Bucknell will offer an academic program that is challenging and distinctive, with the capacity to prepare its graduates for successful personal, professional, and civic lives in the 21st century. Bucknell's residential life and co-curricular activities will fully support its academic program. This integrated environment for student learning and growth, enhanced by diversity in all its forms, will build connections to a global society. In doing so, Bucknell will emerge from a place of strength to a position of preeminence within American higher education.



A brief history of **BUCKNELL UNIVERSITY**

Bucknell University was founded in 1846 by a group of Baptists who deemed it “desirable that a Literary Institution should be established in Central Pennsylvania, embracing a High School for male pupils, another for females, a College and also a Theological Institution.”

The charter for the University at Lewisburg was granted by the Legislature of Pennsylvania and approved by the governor on Feb. 5, 1846. Classes were held in the basement of the First Baptist Church in Lewisburg.

In 1850, the University moved into Taylor Hall, the first building completed on campus, which housed both women and men’s studies until the opening of the Female Institute in 1852. The school’s first commencement was held Aug. 20, 1851, for a graduation class of seven men.

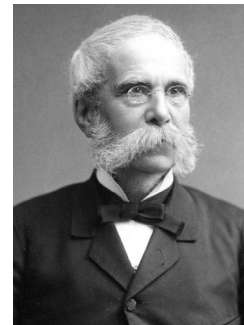
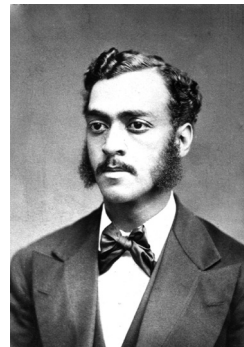
The Female Institute began instruction in 1852, with college courses being opened to women in 1883. The first woman graduate was Chella Scott, who received a bachelor’s degree with honors in 1885, and spoke at her commencement.

In 1875, Edward McKnight Brawley was Bucknell’s first African-American graduate, receiving a bachelor’s and master’s degree. He served as president of what became Selma University and Morris College, which he helped to found. Bucknell’s first international student was Maung Shaw Loo, who came from what is now called Myanmar as the first Burmese native to study in the United States; he graduated in 1864 and served many years as a physician in his home country.

The University at Lewisburg was renamed in 1886 in honor of William Bucknell, a charter member of the Board of Trustees and a major benefactor who challenged the board to match his donation. Mr. Bucknell also funded the University’s first scholarship, the first prizes for female students and the building of Commencement Hall, a chapel now named Bucknell Hall and home to the Stadler Center for Poetry.

Today, Bucknell is the nation’s largest private liberal arts university with 3,500 undergraduates on a 450-acre campus. As a highly selective private university, Bucknell offers a personalized and comprehensive liberal arts education to exceptionally talented students from across the U.S. and around the world. It offers academic programs in the arts, engineering, humanities, management, and social and natural sciences as well as the creative and performing arts; facilities for professional-grade instrumentation and spaces for digital and collaborative learning; and broad opportunities outside of class.

Bucknell University is now much more than a literary institution: It is a place that prepares students for success in an increasingly complex and interconnected global society.



.....



.....

TRUSTEES OF BUCKNELL UNIVERSITY, JULY 1, 2018

NAME	TERM EXPIRES (JUNE 30)	AFFILIATIONS
Christopher J. O'Brien '80 Chair, Board of Trustees Chair, Executive Committee	2021	President, O'Brien Capital Advisors
Stephen P. Holmes '79 Vice Chair, Board of Trustees Chair, Executive Resources Subcommittee	2022	Chairman, Wyndham Hotels & Resorts & Wyndham Destinations
Harriet Edelman '77 Vice Chair, Board of Trustees Chair, Campus Life Committee	2021	Vice Chairman, Emigrant Savings Bank
Steven A. Kohn '81 Secretary, Board of Trustees	2020	President and Vice Chairman, Cushman and Wakefield Equity, Debt & Structured Finance
Dawn M. Becker '85 Vice Chair, Audit, Compliance & Risk Management committee	2021	EVP – General Counsel & Secretary, Federal Realty Investment Trust
John C. Bravman		President, Bucknell University
Juanita Ora Luckett Brown	2020	President, Brown Business Consulting, LLC
Robert A. Chrencik '73	2023	President and CEO, University of Maryland Medical Center
Laureen R. Costa '90	2023	Managing Director, Private Equity Group
Lisa Cadette Detwiler	2022	Realtor, The Corcoran Group
Brenda Earl '81 Vice Chair, Investments Committee	2019	Principal, Earl Investments
Jane Taylor Elfers '83 Chair, Nominating & Governance Committee	2023	President and CEO, The Children's Place, Inc.
David T. Feinberg Vice Chair, Academic Affairs Committee Chair, Honorary Degree Subcommittee	2021	President and CEO, Geisinger Health System
Michael E. Flowers '76 Chair, Audit, Compliance & Risk Management Committee	2022	Attorney, Steptoe & Johnson, PLLC
Makoto Fujimura '83	2020	Director, Fuller Theological Seminary Brehm Center for Worship, Theology & Arts
Robert J. Gilligan '81 Vice Chair, Finance Committee	2021	Former VP of Transmission & Distribution, General Electric Company

TRUSTEES OF BUCKNELL UNIVERSITY, JULY 1, 2018

NAME	TERM EXPIRES (JUNE 30)	AFFILIATIONS
Susan D. Ginkel '76	2023	Former Vice President, Private Banking, Bankers Trust Company
Eugene A. Gorab '85 Chair, Investments Committee	2021	President and CEO, Greenfield Partners LLC
Sunil Gulati '81	2022	President, U.S. Soccer Federation
Marlene A. Hurd '79	2021	Former VP, Managing Director, Relationship Management, Fidelity Investments
Donald N. Isken '75	2022	Partner, Morris, Nichols, Arsht & Tunnell LLP
Laura A. Kinney '81 Vice Chair, DER Committee	2019	Former Executive Vice President and Co-CEO, Workrite Uniform Company
Lawrence S. Klock '69 Chair, Human Resources Subcommittee	2019	Former Managing Director, Russell Reynolds Associates
Kathleen M. LaPoint Chair, DER Committee	2020	Former Board of Trustees, Fundraiser, Simmons College
David Maurrasse Chair, Academic Affairs Committee	2019	President & Founder, Marga, Inc.
William B. Morrow, Jr.'70	2020	Former Managing Director and COO, Mid Europa Partners, LLP
Nancy B. Prial '80 Chair, Finance Committee	2019	Co-CEO Essex Investment Management Company, LLC
John T. Reynolds '92	2022	Co-Founder & Managing Director, Lime Rock Partners
Frank Schoeneman '76	2021	Chairman and CEO, Empire Education Group
Kirsten Schubauer Heinemann '81	2022	Former Assistant Director of Admissions, Friends Academy
Erika N.D. Stanat '90 Vice Chair, Nominating & Governance Committee	2019	Partner – Harter, Secrest & Emery, LLP
Christopher B. Sullivan '92 Chair, Facilities and Infrastructure Subcommittee	2023	Chairman and CEO, Primus Technologies Corporation
Garry D. Thaniel '04	2023	Global Head, GS1, CNCTKicks
David J. West '85	2023	Partner, Centerview Capital Holdings
Robin G. Zafirovski '79 Vice Chair, Campus Life Committee	2019	Former Financial Analyst, GE Capital

SENIOR LEADERSHIP TEAM

John Bravman, *President*
Robert Midkiff, *Interim Provost*
Raquel Alexander, *Dean of the Freeman College of Management*
Amy Badal, *Dean of Students*
Param Bedi, *VP for Library & Information Technology*
Bill Conley, *VP for Enrollment Management*
Amy Foerster, *General Counsel & Chief of Staff*
Andy Hirsch, *Chief Communication Officer*
Pierre Joanis, *VP for Human Resources*
Carol Kennedy, *Executive Director of the President's Office*
Patrick T. Mather, *Dean of the College of Engineering*
Ken Ogawa, *Associate VP for Facilities and Sustainability*
Scott Rosevear, *VP for Development and Alumni Relations*
David J. Surgala, *VP for Finance and Administration*
Jermaine Truax, *Director of Athletics & Recreation*
Karl Voss, *Dean of the College of Arts & Sciences*



ACADEMIC DIVISIONS

The College of Arts & Sciences

The College of Arts & Sciences has 2,351 degree seeking undergraduate students and 287 full-time faculty members. The College of Arts & Sciences offers programs of study leading to four degrees: the Bachelor of Arts, the Bachelor of Science, the Bachelor of Science in Education, and the Bachelor of Music. The programs are designed to carry out the educational objectives of the University through courses in the arts and humanities, the social sciences, the natural sciences and mathematics.

The Freeman College of Management

The Freeman College of Management comprises 554 degree seeking undergraduate students and 27 full-time faculty. The Freeman College offers innovative professional education that combines technical skills and deep intellectual exploration to prepare thoughtful and capable leaders. In the classroom, students have the opportunity to follow their passions and develop expertise in business analytics, sustainable commerce, innovative design thinking, global leadership, accounting, and finance. All Freeman College majors lead to the degree of Bachelor of Science in Business Administration.

The College of Engineering

The College of Engineering comprises 678 degree seeking undergraduate students and 70 full-time faculty. The College of Engineering is dedicated to providing outstanding educational opportunities in engineering to a predominantly undergraduate student body of talented men and women. The faculty and courses are organized in six distinct departments: Biomedical Engineering, Chemical Engineering, Civic and Environmental Engineering, Computer Science, Electrical & Computer Engineering, and Mechanical Engineering.

Graduate Studies

Bucknell offers three different master's degrees across seven different programs in the College of Arts & Sciences, and masters of Science degrees in five programs in the College of Engineering. The role of graduate education is to provide "a deepening of the student's knowledge and experience base in the discipline by building on the increased commitment that graduate students bring to their work."

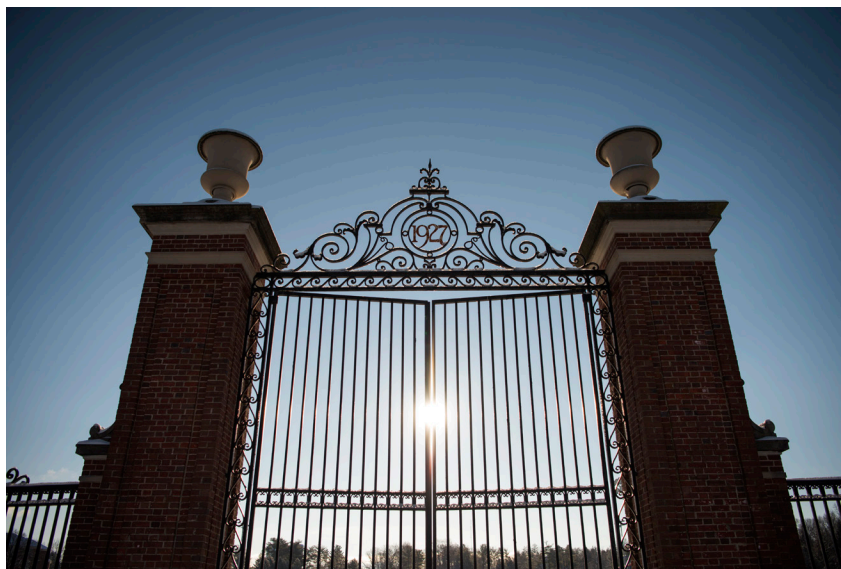
ACCREDITATION

Middle States Accreditation

Bucknell was first accredited by the Middle States in 1921. In 2014, Bucknell University completed its decennial reaccreditation with the Middle States Commission on Higher Education. The institution is fully accredited until 2024.

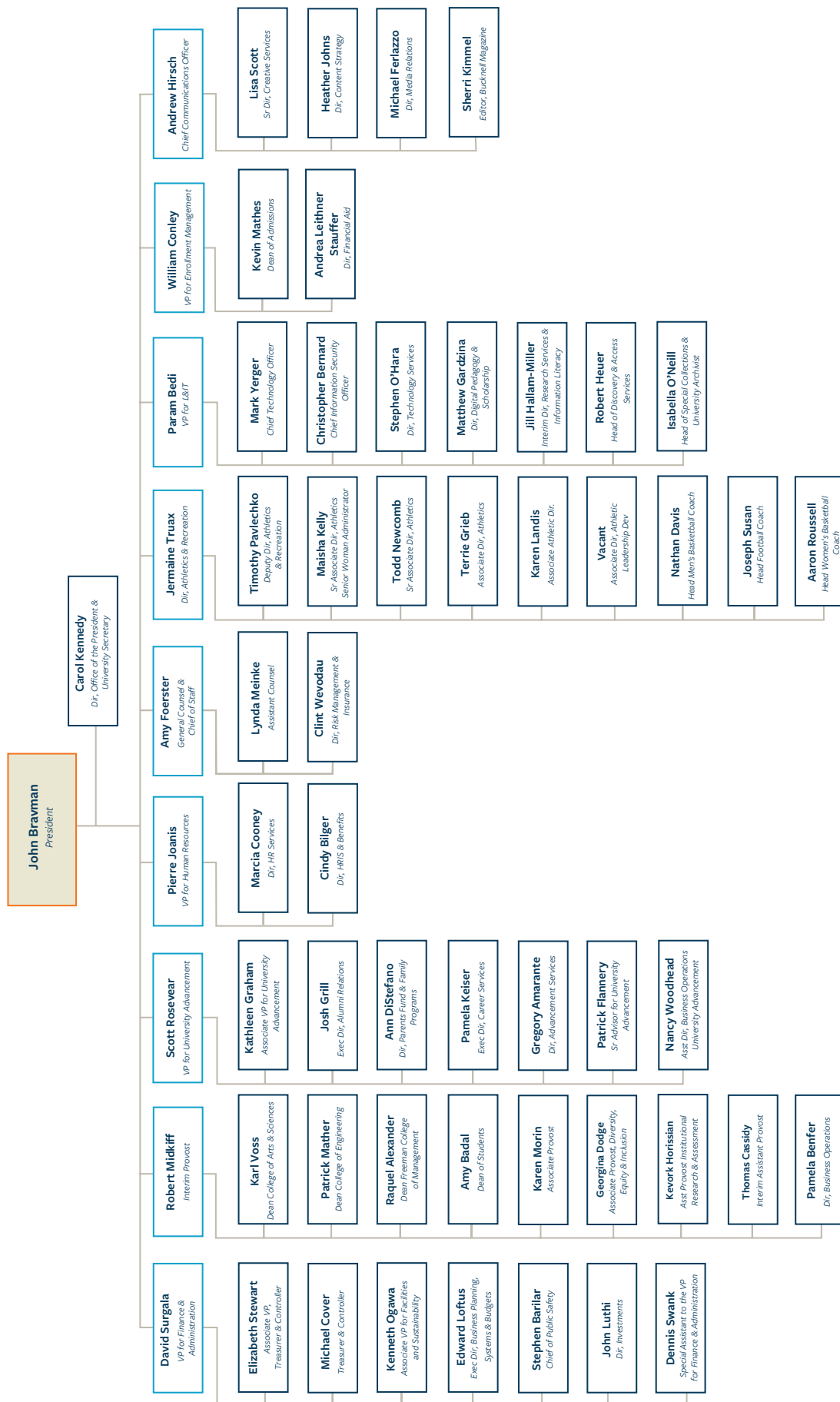
Specialized Programmatic Accreditation and Licensure

- **AACSB International** – The Association for the Advancement of Collegiate Schools of Business. Less than 5% of the world's 13,000 business programs have earned AACSB Accreditation.
- **ABET** - the Accrediting Board for Engineering and Technology, accredits the programs within the College of Engineering.
- **ACS** - the American Chemical Society is an industry-wide agency that certifies programs within the Department of Chemistry.
- **CSAB** - the Computer Science Accreditation Board, accredits the Bachelor of Science degree within the College of Arts & Sciences.
- **NASM** - the National Association of Schools of Music, accredits degree programs within the Department of Music.
- **NCAA** - the National Collegiate Athletic Association, conducts periodic certification reviews of Bucknell's athletic programs.
- **The Pennsylvania Department of Education** oversees teaching certification within the Department of Education.



BUCKNELL UNIVERSITY

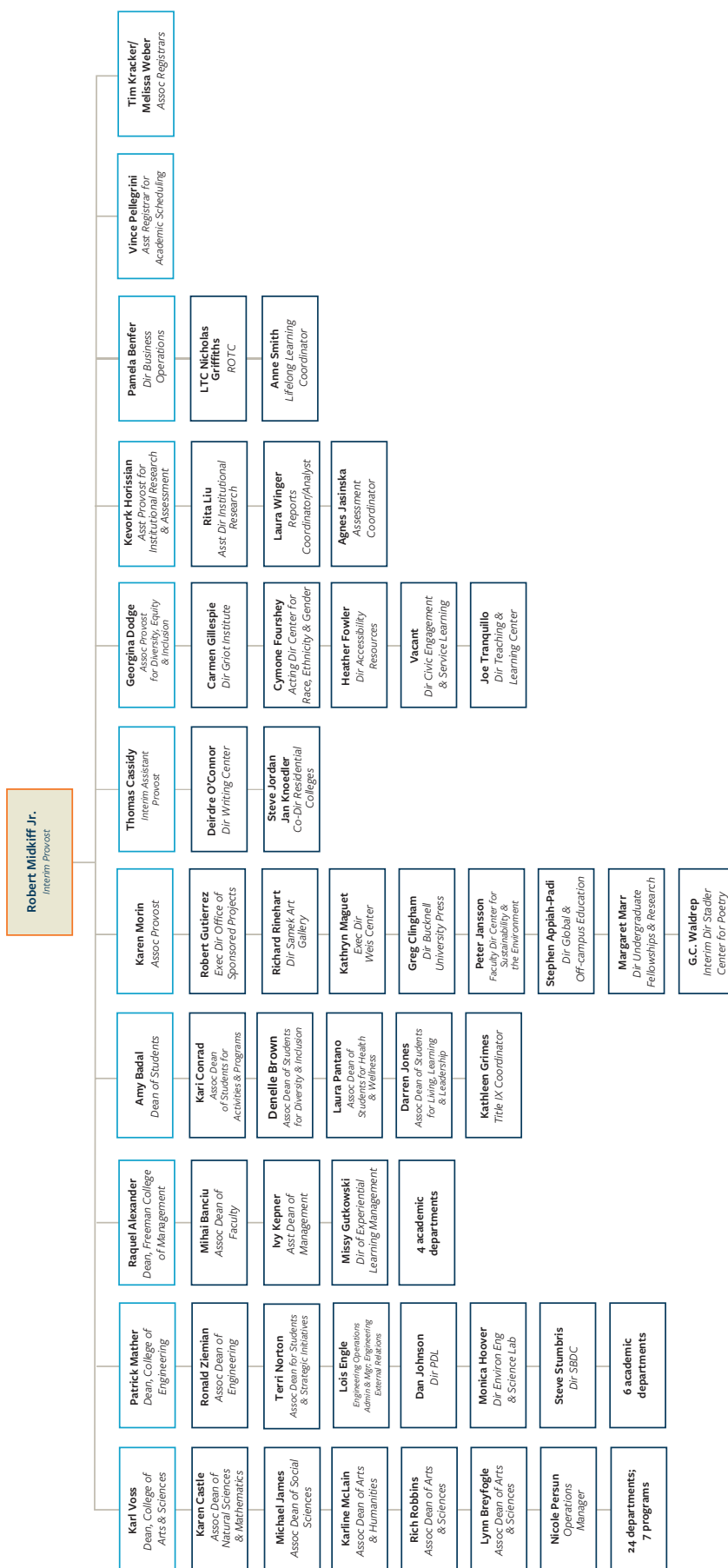
Organizational Chart



Updated: August 2018

PROVOST AREA

Organizational Chart



Updated: August 15, 2018

ADMISSIONS

ADMISSIONS BUCKNELL UNIVERSITY

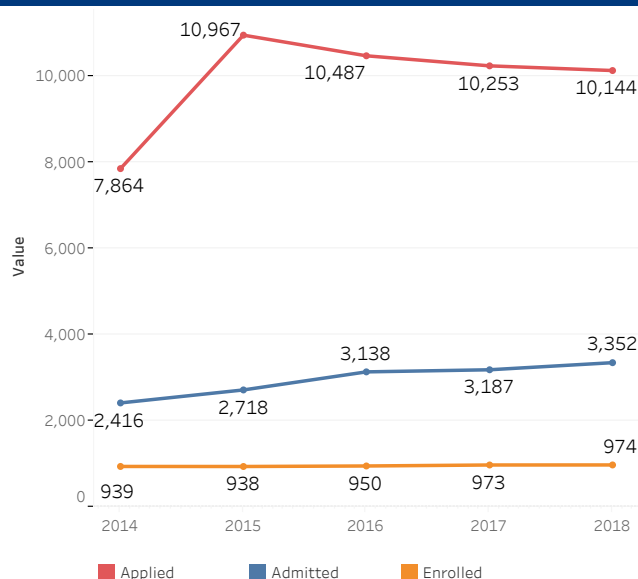
All Undergraduate Colleges

All

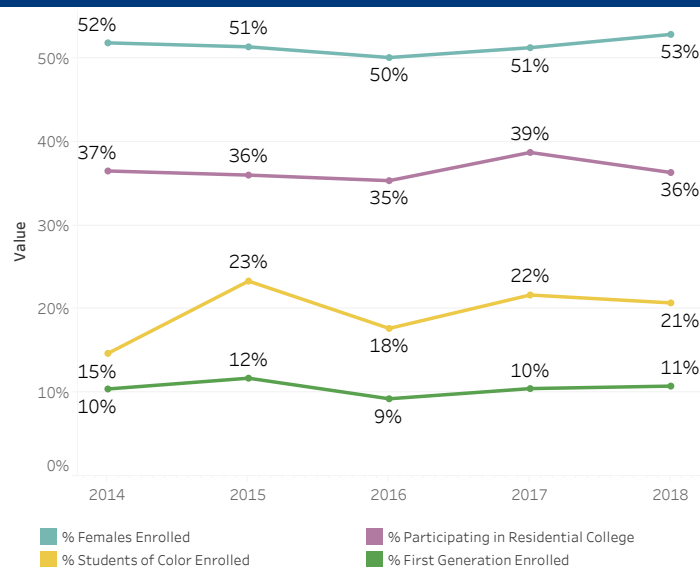
First-Year Undergraduate Admissions

	Applied	Admitted	Acceptance Rate	Enrolled	Yield	% Females Enrolled	% Students of Color Enrolled	% Participating in Residential College	% First Generation Enrolled
2014	7,864	2,416	30.7%	939	38.9%	51.9%	14.7%	36.5%	10.4%
2015	10,967	2,718	24.8%	938	34.5%	51.4%	23.3%	36.0%	11.7%
2016	10,487	3,138	29.9%	950	30.3%	50.1%	17.7%	35.4%	9.3%
2017	10,253	3,187	31.1%	973	30.5%	51.3%	21.7%	38.7%	10.5%
2018	10,144	3,352	33.0%	974	29.1%	52.9%	20.7%	36.3%	10.8%

First-Year Undergraduate Admissions Trends



First-Year Undergraduates Enrollment by Students' Demographics and Residential College Participation



Average SAT, ACT, and High School GPA for Entering First-Year Students (The 2017 and 2018 SAT scores are based on the redesigned SAT test)

	2014	2015	2016	2017	2018
Avg. SAT Verbal/SAT Evidence Based Reading & Writing_2017,2018	633	635	629	657	657
Avg. SAT Math	671	664	663	675	679
Avg. SAT Total	1,304	1,299	1,292	1,332	1,336
Avg. SAT Writing	648	636	637		
Avg. ACT Total Score	29.5	29.7	29.9	29.5	30.0
Avg. HSGPA	3.56	3.54	3.52	3.55	3.56

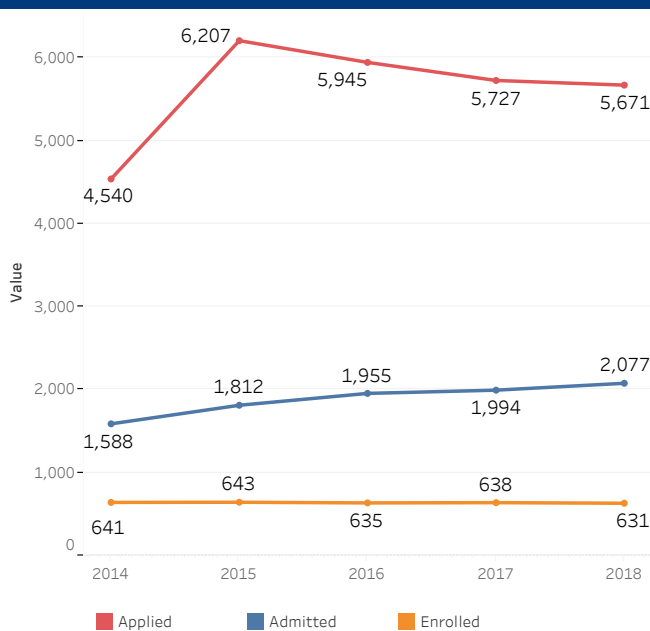
Percentile Scores of SAT, ACT, and High School GPA for Entering First-Year Students (The 2017 and 2018 SAT scores are based on the redesigned SAT test)

	2014	2015	2016	2017	2018
Percentile (25) of SAT Verbal	590	590	590	620	620
Percentile (75) of SAT Verbal	680	680	670	700	690
Percentile (25) of SAT Math	620	620	610	630	630
Percentile (75) of SAT Math	720	705	710	720	730
Percentile (25) of SAT Total	1,230	1,230	1,220	1,260	1,260
Percentile (75) of SAT Total	1,380	1,380	1,380	1,410	1,420
Percentile (25) of SAT Writing	610	590	590		
Percentile (75) of SAT Writing	700	690	690		
Percentile (25) of ACT Total Score	28	28	28	28	28
Percentile (75) of ACT Total Score	32	32	32	31	32
Percentile (25) of HSGPA	3.36	3.29	3.29	3.33	3.35
Percentile (75) of HSGPA	3.83	3.82	3.79	3.80	3.83

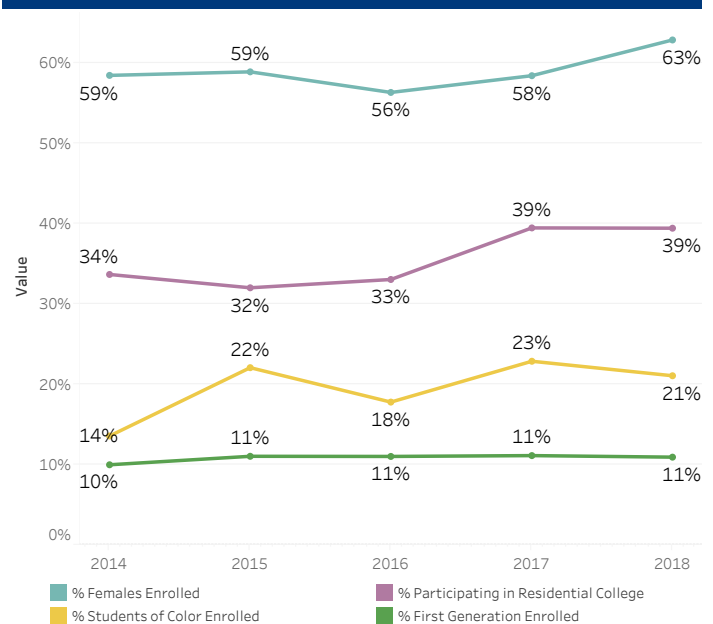
First-Year Undergraduate Admissions_A&S

	Applied	Admitted	Acceptance Rate	Enrolled	Yield	% Females Enrolled	% Students of Color Enrolled	% Participating in Residential College	% First Generation Enrolled
2014	4,540	1,588	35.0%	641	40.4%	58.5%	13.6%	33.7%	10.0%
2015	6,207	1,812	29.2%	643	35.5%	58.9%	22.1%	32.0%	11.0%
2016	5,945	1,955	32.9%	635	32.5%	56.4%	17.8%	33.1%	11.0%
2017	5,727	1,994	34.8%	638	32.0%	58.5%	22.9%	39.5%	11.1%
2018	5,671	2,077	36.6%	631	30.4%	62.9%	21.1%	39.5%	10.9%

First-Year Undergraduate Admissions Trends_A&S



First-Year Undergraduates Enrollment by Students' Demographics and Residential College Participation_A&S

Average SAT, ACT, and High School GPA for Entering First-Year Students_A&S
(The 2017 and 2018 SAT scores are based on the redesigned SAT test)

	2014	2015	2016	2017	2018
Avg. SAT Verbal/SAT Evidence Based Reading & Writing_2017,2018	630	634	624	651	651
Avg. SAT Math	655	649	649	660	664
Avg. SAT Total	1,285	1,283	1,273	1,311	1,315
Avg. SAT Writing	646	638	633		
Avg. ACT Total Score	29.1	29.3	29.5	29.0	29.6
Avg. HSGPA	3.52	3.49	3.48	3.51	3.53

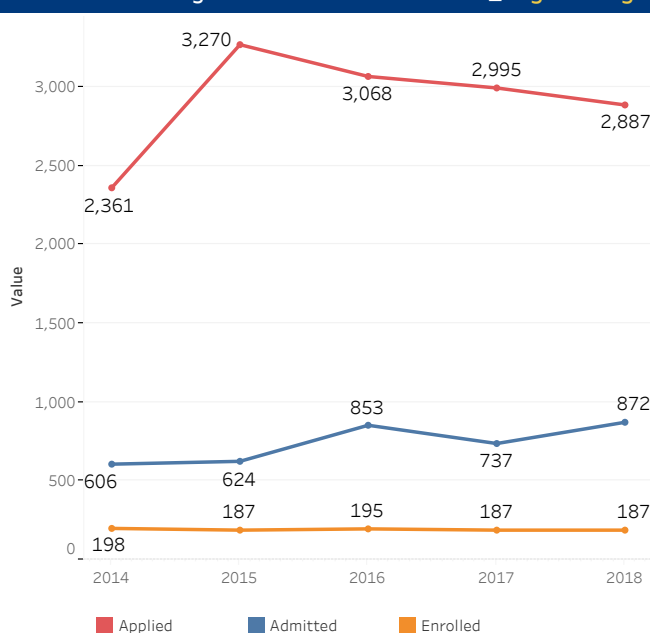
Percentile Scores of SAT, ACT, and High School GPA for Entering First-Year Students_A&S
(The 2017 and 2018 SAT scores are based on the redesigned SAT test)

	2014	2015	2016	2017	2018
Percentile (25) of SAT Verbal	580	583	580	610	610
Percentile (75) of SAT Verbal	680	680	670	700	690
Percentile (25) of SAT Math	610	610	600	600	610
Percentile (75) of SAT Math	700	690	700	710	720
Percentile (25) of SAT Total	1,220	1,210	1,180	1,230	1,240
Percentile (75) of SAT Total	1,360	1,360	1,360	1,400	1,400
Percentile (25) of SAT Writing	610	590	590		
Percentile (75) of SAT Writing	690	690	690		
Percentile (25) of ACT Total Score	27	28	28	27	28
Percentile (75) of ACT Total Score	31	31	31	31	32
Percentile (25) of HSGPA	3.31	3.26	3.26	3.29	3.31
Percentile (75) of HSGPA	3.78	3.75	3.75	3.78	3.81

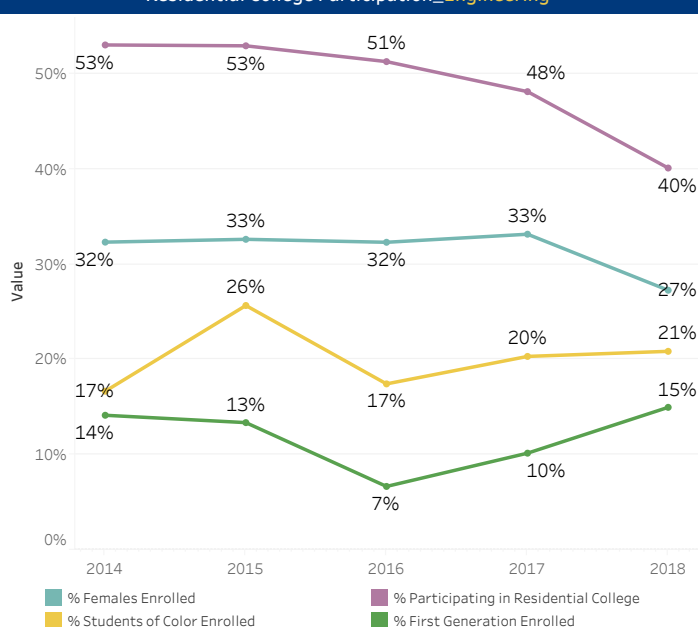
First-Year Undergraduate Admissions_Engineering

	Applied	Admitted	Acceptance Rate	Enrolled	Yield	% Females Enrolled	% Students of Color Enrolled	% Participating in Residential College	% First Generation Enrolled
2014	2,361	606	25.7%	198	32.7%	32.3%	16.7%	53.0%	14.1%
2015	3,270	624	19.1%	187	30.0%	32.6%	25.7%	52.9%	13.4%
2016	3,068	853	27.8%	195	22.9%	32.3%	17.4%	51.3%	6.7%
2017	2,995	737	24.6%	187	25.4%	33.2%	20.3%	48.1%	10.2%
2018	2,887	872	30.2%	187	21.4%	27.3%	20.9%	40.1%	15.0%

First-Year Undergraduate Admissions Trends_Engineering



First-Year Undergraduates Enrollment by Students' Demographics and Residential College Participation_Engineering

Average SAT, ACT, and High School GPA for Entering First-Year Students_Engineering
(The 2017 and 2018 SAT scores are based on the redesigned SAT test)

	2014	2015	2016	2017	2018
Avg. SAT Verbal/SAT Evidence Based Reading & Writing_2017,2018	638	644	653	669	670
Avg. SAT Math	706	709	710	715	728
Avg. SAT Total	1,344	1,353	1,363	1,381	1,398
Avg. SAT Writing	643	634	648		
Avg. ACT Total Score	31.4	31.0	31.0	31.2	31.0
Avg. HSGPA	3.75	3.70	3.64	3.66	3.68

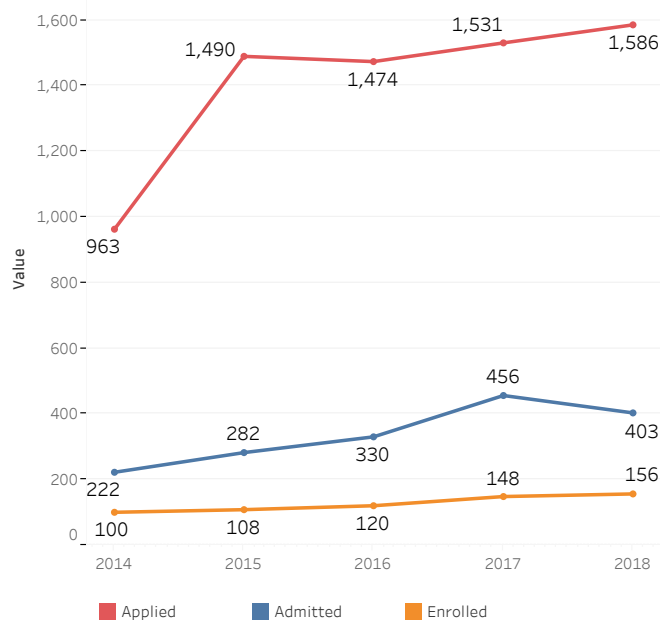
Percentile Scores of SAT, ACT, and High School GPA for Entering First-Year Students_Engineering
(The 2017 and 2018 SAT scores are based on the redesigned SAT test)

	2014	2015	2016	2017	2018
Percentile (25) of SAT Verbal	590	600	600	620	640
Percentile (75) of SAT Verbal	690	680	700	713	710
Percentile (25) of SAT Math	678	670	670	680	700
Percentile (75) of SAT Math	750	750	760	760	770
Percentile (25) of SAT Total	1,290	1,290	1,318	1,310	1,350
Percentile (75) of SAT Total	1,423	1,420	1,420	1,450	1,460
Percentile (25) of SAT Writing	600	595	610		
Percentile (75) of SAT Writing	690	670	690		
Percentile (25) of ACT Total Score	30	30	29	30	29
Percentile (75) of ACT Total Score	33	33	33	33	33
Percentile (25) of HSGPA	3.59	3.48	3.45	3.50	3.52
Percentile (75) of HSGPA	3.95	3.94	3.88	3.89	3.93

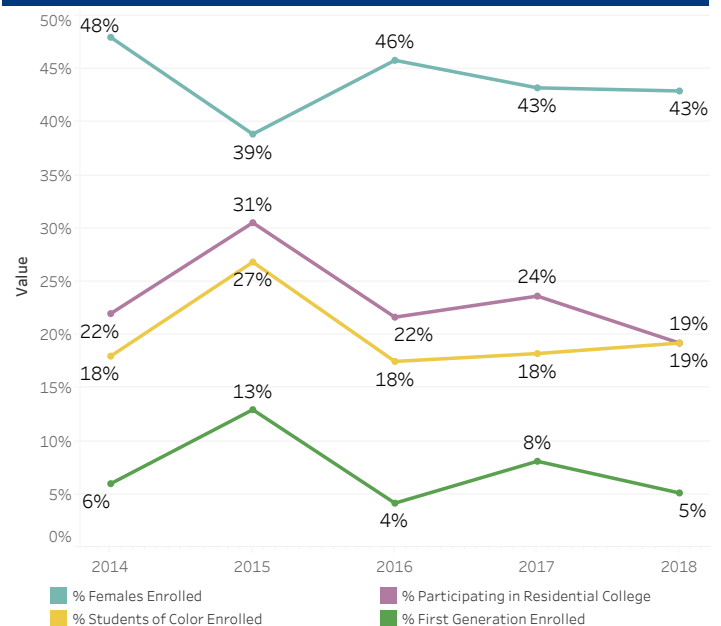
First-Year Undergraduate Admissions_Management

	Applied	Admitted	Acceptance Rate	Enrolled	Yield	% Females Enrolled	% Students of Color Enrolled	% Participating in Residential College	% First Generation Enrolled
2014	963	222	23.1%	100	45.0%	48.0%	18.0%	22.0%	6.0%
2015	1,490	282	18.9%	108	38.3%	38.9%	26.9%	30.6%	13.0%
2016	1,474	330	22.4%	120	36.4%	45.8%	17.5%	21.7%	4.2%
2017	1,531	456	29.8%	148	32.5%	43.2%	18.2%	23.6%	8.1%
2018	1,586	403	25.4%	156	38.7%	42.9%	19.2%	19.2%	5.1%

First-Year Undergraduate Admissions Trends_Management



First-Year Undergraduates Enrollment by Students' Demographics and Residential College Participation_Management

Average SAT, ACT, and High School GPA for Entering First-Year Students_Management
(The 2017 and 2018 SAT scores are based on the redesigned SAT test)

	2014	2015	2016	2017	2018
Avg. SAT Verbal/SAT Evidence Based Reading & Writing_2017,2018	642	627	623	667	662
Avg. SAT Math	697	666	669	686	679
Avg. SAT Total	1,339	1,293	1,292	1,353	1,342
Avg. SAT Writing	676	632	641		
Avg. ACT Total Score	29.8	30.3	30.4	29.9	30.4
Avg. HSGPA	3.51	3.52	3.54	3.54	3.55

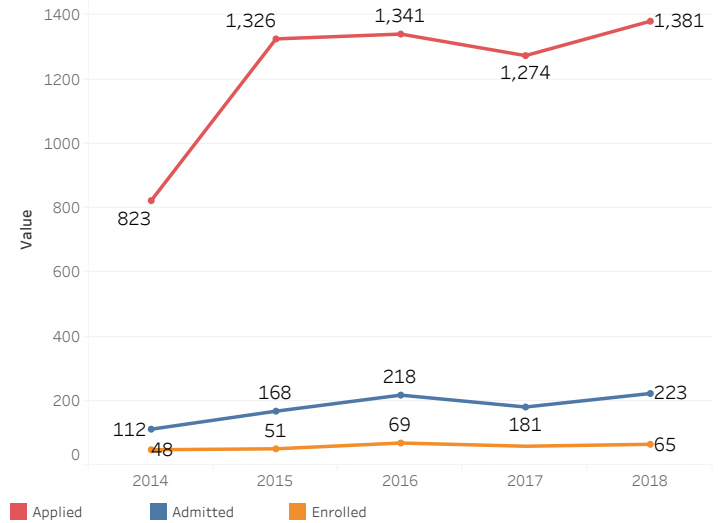
Percentile Scores of SAT, ACT, and High School GPA for Entering First-Year Students_Management
(The 2017 and 2018 SAT scores are based on the redesigned SAT test)

	2014	2015	2016	2017	2018
Percentile (25) of SAT Verbal	620	580	583	630	630
Percentile (75) of SAT Verbal	670	678	670	700	690
Percentile (25) of SAT Math	663	630	630	650	660
Percentile (75) of SAT Math	720	700	710	720	710
Percentile (25) of SAT Total	1,300	1,233	1,230	1,300	1,290
Percentile (75) of SAT Total	1,378	1,370	1,360	1,400	1,400
Percentile (25) of SAT Writing	640	590	593		
Percentile (75) of SAT Writing	718	680	690		
Percentile (25) of ACT Total Score	29	29	29	29	29
Percentile (75) of ACT Total Score	31	32	32	32	32
Percentile (25) of HSGPA	3.36	3.30	3.29	3.35	3.40
Percentile (75) of HSGPA	3.75	3.74	3.77	3.75	3.73

First-Year Admissions Statistics International Students

	Applied	Admitted	Acceptance Rate	Enrolled	Yield
2014	823	112	13.6%	48	42.9%
2015	1,326	168	12.7%	51	30.4%
2016	1,341	218	16.3%	69	31.7%
2017	1,274	181	14.2%	59	32.6%
2018	1,381	223	16.1%	65	29.1%

First-Year Admissions Statistics International Students

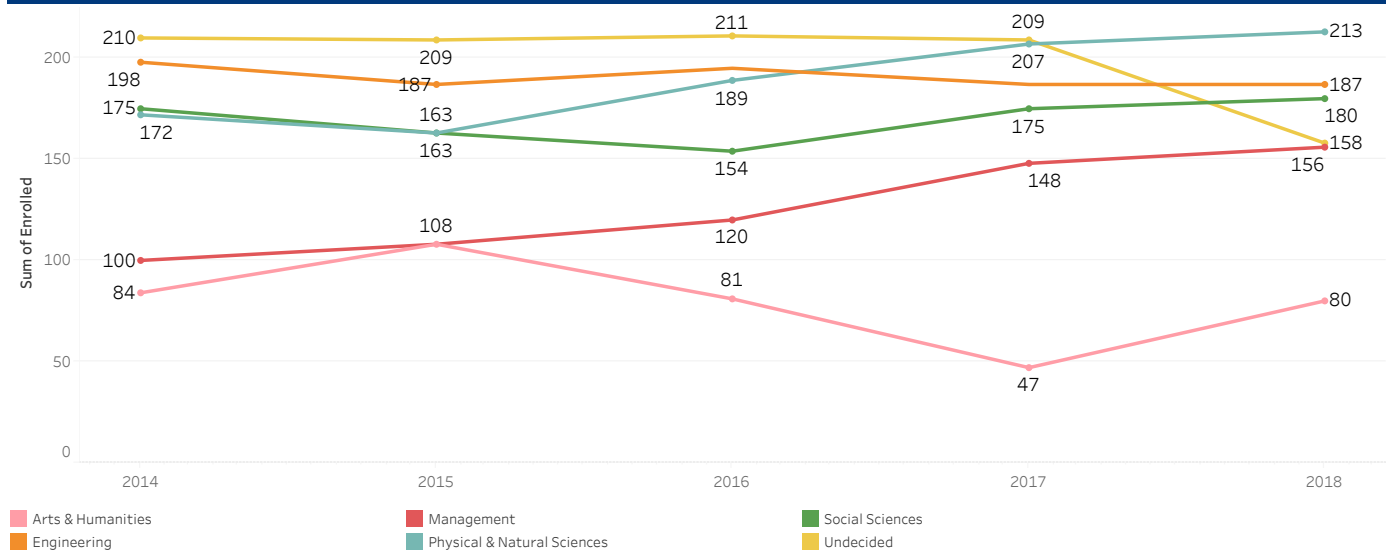


First-Year Admissions by Academic Area of Interest

(Interdisciplinary studies: Economics & Mathematics was coded as Social Sciences before 2015 and was coded under Natural Sciences after 2015)

	2014			2015			2016			2017			2018		
	Applied	Admitted	Enrolled	Applied	Admitted	Enrolled	Applied	Admitted	Enrolled	Applied	Admitted	Enrolled	Applied	Admitted	Enrolled
Arts & Humanities	555	246	84	698	333	108	648	300	81	396	191	47	691	328	80
Engineering	2,361	606	198	3,270	624	187	3,068	853	195	2,995	737	187	2,887	872	187
Management	963	222	100	1,490	282	108	1,474	330	120	1,531	456	148	1,586	403	156
Physical & Natural Sciences	1,716	572	172	2,428	604	163	2,498	795	189	2,388	875	207	2,363	897	213
Social Sciences	1,320	394	175	1,667	444	163	1,544	413	154	1,564	469	175	1,604	514	180
Undecided	949	376	210	1,414	431	209	1,255	447	211	1,379	459	209	1,013	338	158
Grand Total	7,864	2,416	939	10,967	2,718	938	10,487	3,138	950	10,253	3,187	973	10,144	3,352	974

First-Year Undergraduate Enrollment by Academic Area of Interest



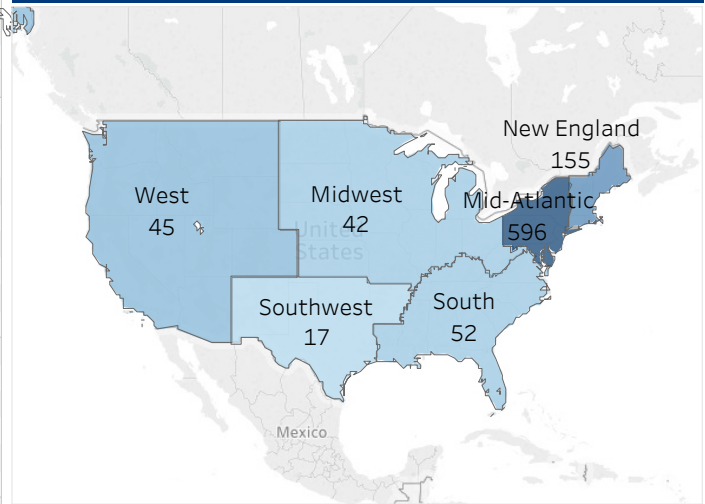
First-Year Undergraduate Enrollment by Region and State

		2014	2015	Year		2017	2018
Mid-Atlantic	D.C.	3	3	6	6	8	
	Delaware	2	1	3	3	5	
	Maryland	55	50	52	65	55	
	New Jersey	154	186	186	170	179	
	New York	130	142	154	134	158	
	Pennsylvania	206	182	150	190	191	
Midwest	Illinois	31	16	20	18	17	
	Indiana	2		3	2	2	
	Iowa		1				
	Kansas	1					
	Michigan	3	4	2	1	5	
	Minnesota	3	4	2	3	4	
	Missouri	2	3	3	1		
	Ohio	10	10	13	13	12	
	Wisconsin		1	2	2	2	
New England	Connecticut	85	75	77	78	80	
	Maine	3	5	6	7	1	
	Massachusetts	57	69	60	70	62	
	New Hampshire	10		4	9	1	
	Rhode Island	5	1	5	5	6	
	Vermont	7	4	1	4	5	
South	Alabama			1		1	
	Florida	7	12	11	15	9	
	Georgia	2	4	6	3	12	
	Kentucky			2	4	2	
	Louisiana			1	1		
	Mississippi	1					
	North Carolina	12	7	8	11	10	
	South Carolina	1	3	2			
	Tennessee		3				
	Virginia	24	23	25	27	18	
Southwest	Arkansas			1			
	New Mexico		1				
	Texas	5	5	10	11	17	
West	Arizona	3	2	2	2		
	California	49	54	45	53	34	
	Colorado	8	7	5	6	5	
	Hawaii				1		
	Idaho		1	1		1	
	Nevada		2	1			
	Oregon	2	2	4	1	2	
	Utah	1				1	
	Washington	4	1	5	2	2	
Grand Total		888	884	879	918	907	

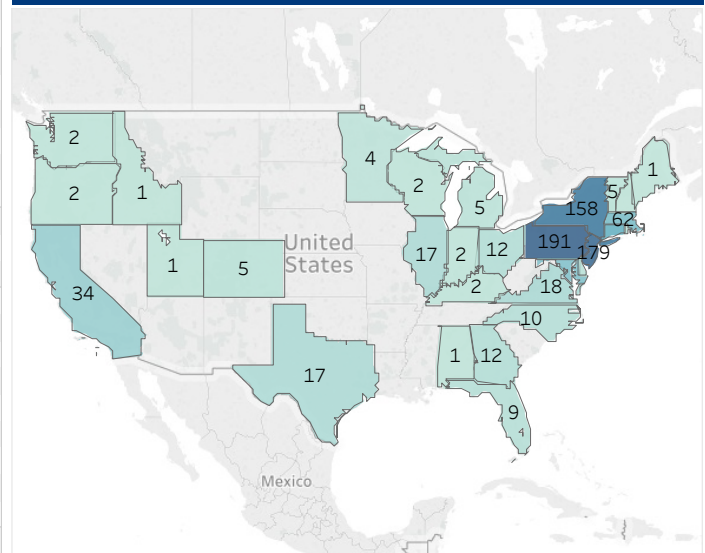
2018 Admissions

2018

2018 First-Year Undergraduate Enrollment by U.S. Geographic Region



2018 First-Year Undergraduate Enrollment by U.S. State



Graduate School Admissions

Year	Applied	Admitted	Acceptance Rate	Enrolled	Yield	% Females Enrolled	% Students of Color Enrolled	Mean UG GPA
2014	74	29	39%	26	90%	62%	0%	3.51
2015	87	29	33%	18	62%	39%	25%	3.40
2016	88	29	33%	21	72%	52%	10%	3.45
2017	73	37	51%	21	57%	57%	14%	3.36
2018	77	37	48%	21	57%	57%	0%	3.44

Undergraduate Transfers Admissions

Year	Applied	Admitted	Acceptance Rate	Enrolled	Yield	% Female Enrolled	% Students of Color Enrolled
2014	142	50	35.2%	30	60.0%	40.0%	26.7%
2015	207	48	23.2%	23	47.9%	56.5%	39.1%
2016	183	71	38.8%	25	35.2%	28.0%	12.0%
2017	257	75	29.2%	29	38.7%	41.4%	37.9%
2018	207	45	21.7%	24	53.3%	41.7%	29.2%

ENROLLMENT

ENROLLMENT BUCKNELL UNIVERSITY

10 Year Enrollment History (as of fall of stated year)

Undergraduate Enrollment

Year	First-Year Undergrad	Transfer Undergrad	FT Undergrad	PT Undergrad	Total Undergrad	Undergrad FTE
2008	957	25	3,563	20	3,583	3,570
2009	920	24	3,523	20	3,543	3,530
2010	929	36	3,488	20	3,508	3,495
2011	916	28	3,530	24	3,554	3,538
2012	915	28	3,512	21	3,533	3,519
2013	933	28	3,504	28	3,532	3,513
2014	939	30	3,538	27	3,565	3,547
2015	938	23	3,533	36	3,569	3,545
2016	950	25	3,530	41	3,571	3,544
2017	973	29	3,585	26	3,611	3,594
2018	974	24	3,581	16	3,597	3,586

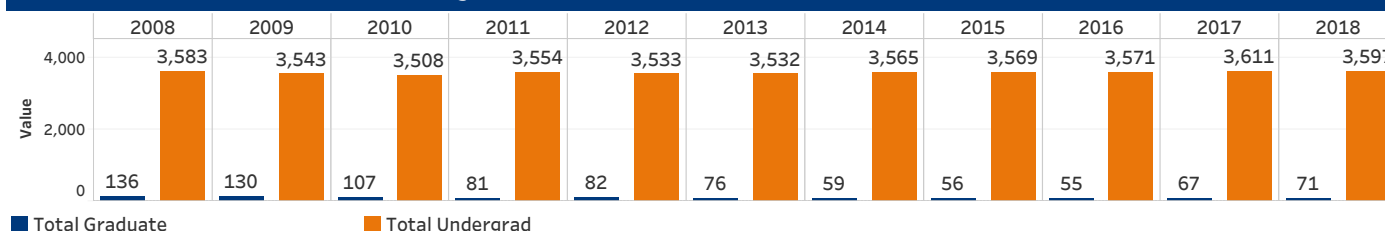
Graduate Enrollment

Year	First-Year Graduate	Transfer Graduates	Total FT Graduate	Total PT Graduate	Total Graduate	Graduate FTE
2008	19		76	60	136	96
2009	21		80	50	130	97
2010	13		66	41	107	80
2011	16		54	27	81	63
2012	26		54	28	82	63
2013	12		51	25	76	59
2014	12		43	16	59	48
2015	5		44	12	56	48
2016	22		39	16	55	44
2017	21		43	24	67	51
2018	21		40	31	71	50

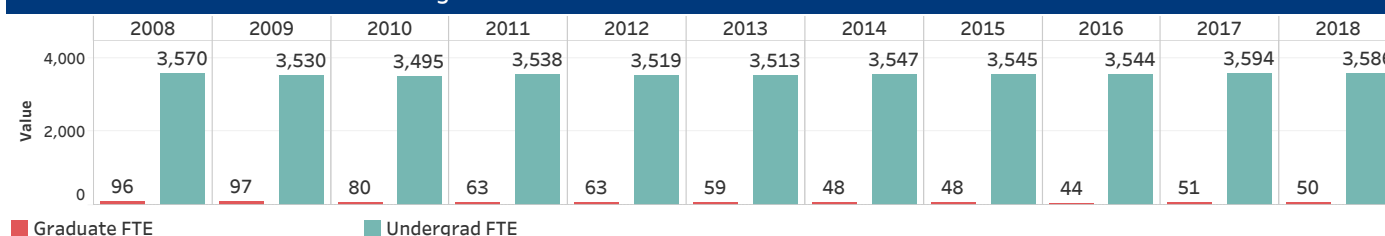
Total Enrollment (* FTE total may not sum up by undergraduate FTE and graduate FTE due to rounding)

Year	First-Year Total	Transfer Total	FT Enrollment Total	PT Enrollment Total	University Headcount Total	FTE Total*
2008	976	25	3,639	80	3,719	3,666
2009	941	24	3,603	70	3,673	3,626
2010	942	36	3,554	61	3,615	3,574
2011	932	28	3,584	51	3,635	3,601
2012	941	28	3,566	49	3,615	3,582
2013	945	28	3,555	53	3,608	3,573
2014	951	30	3,581	43	3,624	3,595
2015	943	23	3,577	48	3,625	3,593
2016	972	25	3,569	57	3,626	3,588
2017	994	29	3,628	50	3,678	3,645
2018	995	24	3,621	47	3,668	3,637

Undergraduate and Graduate Enrollment 10-Year Trends



Undergraduate and Graduate FTE Enrollment 10-Year Trends



All Colleges and Graduate Studies

All

Enrollment Diversity for Degree-Seeking Students

	Undergrad		Graduate	
2018	3,583		43	
	Undergrad	Graduate	Undergrad	Graduate
Female	1,826	24	Female	51%
Male	1,757	19	Male	49%
	Undergrad	Graduate	Undergrad	Graduate
American Indian/Alaska	2		American Indian/Alaska	0%
Asian	203	1	Asian	6%
Black/African American	127	1	Black/African American	4%
Hispanic/Latino	248		Hispanic/Latino	7%
Multiple Races	161		Multiple Races	4%
Non-Resident Alien	239	10	Non-Resident Alien	7%
Unknown	7	3	Unknown	0%
White	2,596	28	White	72%
	Undergrad	Graduate	Undergrad	Graduate
Non-Resident Alien	239	10	Non-Resident Alien	7%
Resident Alien	35		Resident Alien	1%
US Citizen	3,138	33	US Citizen	88%
US/Foreign National	171		US/Foreign National	5%
	Undergrad	Graduate	Undergrad	Graduate
Pennsylvania	709	22	Pennsylvania	20%
Other U.S. State	2,616	11	Other U.S. State	73%
Other Countries	258	10	Other Countries	7%
	Undergrad		Undergrad	Graduate
PELL Recipients	350		10%	0%
	Undergrad	Graduate	Undergrad	Graduate
First Generation	381	6	11%	14%

Enrollment by Class and Gender for All Enrolled Students

	2018		Grand Total
	Female	Male	
First-year	517	461	978
Sophomore	466	446	912
Junior	404	441	845
Senior	435	401	836
Special	11	7	18
4th Year of 5-Year Engineer	2	6	8
Graduate	25	21	46
Non-degree	15	10	25
Grand Total	1,875	1,793	3,668

Enrollment Diversity for Degree-Seeking Students_A&S

		Undergrad	
2018		2,351	
	Undergrad		Undergrad
Female	1,360	Female	58%
Male	991	Male	42%
	Undergrad		Undergrad
American Indian/Alaska	1	American Indian/Alaska	0%
Asian	120	Asian	5%
Black/African American	100	Black/African American	4%
Hispanic/Latino	177	Hispanic/Latino	8%
Multiple Races	113	Multiple Races	5%
Non-Resident Alien	139	Non-Resident Alien	6%
Unknown	3	Unknown	0%
White	1,698	White	72%
	Undergrad		Undergrad
Non-Resident Alien	139	Non-Resident Alien	6%
Resident Alien	18	Resident Alien	1%
US Citizen	2,075	US Citizen	88%
US/Foreign National	119	US/Foreign National	5%
	Undergrad		Undergrad
Pennsylvania	469	Pennsylvania	20%
Other U.S. State	1,732	Other U.S. State	74%
Other Countries	150	Other Countries	6%
	Undergrad		Undergrad
PELL Recipients	252		11%
	Undergrad		Undergrad
First Generation	270		11%

Enrollment by Class and Gender for All Enrolled Students_A&S

	2018		Grand Total
	Female	Male	
First-year	398	236	634
Sophomore	344	254	598
Junior	297	273	570
Senior	319	227	546
Special	11	6	17
Grand Total	1,369	996	2,365

Engineering
College of Engineering

Enrollment Diversity for Degree-Seeking Students_Engineering

Undergrad			
2018	678		
	Undergrad		Undergrad
Female	217	Female	32%
Male	461	Male	68%
	Undergrad		Undergrad
Asian	39	Asian	6%
Black/African American	14	Black/African American	2%
Hispanic/Latino	40	Hispanic/Latino	6%
Multiple Races	31	Multiple Races	5%
Non-Resident Alien	78	Non-Resident Alien	12%
Unknown	3	Unknown	0%
White	473	White	70%
	Undergrad		Undergrad
Non-Resident Alien	78	Non-Resident Alien	12%
Resident Alien	10	Resident Alien	1%
US Citizen	561	US Citizen	83%
US/Foreign National	29	US/Foreign National	4%
	Undergrad		Undergrad
Pennsylvania	152	Pennsylvania	22%
Other U.S. State	443	Other U.S. State	65%
Other Countries	83	Other Countries	12%
	Undergrad		Undergrad
PELL Recipients	56		8%
	Undergrad		Undergrad
First Generation	71		10%

Enrollment by Class and Gender for All Enrolled Students_Engineering

	2018		Grand Total
	Female	Male	
First-year	52	136	188
Sophomore	61	111	172
Junior	49	108	157
Senior	53	100	153
4th Year of 5-Year Engineer	2	6	8
Grand Total	217	461	678

Management

Freeman College of Management

Enrollment Diversity for Degree-Seeking Students_Management

Undergrad			
2018	554		
	Undergrad		Undergrad
Female	249	Female	45%
Male	305	Male	55%
	Undergrad		Undergrad
American Indian/Alaska	1	American Indian/Alaska	0%
Asian	44	Asian	8%
Black/African American	13	Black/African American	2%
Hispanic/Latino	31	Hispanic/Latino	6%
Multiple Races	17	Multiple Races	3%
Non-Resident Alien	22	Non-Resident Alien	4%
Unknown	1	Unknown	0%
White	425	White	77%
	Undergrad		Undergrad
Non-Resident Alien	22	Non-Resident Alien	4%
Resident Alien	7	Resident Alien	1%
US Citizen	502	US Citizen	91%
US/Foreign National	23	US/Foreign National	4%
	Undergrad		Undergrad
Pennsylvania	88	Pennsylvania	16%
Other U.S. State	441	Other U.S. State	80%
Other Countries	25	Other Countries	5%
	Undergrad		Undergrad
PELL Recipients	42		8%
	Undergrad		Undergrad
First Generation	40		7%

Enrollment by Class and Gender for All Enrolled Students_Management

	2018		Grand Total
	Female	Male	
First-year	67	89	156
Sophomore	61	81	142
Junior	58	60	118
Senior	63	74	137
Special		1	1
Grand Total	249	305	554

Graduate

Graduate Studies

Enrollment Diversity for Degree-Seeking Students_Graduate

Graduate			
2018	43		
	Graduate		Graduate
Female	24	Female	56%
Male	19	Male	44%
	Graduate		Graduate
Asian	1	Asian	2%
Black/African American	1	Black/African American	2%
Non-Resident Alien	10	Non-Resident Alien	23%
Unknown	3	Unknown	7%
White	28	White	65%
	Graduate		Graduate
Non-Resident Alien	10	Non-Resident Alien	23%
US Citizen	33	US Citizen	77%
	Graduate		Graduate
Pennsylvania	22	Pennsylvania	51%
Other U.S. State	11	Other U.S. State	26%
Other Countries	10	Other Countries	23%
	Graduate		Graduate
First Generation	6		14%

Enrollment by Class and Gender for All Enrolled Students_Graduate

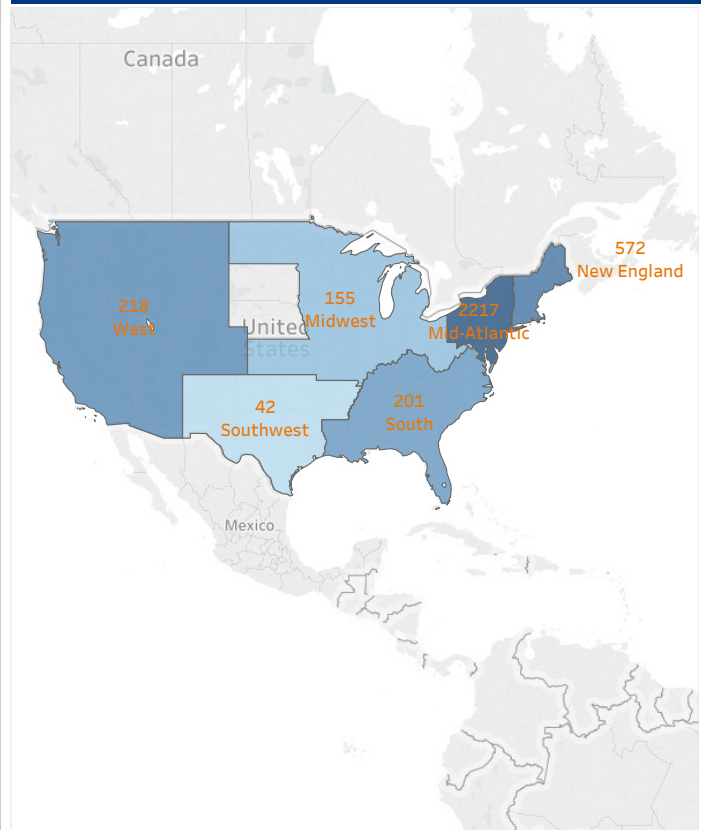
	2018		
	Female	Male	Grand Total
Graduate	24	19	43
Non-degree	16	12	28
Grand Total	40	31	71

Student Enrollment By U.S. Region and State, 2018

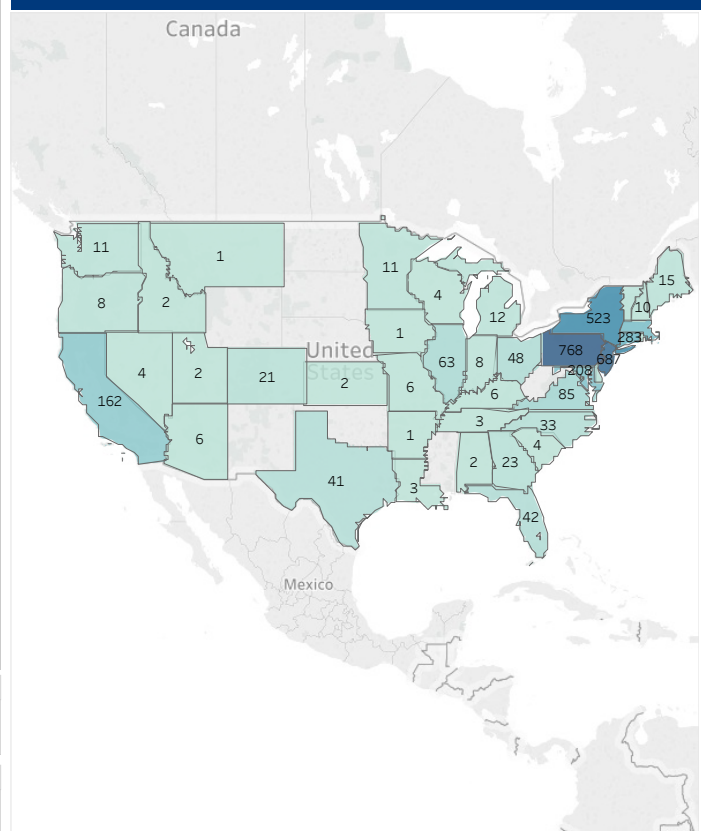
(Non-resident Aliens who had U.S. addresses are counted by U.S. region too)

	Undergrad	Graduate	Total
Mid-Atlantic D.C.	19		19
Delaware	12		12
Maryland	207	1	208
New Jersey	684	3	687
New York	522	1	523
Pennsylvania	727	41	768
Total	2,171	46	2,217
Midwest			
Illinois	63		63
Indiana	8		8
Iowa	1		1
Kansas	2		2
Michigan	12		12
Minnesota	11		11
Missouri	6		6
Ohio	48		48
Wisconsin	4		4
Total	155		155
New England			
Connecticut	283		283
Maine	15		15
Massachusetts	232	1	233
New Hampshire	10		10
Rhode Island	17		17
Vermont	13	1	14
Total	570	2	572
South			
Alabama	2		2
Florida	41	1	42
Georgia	22	1	23
Kentucky	6		6
Louisiana	2	1	3
North Carolina	33		33
South Carolina	4		4
Tennessee	3		3
Virginia	84	1	85
Total	197	4	201
Southwest			
Arkansas	1		1
Texas	41		41
Total	42		42
West			
Arizona	6		6
California	161	1	162
Colorado	21		21
Hawaii	1		1
Idaho	2		2
Montana	1		1
Nevada	4		4
Oregon	8		8
Utah	2		2
Washington	11		11
Total	217	1	218
Total with U.S. Address	3,352	53	3,405
	Undergrad	Graduate	Total
Non-Resident Alien	243	24	267
	Undergrad	Graduate	Total
2018	3,597	71	3,668

Geographic Origins of Enrolled Undergraduate and Graduate Students, by U.S. Region, 2018



U.S. States of Enrolled Undergraduate and Graduate Students, 2018



Undergraduate Students Majoring in STEM Disciplines By Gender			Undergraduate Students Majoring in STEM Disciplines By First Generation		
MajorDescription STEM	2018		MajorDescription STEM	2018	
	Female	Male		First Generation	Non First Generation
Animal Behavior	32	4	Animal Behavior	3	33
Applied Mathematical Sciences	14	12	Applied Mathematical Sciences	3	23
Biology	158	64	Biology	33	189
Biomedical Engineering	35	28	Biomedical Engineering	6	57
Biophysics		1	Biophysics		1
Cell Biology/Biochemistry	48	24	Cell Biology/Biochemistry	5	67
Chemical Engineering	48	54	Chemical Engineering	15	87
Chemistry	30	15	Chemistry	10	35
Civil Engineering	30	71	Civil Engineering	9	92
Computer Engineering	8	26	Computer Engineering	5	29
Computer Sci. & Engineering	25	82	Computer Sci. & Engineering	12	95
Computer Science	14	49	Computer Science	7	56
Electrical Engineering	14	49	Electrical Engineering	8	55
Environmental Engineering	21	14	Environmental Engineering	1	34
Environmental Geosciences	3	3	Environmental Geosciences	1	5
Geology	7	8	Geology		15
Interdisc Studies Econ & Math	15	20	Interdisc Studies Econ & Math	6	29
Mathematical Economics	13	26	Mathematical Economics	3	36
Mathematics	19	19	Mathematics	8	30
Mechanical Engineering	25	107	Mechanical Engineering	8	124
Neuroscience	70	22	Neuroscience	8	84
Physics	8	23	Physics	2	29
Undeclared Engineering	11	30	Undeclared Engineering	7	34
Grand Total	648	751	Grand Total	160	1,239

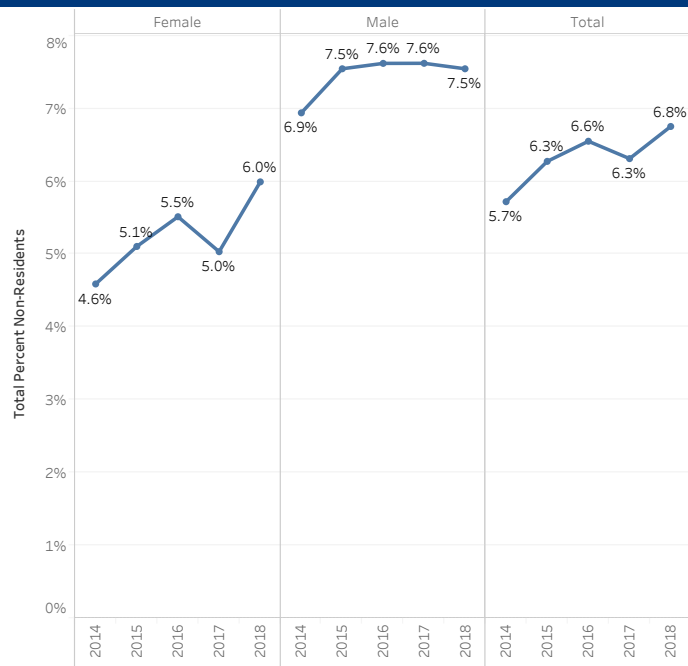
Undergraduate Students Majoring in STEM Disciplines By Race/Ethnicity					
MajorDescription STEM	2018				Grand Total
	International	Race Unknown	Students of Color	White	
Animal Behavior			5	31	36
Applied Mathematical Sciences	11		5	10	26
Biology	5	1	65	151	222
Biomedical Engineering	5	1	6	51	63
Biophysics			1		1
Cell Biology/Biochemistry	4		17	51	72
Chemical Engineering	6		19	77	102
Chemistry	2		6	37	45
Civil Engineering	7	1	16	77	101
Computer Engineering	7		6	21	34
Computer Sci. & Engineering	20	1	24	62	107
Computer Science	10		18	35	63
Electrical Engineering	15		16	32	63
Environmental Engineering	2		8	25	35
Environmental Geosciences				6	6
Geology			1	14	15
Interdisc Studies Econ & Math	6		7	22	35
Mathematical Economics	9		5	25	39
Mathematics	12		3	23	38
Mechanical Engineering	11		23	98	132
Neuroscience	2		17	73	92
Physics	3		3	25	31
Undeclared Engineering	5		6	30	41
Grand Total	142	4	277	976	1,399

Undergrad Enrollment by Gender and Ethnicity

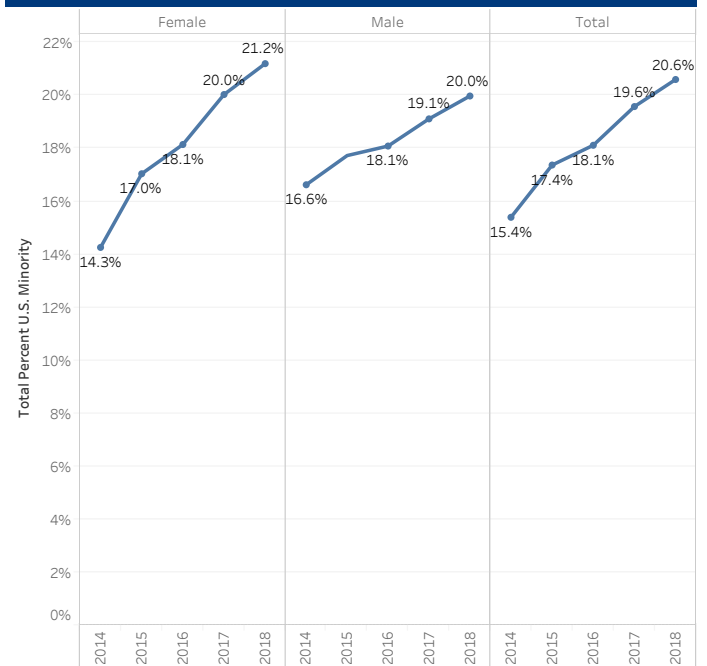
(Reference: IPEDS Fall Enrollment) *NHPI-Native Hawaiian and Pacific Islander

		American Indian	Asian	Black	Hispanic	Multi-race	NHPI*	Nonresident Alien	Unknown	White	Total	Total % Non-Resid..	% Students of Color
2014	Female	0	71	52	80	61	0	85	6	1,496	1,851	4.6%	14.3%
	Male	1	55	60	107	62	0	119	8	1,302	1,714	6.9%	16.6%
	Total	1	126	112	187	123	0	204	14	2,798	3,565	5.7%	15.4%
2015	Female	0	96	55	96	70	0	95	7	1,441	1,860	5.1%	17.0%
	Male	1	60	65	122	55	0	129	5	1,272	1,709	7.5%	17.7%
	Total	1	156	120	218	125	0	224	12	2,713	3,569	6.3%	17.4%
2016	Female	0	101	53	108	67	0	100	4	1,380	1,813	5.5%	18.1%
	Male	1	68	70	116	63	0	134	2	1,304	1,758	7.6%	18.1%
	Total	1	169	123	224	130	0	234	6	2,684	3,571	6.6%	18.1%
2017	Female	0	112	58	120	76	0	92	7	1,362	1,827	5.0%	20.0%
	Male	0	72	69	129	71	0	136	1	1,306	1,784	7.6%	19.1%
	Total	0	184	127	249	147	0	228	8	2,668	3,611	6.3%	19.6%
2018	Female	1	122	53	122	91	0	110	6	1,330	1,835	6.0%	21.2%
	Male	1	81	74	126	70	0	133	1	1,276	1,762	7.5%	20.0%
	Total	2	203	127	248	161	0	243	7	2,606	3,597	6.8%	20.6%

Percent Non-Resident Alien Students by Gender_Undergraduate Enrollment Trends



Percent Students of Color by Gender_Undergraduate Enrollment Trends



Graduate Enrollment by Gender and Ethnicity
(Reference: IPEDS Fall Enrollment) *NHPI-Native Hawaiian and Pacific Islander

		American Indian	Asian	Black	Hispanic	Multi-race	NHPI*	Nonresident Alien	Unknown	White	Total	Total % Non-Residents	% Students of Color
2014	Female	0	1	1	1	1	0	11	0	17	32	34.4%	12.5%
	Male	0	0	1	0	0	0	7	0	19	27	25.9%	3.7%
	Total	0	1	2	1	1	0	18	0	36	59	30.5%	8.5%
2015	Female	0	0	0	2	2	0	4	0	22	30	13.3%	13.3%
	Male	0	0	0	0	0	0	5	1	20	26	19.2%	0.0%
	Total	0	0	0	2	2	0	9	1	42	56	16.1%	7.1%
2016	Female	0	0	0	1	2	0	4	1	19	27	14.8%	11.1%
	Male	0	1	1	1	0	0	8	0	17	28	28.6%	10.7%
	Total	0	1	1	2	2	0	12	1	36	55	21.8%	10.9%
2017	Female	0	1	1	1	1	0	16	2	18	40	40.0%	50.0%
	Male	0	0	0	0	2	0	8	1	16	27	29.6%	37.0%
	Total	0	1	1	1	3	0	24	3	34	67	35.8%	44.8%
2018	Female	0	1	1	1	0	0	16	3	18	40	40.0%	47.5%
	Male	0	0	0	0	0	0	8	3	20	31	25.8%	25.8%
	Total	0	1	1	1	0	0	24	6	38	71	33.8%	38.0%

Total Enrollment by Gender and Ethnicity
(Reference: IPEDS Fall Enrollment) *NHPI-Native Hawaiian and Pacific Islander

		American Indian	Asian	Black	Hispanic	Multi-race	NHPI*	Nonresident Alien	Unknown	White	Total	Total % Non-Residents	% Students of Color
2014	Female	0	72	53	81	62	0	96	6	1,513	1,883	5.1%	14.2%
	Male	1	55	61	107	62	0	126	8	1,321	1,741	7.2%	16.4%
	Total	1	127	114	188	124	0	222	14	2,834	3,624	6.1%	15.3%
2015	Female	0	96	55	98	72	0	99	7	1,463	1,890	5.2%	17.0%
	Male	1	60	65	122	55	0	134	6	1,292	1,735	7.7%	17.5%
	Total	1	156	120	220	127	0	233	13	2,755	3,625	6.4%	17.2%
2016	Female	0	101	53	109	69	0	104	5	1,399	1,840	5.7%	18.0%
	Male	1	69	71	117	63	0	142	2	1,321	1,786	8.0%	18.0%
	Total	1	170	124	226	132	0	246	7	2,720	3,626	6.8%	18.0%
2017	Female	0	113	59	121	77	0	108	9	1,380	1,867	5.8%	19.8%
	Male	0	72	69	129	73	0	144	2	1,322	1,811	8.0%	18.9%
	Total	0	185	128	250	150	0	252	11	2,702	3,678	6.9%	19.4%
2018	Female	1	123	54	123	91	0	126	9	1,348	1,875	6.7%	20.9%
	Male	1	81	74	126	70	0	141	4	1,296	1,793	7.9%	19.6%
	Total	2	204	128	249	161	0	267	13	2,644	3,668	7.3%	20.3%

COMPLETIONS BY FIELD OF STUDY

COMPLETIONS BY FIELD OF STUDY BUCKNELL UNIVERSITY

Completions by Field of Study For First Major
By Category

	2013-14		2014-15		2015-16		2016-17		2017-18	
	Undergraduate	Graduate	Undergraduate	Graduate	Undergraduate	Graduate	Undergraduate	Graduate	Undergraduate	Graduate
Area and ethnic studies	7		6		9		8		4	
Biological/life sciences	118	3	108	3	102	5	115	3	92	1
Business/marketing	119		131		128		126		138	
Computer and info. Sciences	7		15		17		14		18	
Education	30	4	25	3	32	10	20	1	31	5
Engineering/engineering technologies	161	7	147	8	156	9	167	6	167	3
English	41	3	30	2	48	4	30	4	31	5
Foreign languages and literature	16		31		15		15		15	
History	15		17		16		9		14	
Interdisciplinary studies	5		6		6		14		11	
Liberal arts/general studies	1		1		2		2			
Mathematics	16		10		9	1	16		11	
Natural resources/Envir. science	11		11		15		16		14	
Philosophy, religion, theology	16		10		7				6	
Physical sciences	19	5	30	5	22	4	30	5	24	1
Psychology	47	4	51	1	60	3	64	2	53	1
Social sciences	206		225		192		202		205	
Visual and performing arts	18		14		15		19		18	
Grand Total	853	26	868	22	851	36	867	21	852	16

Completions by Field of Study For Second Major
By Category

	2013-14	2014-15	2015-16	2016-17	2017-18
	Undergraduate	Undergraduate	Undergraduate	Undergraduate	Undergraduate
Area and ethnic studies	9	5	18	7	16
Biological/life sciences	3	4	2	2	4
Business/marketing	6	8	4	7	8
Computer and info. Sciences	3				2
Education	6	2	3	3	
English	7	12	8	9	8
Foreign languages and literature	22	31	29	34	25
History	8	5	8	10	10
Interdisciplinary studies	2				1
Liberal arts/general studies	3	1	1		3
Mathematics	2	1		5	1
Natural resources/Envir. science	4	6	5	8	9
Philosophy, religion, theology	10	9	9	9	2
Physical sciences	2	1	5	2	4
Psychology	28	13	33	7	12
Social sciences	67	73	55	66	57
Visual and performing arts	12	10	6	4	8
Grand Total	194	181	186	173	170

**Completions by Field of Study For First Major
By Gender and Race/Ethnicity**

	2013-14		2014-15		2015-16		2016-17		2017-18	
	Undergraduate	Graduate	Undergraduate	Graduate	Undergraduate	Graduate	Undergraduate	Graduate	Undergraduate	Graduate
Female	454	14	445	9	481	20	462	8	445	10
Male	399	12	423	13	370	16	405	13	407	6
Grand Total	853	26	868	22	851	36	867	21	852	16
	Undergraduate	Graduate	Undergraduate	Graduate	Undergraduate	Graduate	Undergraduate	Graduate	Undergraduate	Graduate
American Indian/Alaska							1			
Asian	27	2	28		33	1	33		30	
Black/African American	30	1	30	1	22	1	31		27	
Hispanic/Latino	40	1	46	1	40	1	50		41	1
Multiple Races	16		27		34	1	29	1	29	2
Non-Resident Alien	52	4	43	3	40	2	47	2	41	4
Unknown	10	1	8	1	1	2	3		2	
White	678	17	686	16	681	28	673	18	682	9
Grand Total	853	26	868	22	851	36	867	21	852	16

**Completions by Field of Study For Second Major
By Gender and Race/Ethnicity**

	2013-14	2014-15	2015-16	2016-17	2017-18
	Undergraduate	Undergraduate	Undergraduate	Undergraduate	Undergraduate
Female	130	104	135	110	106
Male	64	77	51	63	64
Grand Total	194	181	186	173	170
	Undergraduate	Undergraduate	Undergraduate	Undergraduate	Undergraduate
Asian	3	3	9	6	4
Black/African American	6	6	9	4	6
Hispanic/Latino	8	18	7	17	8
Multiple Races	4	3	6	6	9
Non-Resident Alien	10	7	6	7	9
Unknown		2			
White	163	142	149	133	134
Grand Total	194	181	186	173	170

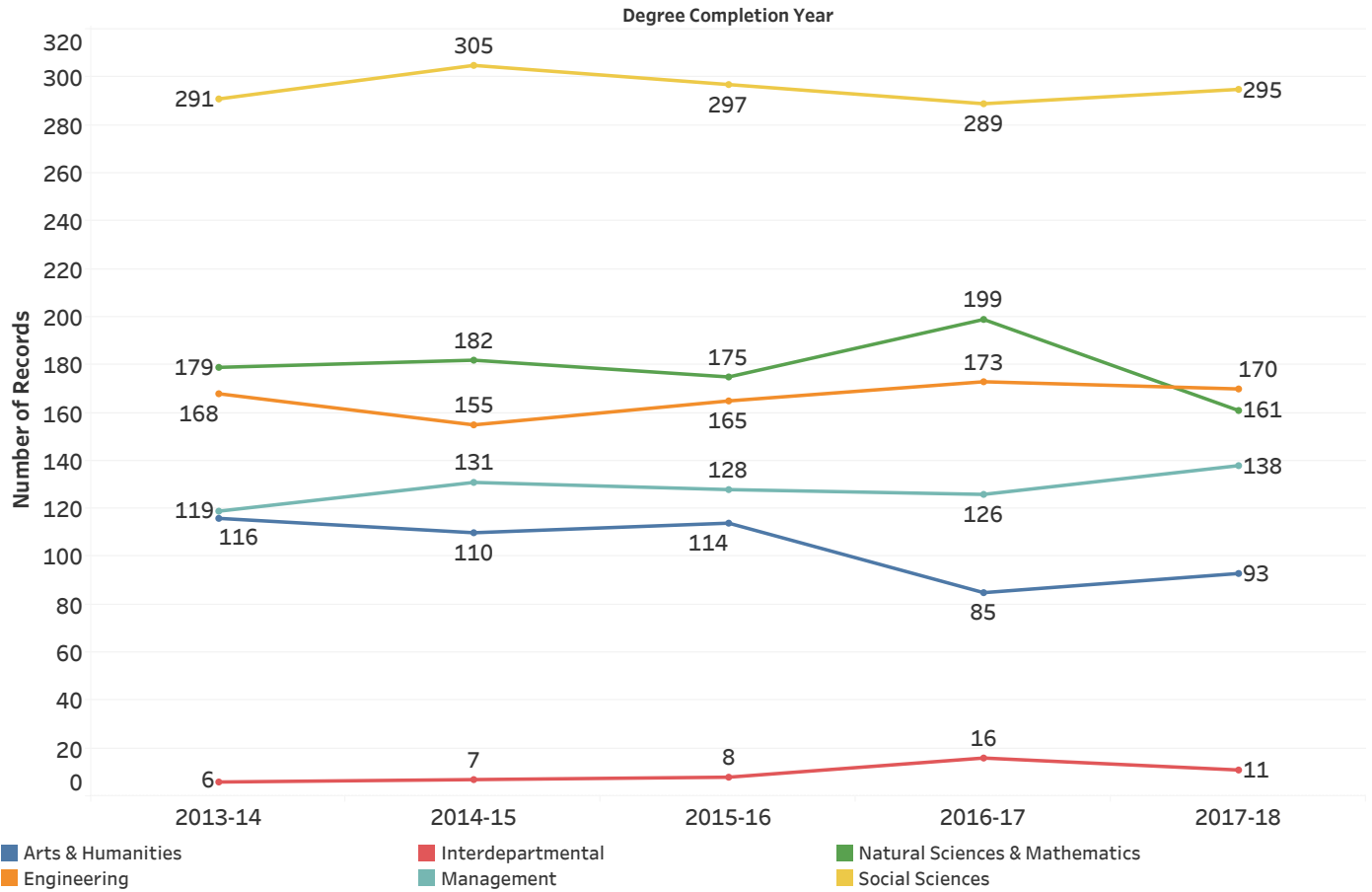
Completions by Broad Disciplinary Category For First Major

	2013-14		2014-15		2015-16		2016-17		2017-18	
	Undergraduate	Graduate	Undergraduate	Graduate	Undergraduate	Graduate	Undergraduate	Graduate	Undergraduate	Graduate
Arts & Humanities	113	3	108	2	110	4	81	4	88	5
Engineering	161	7	147	8	156	9	167	6	167	3
Interdepartmental	6		7		8		16		11	
Management	119		131		128		126		138	
Natural Sciences & Mathematics	171	8	174	8	165	10	191	8	159	2
Social Sciences	283	8	301	4	284	13	286	3	289	6
Grand Total	853	26	868	22	851	36	867	21	852	16

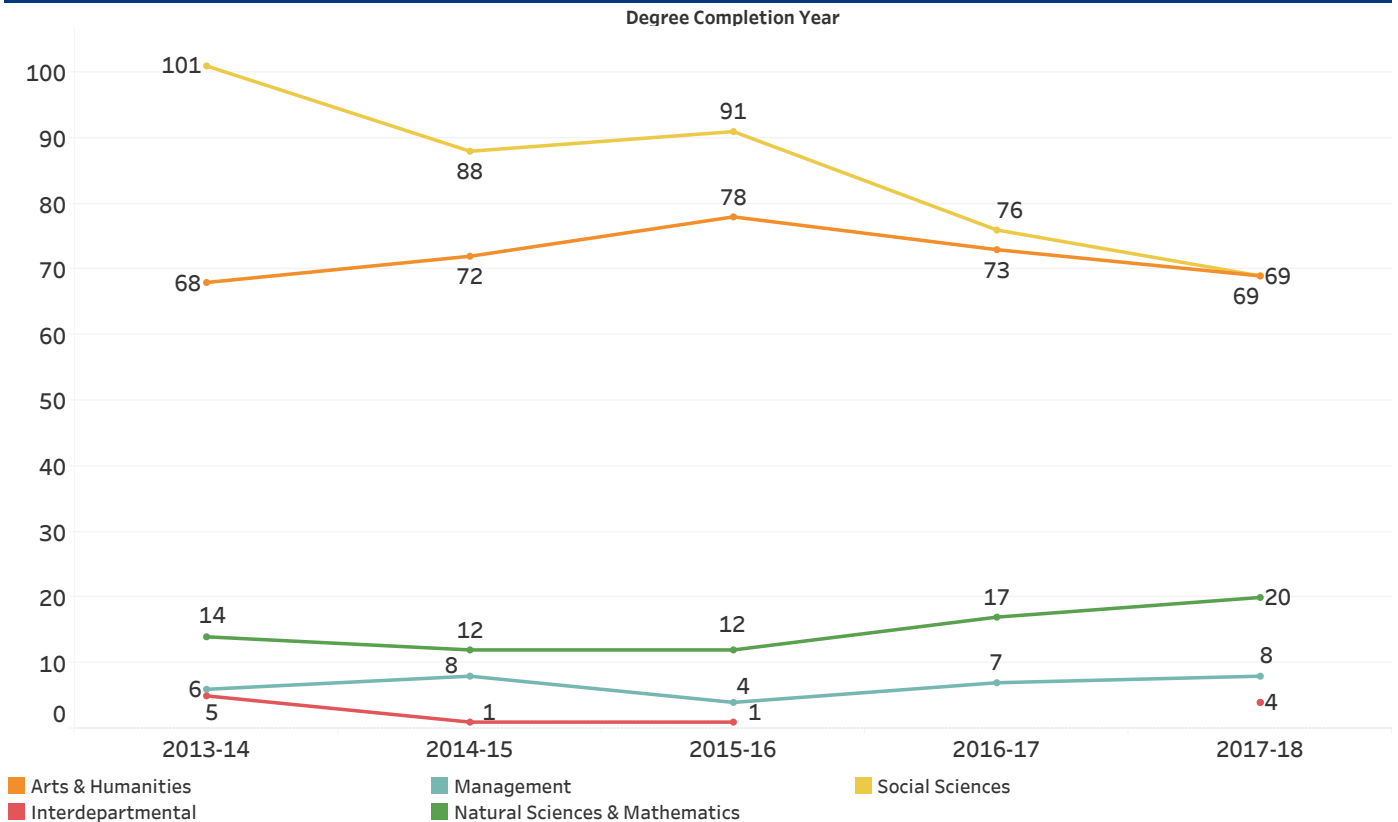
Completions by Broad Disciplinary Category For Second Major

	2013-14	2014-15	2015-16	2016-17	2017-18
	Undergraduate	Undergraduate	Undergraduate	Undergraduate	Undergraduate
Arts & Humanities	68	72	78	73	69
Interdepartmental	5	1	1		4
Management	6	8	4	7	8
Natural Sciences & Mathematics	14	12	12	17	20
Social Sciences	101	88	91	76	69
Grand Total	194	181	186	173	170

Head Counts of Undergraduate Completions by Broad Disciplinary Category - First Major



Head Counts of Undergraduate Completions by Broad Disciplinary Category - Second Major



ACADEMICS, CO-CURRICULAR AND EXTRACURRICULAR ACTIVITIES

ACADEMICS, CO-CURRICULAR AND EXTRACURRICULAR ACTIVITIES

BUCKNELL UNIVERSITY

Undergraduate Majors by College and Gender

College	Department	Major Description	Year / Gender					
			2017		Total	2018		Total
			F	M		F	M	
College of Arts & Sciences	Africana Studies	Africana Studies		1	1	1	3	4
	Animal Behavior	Animal Behavior	33	6	39	31	4	35
	Art & Art History	Art History	9		9	8	1	9
		Studio Art	6	1	7	4	1	5
	Biology	Biology	144	68	212	156	62	218
		Cell Biology/Biochemistry	45	25	70	48	24	72
	Chemistry	Chemistry	31	10	41	30	15	45
	Classics&Ancient Medit Studies	Classics & Ancient Med Studies	4	8	12	5	8	13
	Computer Science	Computer Science	11	43	54	13	47	60
	East Asian Studies	East Asian Studies	4	1	5	4	1	5
	Economics	Economics	52	115	167	35	85	120
	Education	Early Childhood Education	42		42	38		38
		Education	27	1	28	19	6	25
	English	English	1		1			
		English - Creative Writing	15	4	19	12	6	18
		English - Film/Media Studies	4	9	13	3	6	9
		English - Literary Studies	13	3	16	20	4	24
	Environ. Studies & Sciences	Environmental Studies	14	17	31	15	20	35
	Geography	Geography	5	6	11	2	5	7
	Geology & Environ Geosciences	Environmental Geosciences	4	3	7	3	3	6
		Geology	6	10	16	6	7	13
	History	History	11	14	25	8	23	31
	Humanities	Comparative Humanities		2	2		2	2
	Interdepartmental	College Major		1	1			
		Interdepartmental	15	6	21	14	6	20
	Interdisc Studies: Math & Econ	Interdisc Studies Econ & Math	13	26	39	15	20	35
	International Relations	International Relations	27	21	48	24	21	45
	Languages/Cultures/Linguistics	French	8	1	9	9		9
		German	3		3	2		2
		Italian Studies	4	1	5	6	2	8
		Linguistics	5		5	8	1	9
	Mathematical Economics	Mathematical Economics	8	6	14	13	26	39
	Mathematics	Applied Mathematical Sciences	19	9	28	14	12	26
		Mathematics	21	24	45	19	19	38
	Music	Music	7	2	9	3	4	7
		Music Education	8		8	8	1	9
		Vocal Performance	2		2			
	Neuroscience	Neuroscience	53	26	79	70	22	92
	Philosophy	Philosophy	6	9	15	8	12	20
	Physics	Biophysics					1	1
		Physics	8	27	35	8	22	30
	Political Science	Political Science	52	53	105	52	75	127
	Psychology	Psychology	83	25	108	80	20	100
	Religious Studies	Religion	2	1	3	1	4	5
	Sociology and Anthropology	Anthropology	9	1	10	9	2	11
		Sociology	14	12	26	17	9	26
	Spanish	Spanish	10	4	14	13	8	21
	Theatre and Dance	Theatre	7	1	8	6	1	7
	Undeclared Department	Undeclared	470	417	887	503	374	877
	Women's and Gender Studies	Women's and Gender Studies	3		3	6	1	7
	Total		1,338	1,020	2,358	1,369	996	2,365
College of Engineering	Biomedical Engineering	Biomedical Engineering	33	32	65	35	28	63
	Chemical Engineering	Chemical Engineering	47	55	102	48	54	102
	Civil & Environmental Engr.	Civil Engineering	33	74	107	30	71	101
		Environmental Engineering	21	16	37	21	14	35
	Computer Science	Computer Sci. & Engineering	23	80	103	25	82	107
	Electrical & Computer Engr.	Computer Engineering	15	36	51	8	26	34
		Electrical Engineering	15	52	67	14	49	63
	Mechanical Engineering	Mechanical Engineering	32	118	150	25	107	132
	Undeclared Engineering	Undeclared Engineering	8	18	26	11	30	41
	Total		227	481	708	217	461	678
Freeman College of Management	Management	Acct & Financial Management	40	92	132	41	92	133
		Global Management	25	13	38	17	12	29
		Managing for Sustainability	16	4	20	16	9	25
		Markets, Innovation & Design	51	20	71	48	20	68
	Undeclared Management	Undeclared Management	130	154	284	127	172	299
	Total		262	283	545	249	305	554
Grand Total			1,827	1,784	3,611	1,835	1,762	3,597

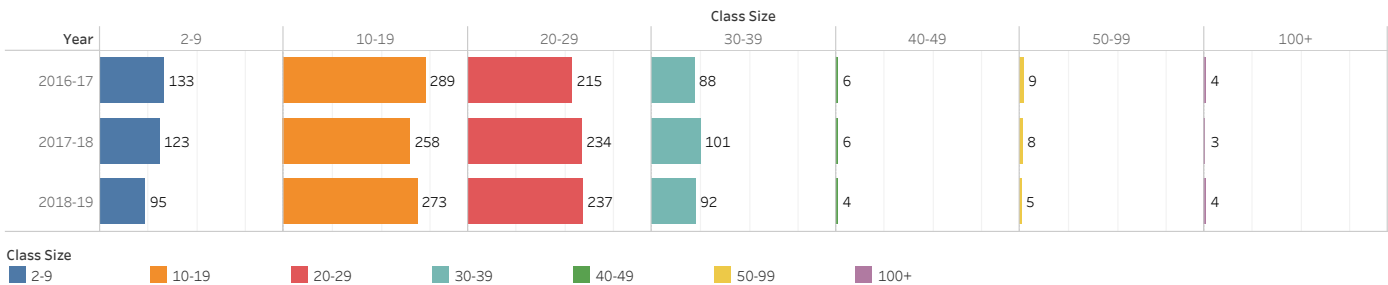
Undergraduate Class Size

To calculate class sizes, we used the Common Data Set (CDS) definition which is used for our external reports to college guides and rankings.

A class section is an organized course offered for credit, identified by discipline and number, meeting at a stated time or times in a classroom or similar setting, and not a subsection such as a laboratory or discussion session. Undergraduate class sections are defined as any sections in which at least one degree-seeking undergraduate student is enrolled for credit. Exclude distance learning classes and noncredit classes and individual instruction such as dissertation or thesis research, music instruction, or one-to-one readings. Exclude students in independent study, co-operative programs, internships, foreign language taped tutor sessions, practicums, and all students in one-on-one classes. Each class section should be counted only once and should not be duplicated because of course catalog cross-listings.

Number of Class Sections with Undergraduates Enrolled in the Fall of 2016, 2017, and 2018

Class Size	Year			Grand Total
	2016-17	2017-18	2018-19	
2-9	133	123	95	351
10-19	289	258	273	820
20-29	215	234	237	686
30-39	88	101	92	281
40-49	6	6	4	16
50-99	9	8	5	22
100+	4	3	4	11
Grand Total	744	733	710	2,187



Number of Class Sections with Undergraduates Enrolled by College in the Fall of 2018

Size	College of Arts & Sciences		College of Engineering		Freeman College of Management		Grand Total	
	Count	%	Count	%	Count	%	Count	%
2-9	88	16%	5	6%	2	3%	95	13%
10-19	211	38%	41	46%	21	31%	273	38%
20-29	160	29%	35	39%	42	63%	237	33%
30-39	83	15%	8	9%	1	1%	92	13%
40-49	4	1%					4	1%
50-99	5	1%					5	1%
100+	3	1%			1	1%	4	1%
Grand Total	554	100%	89	100%	67	100%	710	100%

Number of Class Sections with Undergraduates Enrolled by Division in the Fall of 2018

Size	Arts and Humanities		Natural Sciences		Social Sciences		Engineering		Management		Unassigned		Grand Total	
	Count	%	Count	%	Count	%	Count	%	Count	%	Count	%	Count	%
2-9	53	27%	13	10%	22	12%	5	6%	2	3%			95	13%
10-19	78	39%	42	32%	58	32%	41	46%	21	31%	33	77%	273	38%
20-29	46	23%	58	45%	54	30%	35	39%	42	63%	2	5%	237	33%
30-39	19	10%	10	8%	46	25%	8	9%	1	1%	8	19%	92	13%
40-49	1	1%			3	2%							4	1%
50-99	1	1%	4	3%									5	1%
100+			3	2%					1	1%			4	1%
Grand Total	198	100%	130	100%	183	100%	89	100%	67	100%	43	100%	710	100%

Undergraduate Off Campus Experience by Program

Data Source: From Bucknell Data Warehouse pulled by Cognos as of 10/2/2018

Off-Campus Study numbers were retrieved from the student record system named Horizons. The big increase of off-campus study in 2017 and 2018 summer was tied to two factors: Freeman College of Management and ECON students taking part in the LSE summer school program and a very large number of Chinese International Students taking courses on summer programs at home in China.

Program	AY 2013-2014 Fall	AY 2013-2014 Spring	AY 2013-2014 Summer	AY 2014-2015 Fall	AY 2014-2015 Spring	AY 2014-2015 Summer	AY 2015-2016 Fall	AY 2015-2016 Spring	AY 2015-2016 Summer	AY 2016-2017 Fall	AY 2016-2017 Spring	AY 2016-2017 Summer	AY 2017-2018 Fall	AY 2017-2018 Spring	AY 2017-2018 Summer
Associated Kyoto Program	2	2		2	2		4	2		1			2	2	
Bard CEP	1	1													
Bucknell en Espana (Granada)	18	18		12	13		10	25	0	8	18	0	6	21	
Bucknell en France	9	12	0	9	9	0	13	13	0	12	15	0	6	13	
Bucknell in Athens					6			1			4			11	
Bucknell in Barbados			20			17			14			10			
Bucknell in D.C.					7			2							
Bucknell in Ghana								11						10	
Bucknell in Nicaragua			17						17			15			
Bucknell in South Africa			18									20			20
Bucknell London Semester	10	12		19	15	0	14	13	0	10	16		19	14	
Caribbean						11			6			7			8
Denmark Program			12			11			11			13			13
ENGR 290			27			45			33			36			17
Hong Kong Exchange Program	1	2		1											
Japan									8						11
London Internship Program						11			12						7
New Orleans			7			9			15			9			
Northern Ireland Program						13									
Nottingham Exchange Program							1								
Off Campus Study	82	126	31	63	150	21	80	160	22	90	184	67	62	189	69
Taste of France Program												12			12
Virgin Islands Program			26			24			27			27			
Total	123	173	158	106	202	162	122	227	165	121	237	216	95	260	157

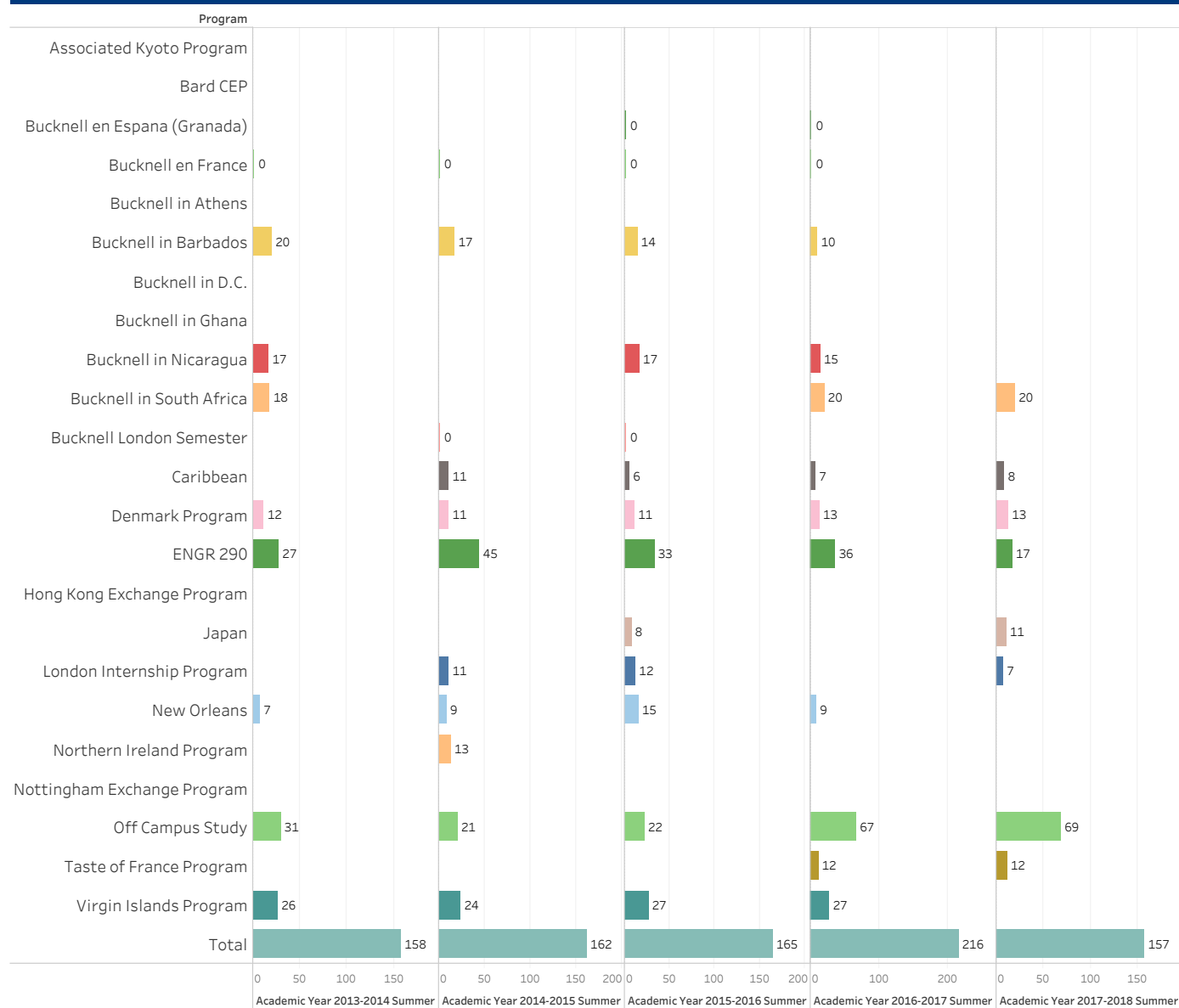
Undergraduate Off Campus Experience by Program Fall Term (2013-2017)



Undergraduate Off Campus Experience by Program Spring Term (2013-2017)



Undergraduate Off Campus Experience by Program Summer Term (2013-2017)



Participation Rate of Off Campus Experience by Graduating Senior Class

* Off campus experiences exclude main campus study and non traditional study. This is an unduplicated count . Since some summer off campus programs do not require registration, listed number may not include students who had those summer experiences.

** Total number of graduated seniors is based on a 12-month time period beginning July 1 of the previous calendar year and ending June 30 of the current calendar year, which is consistent with IPEDS reporting. The total number indicates seniors who graduated in July, January, and May at Bucknell.

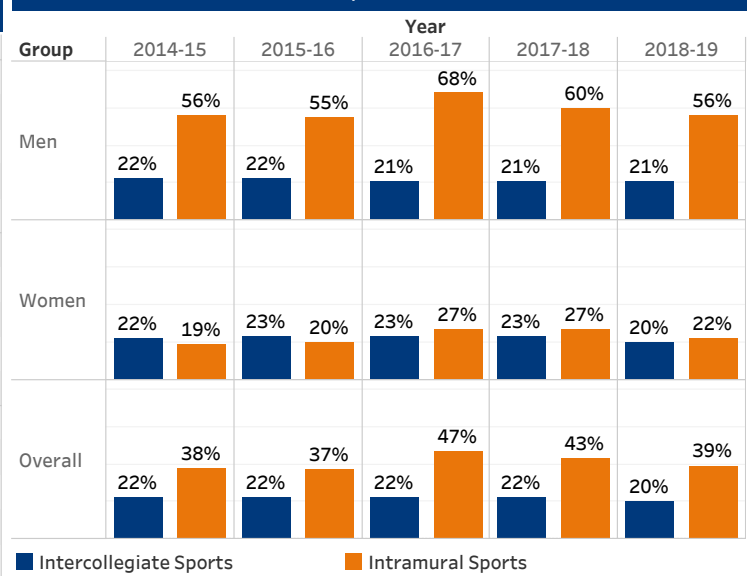
	Seniors with Off Campus Experiences*	Sum of Total Graduated Seniors**	Participation Rate
2012-13	363	850	43%
2013-14	363	853	43%
2014-15	352	868	41%
2015-16	395	851	46%
2016-17	422	867	49%
2017-18	425	852	50%
6 year Average	387	857	45%

Student Athletic Participation

Data source: from College Guide Survey reported by the Athletic office

Group	Year	Intercollegiate Sports	Intramural Sports
Men	2014-15	22%	56%
	2015-16	22%	55%
	2016-17	21%	68%
	2017-18	21%	60%
	2018-19	21%	56%
Women	2014-15	22%	19%
	2015-16	23%	20%
	2016-17	23%	27%
	2017-18	23%	27%
	2018-19	20%	22%
Overall	2014-15	22%	38%
	2015-16	22%	37%
	2016-17	22%	47%
	2017-18	22%	43%
	2018-19	20%	39%

Student Athletic Participation Trend Over Five Years



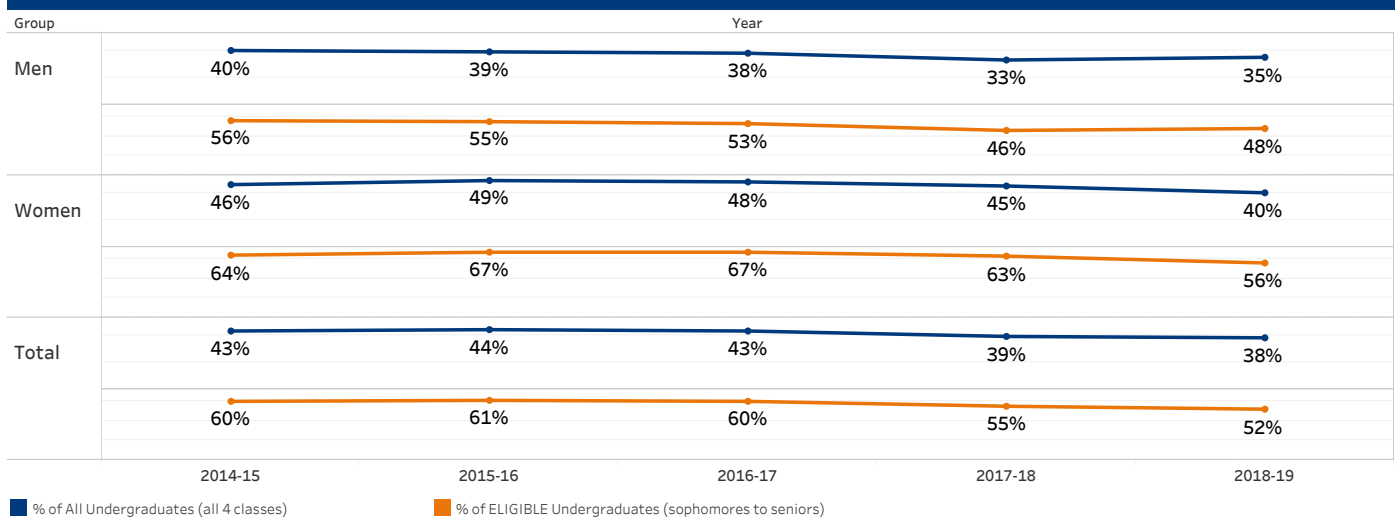
Student Greek Participation

Data source: from OIR&P frozen fall enrollment files

Kappa Sigma Fraternity was excluded since 2017 fall; Four classes were included as eligible students: sophomore, junior, senior, and 4th year of 5-year Engineering.

Group	Year	Number of Greek Organizations (Active)	Number of Students in Active Greek Organizations (includes fall rush)	% of All Undergraduates (all 4 classes)	% of ELIGIBLE Undergraduates (sophomores to seniors)
Men	2014-15	11	689	40%	56%
	2015-16	8	668	39%	55%
	2016-17	9	664	38%	53%
	2017-18	8	593	33%	46%
	2018-19	9	623	35%	48%
Women	2014-15	8	857	46%	64%
	2015-16	8	913	49%	67%
	2016-17	9	875	48%	67%
	2017-18	9	831	45%	63%
	2018-19	8	727	40%	56%
Total	2014-15	19	1,546	43%	60%
	2015-16	16	1,581	44%	61%
	2016-17	18	1,539	43%	60%
	2017-18	17	1,424	39%	55%
	2018-19	17	1,350	38%	52%

Student Greek Participation Trend Over Five Years



STUDENT SUCCESS

STUDENT SUCCESS

BUCKNELL UNIVERSITY

Cohort Retention and Graduation Rates

*Adjusted for permissible omissions or changes in Banner data

Class of	Entered Fall	First-Year Cohort	Returned Sophomore Year	Retention Rate	Graduated Within 4 Years	Graduation Rate in 4 Yrs	Graduated Within 6 Years	Graduation Rate in 6 yrs
2003	1999	889	836	94%	756	85%	797	90%
2004	2000	914	862	94%	773	85%	816	89%
2005	2001	913	863	95%	784	86%	817	89%
2006	2002	914	859	94%	779	85%	814	89%
2007	2003	906	864	95%	794	88%	815	90%
2008	2004	906*	867	95%	817	89%	836	92%
2009	2005	920	883	96%	804	87%	837	91%
2010	2006	922*	868	94%	793	86%	834	90%
2011	2007	887	843	95%	774	87%	805	91%
2012	2008	956*	896	94%	814	85%	847	89%
2013	2009	920	865	94%	780	85%	827	90%
2014	2010	929	870*	94%	782	84%	819	88%
2015	2011	916	873	95%	790	86%	828	90%
2016	2012	915*	861	94%	774	85%	809	88%
2017	2013	933	869	93%	807	86%		
2018	2014	938*	877	93%	784	84%		
2019	2015	938	864	92%				
2020	2016	950	894	94%				
2021	2017	973	898	92%				

A Summary of Retention Data _First-Time First-Year Students among Cohorts Entering in ---						
	2013	2014	2015	2016	2017	Grand Total
# of Initial Entering Cohort	933	938	938	950	973	4,732
# of Returning Students	869	876	864	894	898	4,401
Fall to Fall Retention Rate	93%	93%	92%	94%	92%	93%
Gender	2013	2014	2015	2016	2017	Grand Total
Female	94%	95%	93%	93%	92%	93%
Male	93%	92%	91%	95%	92%	93%
Citizenship	2013	2014	2015	2016	2017	Grand Total
Dual Citizenship (UF)	93%	89%	94%	93%	90%	92%
Nonresident Alien (NA)	91%	98%	100%	96%	92%	95%
Resident Alien (RA)	100%	88%	100%	100%	86%	94%
US	93%	93%	91%	94%	93%	93%
College	2013	2014	2015	2016	2017	Grand Total
College of Arts & Sciences	92%	92%	92%	94%	92%	92%
College of Engineering	96%	95%	97%	98%	93%	96%
Freeman College of Management	92%	97%	87%	89%	95%	92%
Race/Ethnicity	2013	2014	2015	2016	2017	Grand Total
American Indian or Alaska Native	100%					100%
Asian	93%	93%	95%	94%	95%	94%
Black/African American	93%	93%	95%	94%	94%	94%
Hispanic/Latino	87%	92%	92%	98%	92%	92%
Multiple Races	81%	93%	95%	94%	94%	91%
Non-Resident Alien	91%	98%	100%	96%	92%	95%
Unknown	100%	100%	100%	100%	100%	100%
White	94%	93%	91%	94%	92%	93%
First Generation	2013	2014	2015	2016	2017	Grand Total
No	93%	93%	92%	94%	92%	93%
Yes	93%	93%	93%	93%	91%	93%
Posse	2013	2014	2015	2016	2017	Grand Total
Not POSSE	93%	93%	92%	94%	92%	93%
POSSE	93%	97%	97%	100%	97%	97%
Pell	2013	2014	2015	2016	2017	Grand Total
No PELL	93%	94%	92%	94%	93%	93%
PELL	95%	89%	93%	94%	90%	92%

A Summary of Six Year Graduation Rates Among Cohorts Entering In---

1. College is based on information at time of first enrolled.

2. Pell grant recipients in graduation rate table are first-year cohort students who received a Pell grant during their undergraduate education.

	Fall 2008	Fall 2009	Fall 2010	Fall 2011	Fall 2012	Grand Total
# of Initial Entering Cohort	956	920	929	916	915	4,636
# of Graduated Students in Six Years	847	827	819	828	809	4,130
Six Year Graduation Rate	89%	90%	88%	90%	88%	89%
Gender	Fall 2008	Fall 2009	Fall 2010	Fall 2011	Fall 2012	Grand Total
Female	88%	91%	89%	91%	91%	90%
Male	89%	89%	87%	90%	85%	88%
Citizenship	Fall 2008	Fall 2009	Fall 2010	Fall 2011	Fall 2012	Grand Total
Dual Citizenship (UF)	78%	96%	86%	76%	68%	80%
Nonresident Alien (NA)	87%	80%	94%	86%	86%	87%
Resident Alien (RA)	100%	100%	82%	92%	100%	94%
U.S.	89%	90%	88%	91%	89%	89%
Enrolled College	Fall 2008	Fall 2009	Fall 2010	Fall 2011	Fall 2012	Grand Total
College of Arts & Sciences	88%	90%	87%	90%	88%	89%
College of Engineering	91%	90%	91%	91%	89%	90%
Freeman College of Management	91%	91%	89%	92%	93%	91%
Race/Ethnicity	Fall 2008	Fall 2009	Fall 2010	Fall 2011	Fall 2012	Grand Total
American Indian or Alaska Native		100%				100%
Asian	90%	92%	83%	86%	92%	89%
Black or African American	94%	84%	84%	92%	83%	87%
Hispanic or Latino	71%	90%	88%	87%	84%	84%
Multiple Races	91%	100%	83%	85%	88%	89%
Non-Resident Alien	87%	80%	94%	86%	86%	87%
Unknown	87%	92%	59%	100%	100%	82%
White	89%	90%	89%	91%	89%	90%
First Generation	Fall 2008	Fall 2009	Fall 2010	Fall 2011	Fall 2012	Grand Total
No	90%	90%	89%	91%	89%	90%
Yes	82%	92%	81%	86%	86%	85%
PELLGrant	Fall 2008	Fall 2009	Fall 2010	Fall 2011	Fall 2012	Grand Total
No PELL	89%	90%	88%	91%	88%	89%
PELL	88%	92%	87%	89%	89%	89%

Athletes' Graduation Rate

Data resource for athletes' graduation rate: NCSS Graduation Success Rate website at web3.ncaa.org/aprsearch/gsrsearch

NCAA definition of student-athletes: Athletes received athletics aid from the school for any period of time during their entering year. [Note: Athletics aid is a grant, scholarship, tuition waiver or other assistance from a college or university that is awarded on the basis of a student's athletics ability.]

	Fall 2007	Fall 2008	Fall 2009	Fall 2010	Fall 2011	Grand Total
Athletes	88%	88%	97%	86%	86%	90%
Four-Class Average for Athletes	92%	90%	91%	90%	89%	91%

Post Graduation Activity Nine Months after Graduation

Data from Career Development Center Annual Postgraduate Report of Activity

* 97% of the class of 2017 were employed or in graduate school or other specific activities. A total of 3% were still seeking employment.

** The top 2017 employers with the most accepted offers include: Accenture, Amazon, Amazon Robotics, Atria, Clark Construction, Crossix Solutions, Deloitte, ESPN, Fidelity Investments, Goldman Sachs, IBM, Memorial Sloan Kettering Cancer Center, Nielsen, Peace Corps, Pratt & Whitney, PwC, RSM, SEI, Success Academy Charter Schools, Teach for America, Teaching Assistant Program in France, UBS Wealth Management, United States Army, Vanguard and Yelp.

*** Response rate: class of 2013 - 99% (841 out of 849), class of 2014 - 99% (822 out of 833), class of 2015 - 99% (858 out of 861), and class of 2016 - 99% (841 out of 846), class of 2017 - 99% (859 out of 867).

Placement	Employed Type/Grad Program	Class of 2013	Class of 2014	Class of 2015	Class of 2016	Class of 2017***
Employed	Business	60%	56%	71%	58%	64%
	Education	12%	9%	9%	8%	9%
	Government and Military	4%	3%	5%	4%	4%
	Non-profit	4%	3%	3%	4%	4%
	Research and Industry	5%	5%	6%	5%	5%
	Unknown/Other	15%	24%	6%	21%	14%
Employed ** Total	Total	71%	72%	75%	71%	74%
In Graduate School	Additional Bachelors	0%	0%			
	Business	6%	6%	7%	3%	7%
	Education	11%	6%	9%	12%	11%
	Engineering	13%	10%	10%	19%	23%
	Humanities and social sciences	15%	14%	15%	20%	15%
	Law	6%	5%	10%	5%	5%
	Medical	22%	20%	23%	19%	17%
	Other	5%	10%	5%	4%	
	Ph.D.	15%	20%			
	Post BAC/certification	2%	3%			
In Graduate School Total	Science	5%	6%	21%	18%	22%
	Total	16%	18%	17%	17%	14%
Both employed and in graduate school	Total	5%	2%	2%	3%	3%
Preparing for Graduate School	Total				5%	4%
Volunteering and Other activity	Total	5%	5%	3%	2%	2%
Total Placement Rate*	Total	97%	97%	97%	98%	97%

Post Graduation Activity _Geographic Location

State/Region	Class of 2013	Class of 2014	Class of 2015	Class of 2016	Class of 2017
Connecticut	7%	5%	6%	7%	7%
Massachusetts	7%	6%	7%	9%	9%
Metro D.C. (MD/VA/DC)	12%	12%	11%	10%	12%
New Jersey	15%	13%	14%	15%	14%
New York	19%	18%	17%	18%	17%
Pennsylvania	22%	21%	23%	17%	20%
Other Northeast	0%	3%	3%	4%	0%
Total Northeast	82%	78%	81%	80%	79%
Region					
Midwest	7%	8%	4%	6%	6%
Southeast	3%	4%	4%	4%	4%
West	6%	8%	8%	8%	8%
International Cities	2%	3%	3%	2%	3%
Total Non-Northeast	18%	22%	19%	20%	21%

Post Graduation Activity _ Salary Offers Accepted for 2017 Graduates

* A total of 59% of the class respondents reported salary information.

Degree	High	LOW	Mean
Bachelor of Science in Business Administration			
Accounting and Financial Management	\$100,000	\$50,000	\$64,413
Global Management	\$76,000	\$40,000	\$58,308
Managing for Sustainability	\$70,000	\$40,000	\$58,167
Markets, Innovation & Design	\$80,000	\$24,000	\$49,883
Bachelor of Science in Education	\$57,000	\$28,000	\$44,200
Bachelor of Arts & Sciences	\$500,000	\$15,000	\$52,491
Bachelor of Science in Engineering			
Biomedical Engineering	\$72,500	\$55,000	\$65,214
Chemical Engineering	\$83,000	\$50,000	\$67,556
Civil Engineering	\$73,000	\$52,000	\$62,074
Computer Engineering	\$102,000	\$72,000	\$86,000
Computer Science & Engineering	\$105,000	\$60,000	\$87,983
Electrical Engineering	\$80,000	\$42,000	\$64,583
Environmental Engineering	\$65,000	\$52,000	\$59,400
Mechanical Engineering	\$84,000	\$40,000	\$65,544
ALL DEGREES COMBINED*	\$500,000	\$15,000	\$56,993

Undergraduate Summer Research Participation in 2014-2018 by Discipline and/or Funding Source

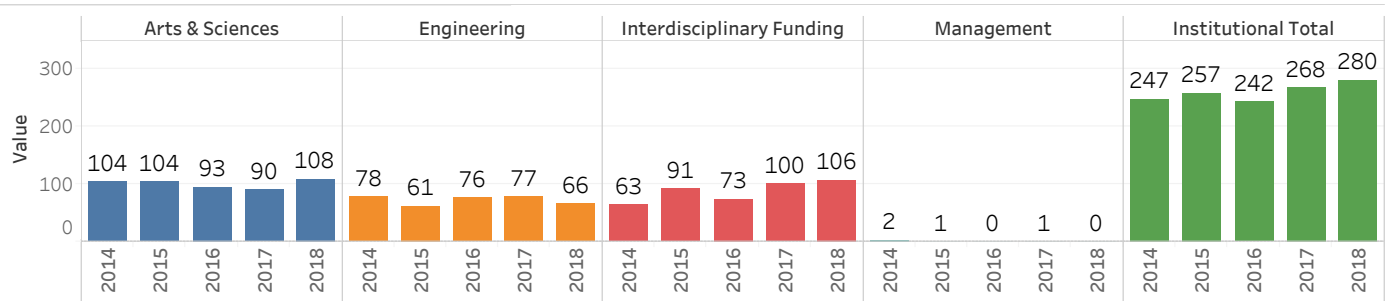
* Computer Science has been included in Engineering since most of UG research funding comes from Engineering

** This program is included in the total counts for the first time in 2017-18, although the program has been running for several years

	2014	2015	2016	2017	2018
Animal Behavior	3	2	0	2	1
Art & Art History	0	0	2	0	2
Biology	37	32	31	21	32
Chemistry	30	25	21	20	20
Classics	2	1	1	0	0
Comparative Humanities	0	2	0	0	1
Economics	2	2	0	5	3
Education	0	2	5	5	4
English	3	3	3	3	1
Environmental Studies	3	0	0	0	3
Geography	0	0	0	0	3
Geology	6	8	4	7	3
History	0	1	2	2	4
International Relations	0	0	0	1	0
Languages, Cultures & Linguistics	0	2	0	0	0
Mathematics	0	0	0	3	4
Music	0	1	1	1	2
Neuroscience	0	1	0	1	1
Philosophy	0	0	1	2	1
Physics/ Astronomy	7	6	11	4	4
Political Science	1	0	0	0	0
Religion	0	0	0	0	2
Psychology	8	15	9	10	11
Sociology & Anthropology	2	1	2	3	5
Theatre	0	0	0	0	0
Management	2	1	0	1	0
Biomedical Engineering	12	5	10	7	7
Chemical Engineering	17	16	7	17	13
Civil Engineering	16	10	10	8	6
Computer Science*	10	9	18	9	10
Electrical Engineering	6	7	5	15	7
Undeclared Engineering	0	4	12	9	16
Mechanical Engineering	17	10	14	12	7
Action Research/A&S	0	3	0	0	0
Action Research/ENGR	0	4	0	0	0
Action Research/MGMT	0	2	0	0	0
Bucknell Geisinger Research Initiative	0	8	4	0	0
Bucknell Institute for Public Policy	11	9	7	14	5
Bucknell Center for Sustainability & The Environment	26	12	3	8	9
Field Research & Teaching Lab	2	0	0	0	0
Jamie Hendry Fund	5	5	1	0	0
Humanities Center	0	0	0	7	13
Institute for Leadership in Sustainable Technology	0	11	13	12	9
Institute for Leadership in Technology & Management**	0	0	0	22	19
Library & Information Technology**	0	0	0	3	9
McKenna Fund	5	7	8	5	5
Provost	0	1	3	1	0
STEM Scholars	14	29	34	28	27
Arts & Sciences	0	0	0	0	9
Cell Bio/ BIO Chem	0	0	0	0	1
Griot Institute	0	0	0	0	1
Total	247	257	242	268	280

Undergraduate Summer Research Participation in 2014-2018 by College

	2014	2015	2016	2017	2018
Arts & Sciences	104	104	93	90	108
Engineering	78	61	76	77	66
Interdisciplinary Funding	63	91	73	100	106
Management	2	1	0	1	0
Institutional Total	247	257	242	268	280



Undergraduate Student Research for Credit

Course Title	Academic Year 2013-2014	Academic Year 2014-2015	Academic Year 2015-2016	Academic Year 2016-2017	Academic Year 2017-2018
Biomedical Engr Research	2	2	3	2	4
Chemical Engineering Research	5	2	4	7	7
Directed Research	2	2	1	4	0
Research	12	6	6	9	6
Undergraduate Research	264	207	206	235	160
Grand Total	285	219	220	257	177

Honors Theses by Academic Division and Gender in 2018

Data from Honors Council

Academic Division	Department	Female	Male	Unknown	Grand Total
Arts & Humanities	East Asian Studies	1			1
	English	4	4		8
	History	2	1		3
	Languages/Cultures/Linguistics	1			1
	Music	1			1
	Philosophy		1		1
	Unknown			1	1
	Total	9	6	1	16
Engineering	Chemical Engineering	4			4
	Civil & Environmental Engr.	1	1		2
	Total	5	1		6
Management	Management	1			1
	Total	1			1
Natural Sciences and Mathematics	Animal Behavior	3			3
	Biology	1	1		2
	Chemistry	1			1
	Computer Science	1			1
	Geology & Environ Geosciences	1	1		2
	Interdisc Studies: Math & Econ		1		1
	Mathematics	1	2		3
	Neuroscience	1			1
	Total	9	5		14
Social Sciences	Economics	2	1		3
	Education	2			2
	Environmental Studies	1			1
	Geography	1			1
	Political Science	3			3
	Psychology	1	1		2
	Total	10	2		12
Grand Total		34	14	1	49

FACULTY & STAFF

FACULTY & STAFF

BUCKNELL UNIVERSITY

Full-Time Faculty Head Counts by Faculty Type and College as of Fall 2018

College	Tenured	Tenure Track	Visiting	Other	Replacement	Grand Total
College of Arts & Sciences	189	84	11	3	19	306
College of Engineering	45	21	4		6	76
Freeman College of Management	15	7	2	3	3	30
Grand Total	249	112	17	6	28	412

Full-Time Faculty Head Counts by Faculty Type and Gender as of Fall 2018

Gender	Tenured	Tenure Track	Visiting	Other	Replacement	Grand Total
F	95	56	7	3	16	177
M	154	56	10	3	12	235
Grand Total	249	112	17	6	28	412

Full-Time Faculty Head Counts by Faculty Type and Race/Ethnicity as of Fall 2018

Race/Ethnicity Description	Tenured	Tenure Track	Visiting	Other	Replacement	Grand Total
American Indian or Alaska Native	2					2
Asian	8	9			2	19
Black or African American	10	4	1			15
Hispanic or Latino	10	6	2			18
Multiple Races	5	1	1			7
Non-Resident Alien	2	15	2		3	22
Unknown	1	4	1		6	12
White	211	73	10	6	17	317
Grand Total	249	112	17	6	28	412

Full-Time Faculty Head Counts by Faculty Type and Recoded Race/Ethnicity as of Fall 2018

Recoded Race/Ethnicity	Tenured	Tenure Track	Visiting	Other	Replacement	Grand Total
Faculty of Color	35	20	4		2	61
No Data	1	4	1		6	12
Non-Resident Alien	2	15	2		3	22
White	211	73	10	6	17	317
Grand Total	249	112	17	6	28	412

Full-Time Faculty Head Counts by Faculty Type and Rank as of Fall 2018

Current Rank	Tenured	Tenure Track	Visiting	Other	Replacement	Grand Total
Assistant Professor		110	15	2	27	154
Associate Professor	126			3		129
Professor	123	2		1		126
Instructor					1	1
Other			2			2
Grand Total	249	112	17	6	28	412

Full-Time Faculty Head Counts by Faculty Type and Terminal Degree as of Fall 2018

Terminal Degree	Tenured	Tenure Track	Visiting	Other	Replacement	Grand Total
No		1		4	2	7
Yes	249	111	17	2	26	405
Grand Total	249	112	17	6	28	412

Full-Time Faculty Head Counts by Faculty Type, College, and Gender as of Fall 2018

College	Gender	Tenured	Tenure Track	Visiting	Other	Replacement	Grand Total
College of Arts & Sciences	F	78	44	5	3	11	141
	M	111	40	6		8	165
	Total	189	84	11	3	19	306
College of Engineering	F	12	8	1		2	23
	M	33	13	3		4	53
	Total	45	21	4		6	76
Freeman College of Management	F	5	4	1		3	13
	M	10	3	1	3		17
	Total	15	7	2	3	3	30
Grand Total		249	112	17	6	28	412

Full-Time Faculty Head Counts by Faculty Type, College, and Race/Ethnicity as of Fall 2018

College	Race/Ethnicity Description	Tenured	Tenure Track	Visiting	Other	Replacement	Grand Total
College of Arts & Sciences	American Indian or Alaska Native	1					1
	Asian	4	8			1	13
	Black or African American	10	4				14
	Hispanic or Latino	8	6	1			15
	Multiple Races	5		1			6
	Non-Resident Alien	2	11	1		2	16
	Unknown		3			3	6
	White	159	52	8	3	13	235
	Total	189	84	11	3	19	306
College of Engineering	American Indian or Alaska Native	1					1
	Asian	4	1				5
	Hispanic or Latino	2		1			3
	Multiple Races		1				1
	Non-Resident Alien		2	1		1	4
	Unknown	1	1	1		1	4
	White	37	16	1		4	58
	Total	45	21	4		6	76
Freeman College of Management	Asian					1	1
	Black or African American			1			1
	Non-Resident Alien		2				2
	Unknown					2	2
	White	15	5	1	3		24
	Total	15	7	2	3	3	30
Grand Total		249	112	17	6	28	412

Full-Time Faculty Head Counts by Faculty Type, College, and Rank as of Fall 2018

College	Current Rank	Tenured	Tenure Track	Visiting	Other	Replacement	Grand Total
College of Arts & Sciences	Assistant Professor		83	9	2	18	112
	Associate Professor	91					91
	Instructor					1	1
	Other			2			2
	Professor	98	1		1		100
	Total	189	84	11	3	19	306
College of Engineering	Assistant Professor		21	4		6	31
	Associate Professor	25					25
	Professor	20					20
	Total	45	21	4		6	76
Freeman College of Management	Assistant Professor		6	2		3	11
	Associate Professor	10			3		13
	Professor	5	1				6
	Total	15	7	2	3	3	30
Grand Total		249	112	17	6	28	412

Full-Time Faculty Head Counts by Rank and Academic Division as of Fall 2018

	Assistant Professor	Associate Professor	Professor	Instructor	Other	Grand Total
Arts & Sciences/Arts	10	10	8			28
Arts & Sciences/Humanities	34	29	35		1	99
Arts & Sciences/Natural Sciences	34	24	29	1		88
Arts & Sciences/Social Sciences	34	28	28		1	91
Engineering	31	25	20			76
Management	11	13	6			30
Grand Total	154	129	126	1	2	412

Full-Time Faculty Head Counts by Rank and Department as of Fall 2018

	Assistant Professor	Associate Professor	Professor	Instructor	Other	Grand Total
Accounting and Financial Management	3	8	2			13
Africana Studies	1		1			2
Art & Art History	3	2	3			8
Biology	7	9	6			22
Biomedical Engineering	1	3	1			5
Chemical Engineering	3	5	5			13
Chemistry	7	3	5			15
Civil and Environmental Engineering	4	6	6			16
Classics and Mediterranean Studies	1	2	2			5
Comparative Humanities Program			2			2
Computer Science	10	3	2			15
East Asian Studies	5	2	1			8
Economics	6	4	7			17
Education	4	5	2			11
Electrical and Computer Engineering	5	3	3			11
English	6	5	13			24
Environmental Studies	2	2				4
Geography	1	2	2		1	6
Geology	1	2	5			8
Global Management	1	2	1			4
History	5	4	3			12
International Relations	4		1			5
Languages, Cultures and Linguistics	9	6	5			20
Latin American Studies	2					2
Management and Organizations	3	2	2			7
Markets, Innovation, and Design	4	1	1			6
Mathematics	14	5	7	1		27
Mechanical Engineering	8	5	3			16
Music	6	4	3			13
Philosophy	1	3	4		1	9
Physics and Astronomy	5	5	6			16
Political Science	5	6	2			13
Psychology	4	3	10			17
Religion	3	2	3			8
Sociology and Anthropology	4	4	4			12
Spanish	3	5	1			9
Theatre and Dance	1	4	2			7
Women's and Gender Studies	2	2				4
Grand Total	154	129	126	1	2	412

**Full-Time Faculty Head Counts by Rank, College, Tenure Status, and Gender as of Fall 2018
(Excluding Replacement Faculty)**

			Assistant Professor	Associate Professor	Professor	Other	Grand Total
College of Arts & Sciences	Tenure Track	F	44				44
		M	39		1		40
	Tenured	F		44	34		78
		M		47	64		111
	Visiting	F	4			1	5
		M	5			1	6
	Other	F	2		1		3
		Total	94	91	100	2	287
College of Engineering	Tenure Track	F	8				8
		M	13				13
	Tenured	F		8	4		12
		M		17	16		33
	Visiting	F	1				1
		M	3				3
	Total	25	25	20		70	
Freeman College of Management	Tenure Track	F	4				4
		M	2		1		3
	Tenured	F		4	1		5
		M		6	4		10
	Visiting	F	1				1
		M	1				1
	Other	F		3			3
		M					
Total	8	13	6		27		
Grand Total			127	129	126	2	384

**Full-Time Faculty Head Counts by Rank, College, and Race/Ethnicity as of Fall 2018
(Excluding Replacement Faculty)**

College	Race/Ethnicity Description	Assistant Professor	Associate Professor	Professor	Other	Grand Total
College of Arts & Sciences	American Indian or Alaska Native			1		1
	Asian	8	3	1		12
	Black or African American	4	4	6		14
	Hispanic or Latino	6	4	4	1	15
	Multiple Races		2	3	1	6
	Non-Resident Alien	12		2		14
	Unknown	3				3
	White	61	78	83		222
	Total	94	91	100	2	287
College of Engineering	American Indian or Alaska Native		1			1
	Asian	1	2	2		5
	Hispanic or Latino	1	1	1		3
	Multiple Races	1				1
	Non-Resident Alien	3				3
	Unknown	2	1			3
	White	17	20	17		54
	Total	25	25	20		70
Freeman College of Management	Black or African American	1				1
	Non-Resident Alien	2				2
	White	5	13	6		24
	Total	8	13	6		27
Grand Total		127	129	126	2	384

**Faculty Head Counts by Rank, College, and Terminal Degree as of Fall 2018
(Excluding Replacement Faculty)**

		Assistant Professor	Associate Professor	Professor	Other	Grand Total
College of Arts & Sciences	No	2		1		3
	Yes	92	91	99	2	284
	Total	94	91	100	2	287
College of Engineering	Yes	25	25	20		70
	Total	25	25	20		70
Freeman College of Management	No		2			2
	Yes	8	11	6		25
	Total	8	13	6		27
Grand Total		127	129	126	2	384

Full-Time Faculty Head Counts by Academic Division from 2014 to 2018 (Excluding Replacements)

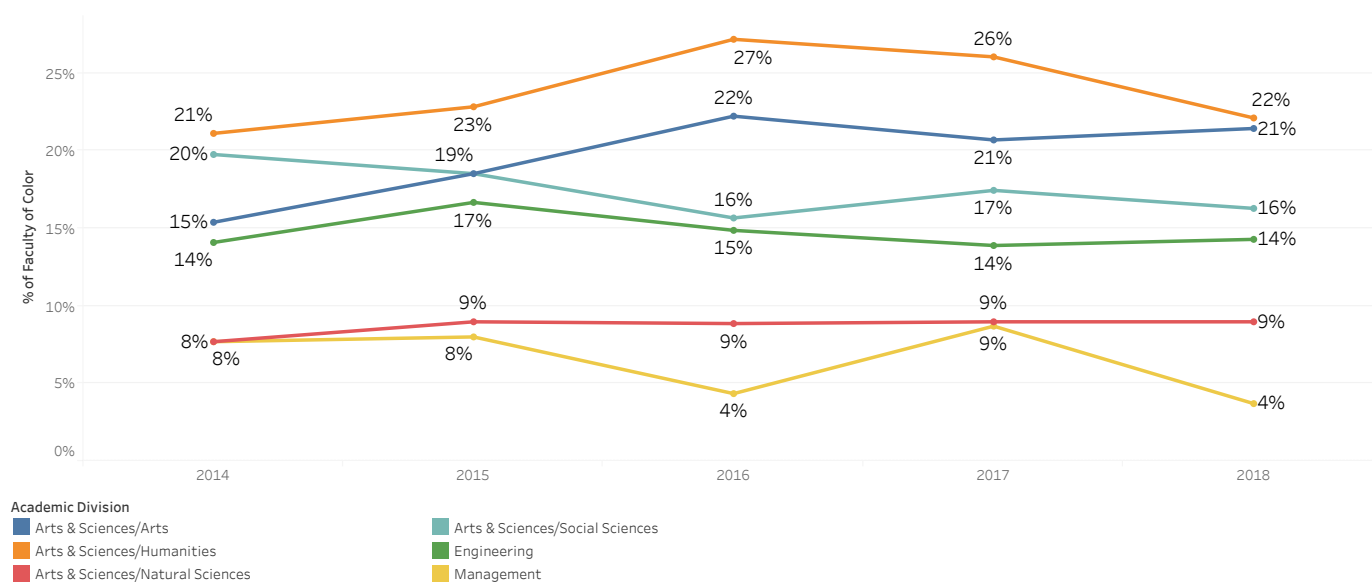
Academic Division	2014	2015	2016	2017	2018	Grand Total
Arts & Sciences/Arts	26	27	27	29	28	137
Arts & Sciences/Humanities	90	92	92	96	95	465
Arts & Sciences/Natural Sciences	78	78	79	78	78	391
Arts & Sciences/Social Sciences	81	81	83	86	86	417
Engineering	71	72	74	72	70	359
Management	26	25	23	23	27	124
Grand Total	372	375	378	384	384	1,893

Full-Time Faculty of Color Head Counts by Academic Division from 2014 to 2018 (Excluding Replacements)

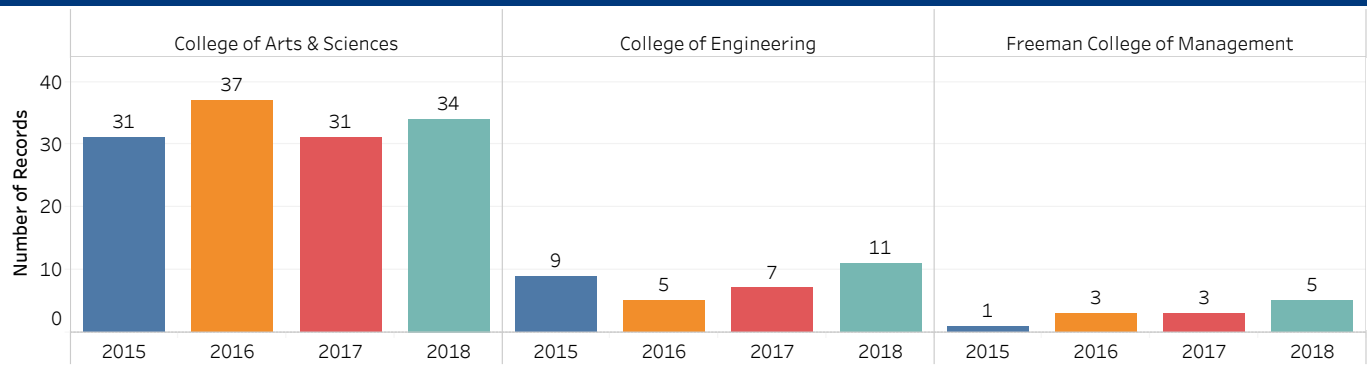
Academic Division	2014	2015	2016	2017	2018	Grand Total
Arts & Sciences/Arts	4	5	6	6	6	27
Arts & Sciences/Humanities	19	21	25	25	21	111
Arts & Sciences/Natural Sciences	6	7	7	7	7	34
Arts & Sciences/Social Sciences	16	15	13	15	14	73
Engineering	10	12	11	10	10	53
Management	2	2	1	2	1	8
Grand Total	57	62	63	65	59	306

% of Full-Time Faculty of Color by Academic Division from 2014 to 2018 (Excluding Replacements)

Academic Division	2014	2015	2016	2017	2018	Grand Total
Arts & Sciences/Arts	15%	19%	22%	21%	21%	20%
Arts & Sciences/Humanities	21%	23%	27%	26%	22%	24%
Arts & Sciences/Natural Sciences	8%	9%	9%	9%	9%	9%
Arts & Sciences/Social Sciences	20%	19%	16%	17%	16%	18%
Engineering	14%	17%	15%	14%	14%	15%
Management	8%	8%	4%	9%	4%	6%
Grand Total	15%	17%	17%	17%	15%	16%



Newly Hired Faculty Head Counts by College from 2015 to 2018



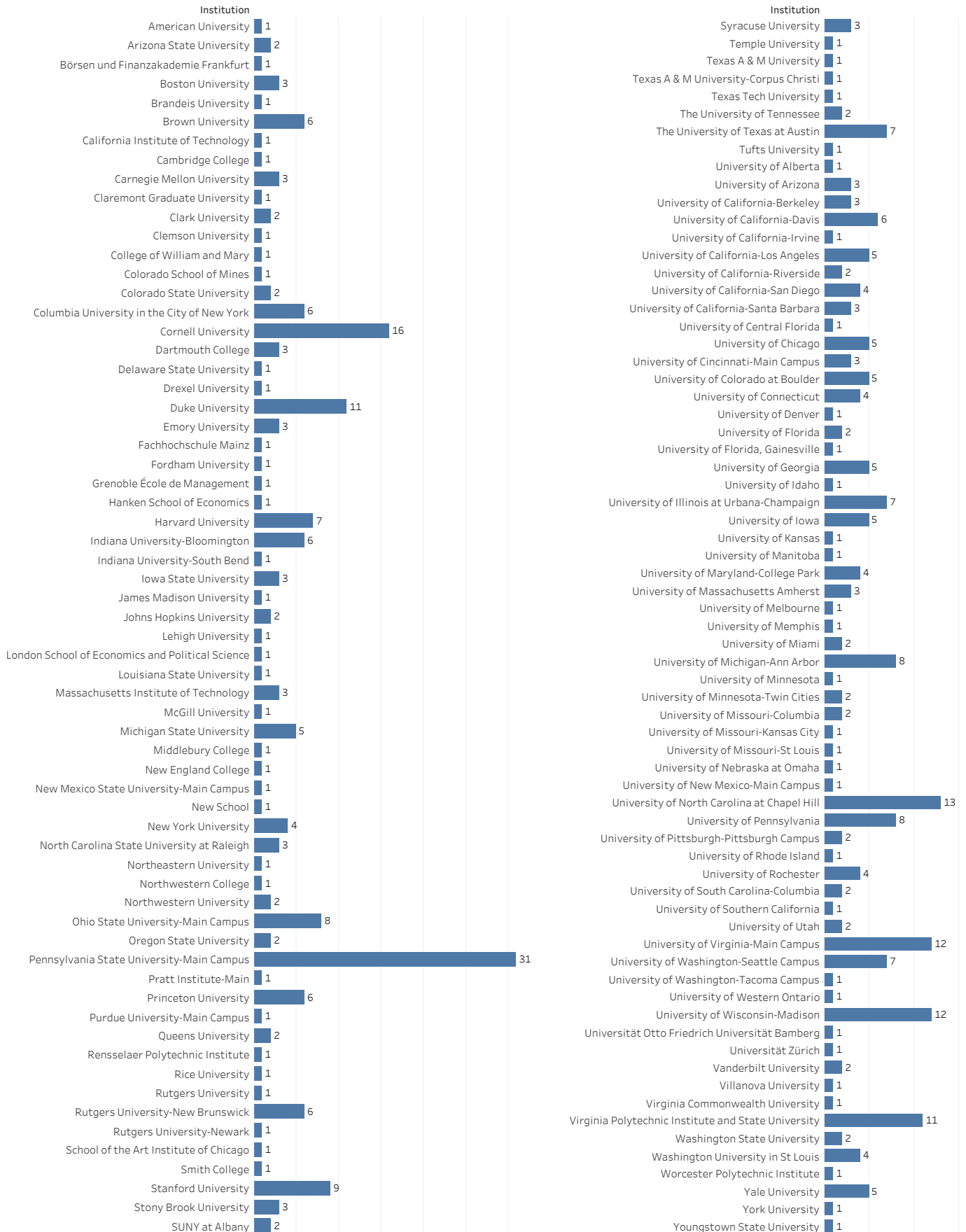
Newly Hired Faculty Head Counts by College, Race/Ethnicity, and Gender from 2015 to 2018

			Year				
College	Race/Ethnicity	Gender	2015	2016	2017	2018	Grand Total
College of Arts & Sciences	Faculty of Color	F	5	5	7	3	20
		M	7	5	3	1	16
	Non-Resident Alien	F	3	2	3	1	9
		M	2	4	2	4	12
	White	F	9	10	8	12	39
		M	4	10	8	7	29
	Unknown	F	1	1		3	5
		M				3	3
College of Engineering	Faculty of Color	F	1				1
		M	2		1	1	4
	Non-Resident Alien	F			2		2
		M	3			3	6
	White	F	2	2		2	6
		M	1	3	4	2	10
	Unknown	F				1	1
		M				2	2
Freeman College of Management	Faculty of Color	F	1	1		1	3
		M		1			1
	Non-Resident Alien	F			1		1
		M					
	White	F				1	1
		M		1	2	1	4
	Unknown	F				2	2
		M					
Grand Total			41	45	41	50	177

Newly Hired Faculty Head Counts by College, Rank, Tenure Status, and Gender from 2015 to 2018

College	Current Rank	Tenure Desc	Gender	2015	2016	Year 2017	2018	Grand Total
College of Arts & Sciences	Assistant Professor	Non-Tenured	F	9	9	11	9	38
			M	4	10	7	8	29
		On Track	F	5	8	5	9	27
			M	5	6	6	7	24
	Associate Professor	On Track	F	1				1
			M	2	1			3
		Tenured	M		1			1
	Professor	On Track	F	1				1
	Instructor	Non-Tenured	F		1		1	2
	Other	Non-Tenured	F	2		2		4
			M	2	1			3
College of Engineering	Assistant Professor	Non-Tenured	F	2	2	2	2	8
			M	1	2	3	5	11
		On Track	F	1			1	2
			M	4	1	2	3	10
	Professor	Non-Tenured	M	1				1
Freeman College of Management	Assistant Professor	Non-Tenured	F	1			3	4
			M		2	2		4
		On Track	F			1	1	2
	Associate Professor	Non-Tenured	F		1			1
	Professor	On Track	M				1	1
Grand Total				41	45	41	50	177

Full-Time Faculty Highest Degrees Earned Conferring Institutions Fall 2018



Full-Time Faculty Salaries
Average Annualized Salary 2009-10 through 2018-19
(Excluding Replacement Faculty)

Year	Rank	# Men	# Women	Total	Men Salary	Women Salary	Average Salary
2009-10	Professor	57	17	74	\$115,166	\$104,389	\$112,690
	Associate Professor	85	57	142	\$82,201	\$81,486	\$81,914
	Assistant Professor	69	60	129	\$73,042	\$70,631	\$71,921
2010-11	Professor	60	24	84	\$114,422	\$102,085	\$110,897
	Associate Professor	86	54	140	\$83,217	\$82,021	\$82,756
	Assistant Professor	66	62	128	\$74,608	\$73,453	\$74,048
	Instructor	1	0	1			
	Other	0	1	1			
2011-12	Professor	56	28	84	\$114,990	\$100,945	\$110,308
	Associate Professor	89	57	146	\$85,175	\$82,527	\$84,141
	Assistant Professor	67	61	128	\$73,227	\$72,851	\$73,048
2012-13	Professor	65	30	95	\$114,634	\$102,631	\$110,843
	Associate Professor	86	60	146	\$87,328	\$83,818	\$85,885
	Assistant Professor	64	55	119	\$75,753	\$74,666	\$75,251
	Instructor	0	1	1			
2013-14	Professor	72	30	102	\$117,811	\$108,371	\$115,034
	Associate Professor	87	62	149	\$93,342	\$89,180	\$91,610
	Assistant Professor	64	55	119	\$78,951	\$76,248	\$77,702
2014-15	Professor	71	32	103	\$120,633	\$110,821	\$117,584
	Associate Professor	92	67	159	\$94,657	\$90,117	\$92,744
	Assistant Professor	57	53	110	\$80,160	\$77,425	\$78,842
2015-16	Professor	72	33	105	\$123,689	\$116,208	\$121,338
	Associate Professor	90	69	159	\$98,602	\$94,521	\$96,831
	Assistant Professor	58	48	106	\$81,412	\$79,037	\$80,336
	Instructor & Other	2	3	5	\$62,430	\$52,680	\$56,580
2016-17	Professor	79	35	114	\$126,333	\$118,451	\$123,913
	Associate Professor	87	68	155	\$99,966	\$97,323	\$98,807
	Assistant Professor	56	49	105	\$80,053	\$77,524	\$78,873
	Instructor & Other	2	2	4	\$64,069	\$56,534	\$60,301
2017-18	Professor	83	37	120	\$126,285	\$120,052	\$124,364
	Associate Professor	85	60	145	\$102,365	\$100,795	\$101,715
	Assistant Professor	58	58	116	\$80,124	\$81,053	\$80,588
	Instructor & Other	1	2	3		\$57,715	\$60,393
2018-19	Professor	86	40	126	\$128,545	\$122,107	\$126,501
	Associate Professor	73	56	129	\$106,103	\$102,459	\$104,521
	Assistant Professor	63	64	127	\$83,032	\$84,369	\$83,706
	Instructor & Other	1	1	2			\$67,394

Staff Head Counts by Gender
FT Full-Time, PT Part-Time

	2014			2015			2016			2017			2018			Grand Total
	FT	PT	Total	FT	PT	Total	FT	PT	Total	FT	PT	Total	FT	PT	Total	
Female	467	15	482	475	17	492	490	18	508	507	17	524	495	21	516	2,522
Male	406	3	409	396	2	398	412	2	414	417	4	421	420	7	427	2,069
Grand Total	873	18	891	871	19	890	902	20	922	924	21	945	915	28	943	4,591

Staff Head Counts by Race/Ethnicity

	2014			2015			2016			2017			2018			Grand Total
	FT	PT	Total	FT	PT	Total	FT	PT	Total	FT	PT	Total	FT	PT	Total	
American Indian or Alaska Native	4		4	3		3	3		3	2		2	2		2	14
Asian	13		13	12		12	12	1	13	10	1	11	10		10	59
Black or African American	20	2	22	25	2	27	25		25	24	1	25	27	1	28	127
Hispanic or Latino	8		8	9	1	10	14		14	19		19	20	1	21	72
Multiple Races	6	1	7	7	1	8	10		10	11		11	11		11	47
Non-Resident Alien	5		5	5		5	2		2	2		2	3		3	17
Unknown	3		3	9		9	11		11	24		24	40	2	42	89
White	814	15	829	801	15	816	825	19	844	832	19	851	802	24	826	4,166
Grand Total	873	18	891	871	19	890	902	20	922	924	21	945	915	28	943	4,591

Staff Head Counts by Position Type

	2014			2015			2016			2017			2018			Grand Total
	FT	PT	Total	FT	PT	Total	FT	PT	Total	FT	PT	Total	FT	PT	Total	
Exempt	478	5	483	479	4	483	490	4	494	508	6	514	507	6	513	2,487
Non-exempt	395	13	408	392	15	407	412	16	428	416	15	431	408	22	430	2,104
Grand Total	873	18	891	871	19	890	902	20	922	924	21	945	915	28	943	4,591

Staff Head Counts by Gender, Race/Ethnicity, and Position Type

			2014			2015			2016			2017			2018			Grand Total
			FT	PT	Total	FT	PT	Total	FT	PT	Total	FT	PT	Total	FT	PT	Total	
Female	American Indian or Alaska Native	Exempt	1		1	1		1	1		1	1		1	1		1	5
	Asian	Exempt	6		6	6		6	6	1	7	4	1	5	3		3	27
		Non-exempt	1		1	2		2	2		2	2		2	2		2	9
	Black or African American	Exempt	6	2	8	8	1	9	8		8	9		9	11		11	45
		Non-exempt	1		1	2		2	2		2	2		2	1		1	8
	Hispanic or Latino	Exempt	1		1	1	1	2	4		4	9		9	9	1	10	26
		Non-exempt	2		2	3		3	3		3	3		3	3		3	14
	Multiple Races	Exempt	2		2	2		2	2		2	3		3	4		4	13
		Non-exempt	3		3	3	1	4	6		6	4		4	4		4	21
	Non-Resident Alien	Exempt	2		2	3		3	2		2	2		2	2		2	11
	Unknown	Exempt				2		2	4		4	9		9	13		13	28
		Non-exempt	3		3	2		2	3		3	5		5	6	2	8	21
	White	Exempt	223	1	224	225	2	227	230	2	232	229	3	232	220	3	223	1,138
		Non-exempt	216	12	228	215	12	227	217	15	232	225	13	238	216	15	231	1,156
Male	American Indian or Alaska Native	Exempt	3		3	2		2	2		2	1		1	1		1	9
	Asian	Exempt	6		6	4		4	4		4	4		4	5		5	23
	Black or African American	Exempt	12		12	15		15	14		14	12	1	13	14	1	15	69
		Non-exempt	1		1		1	1	1		1	1		1	1		1	5
	Hispanic or Latino	Exempt	3		3	4		4	6		6	6		6	6		6	25
		Non-exempt	2		2	1		1	1		1	1		1	2		2	7
	Multiple Races	Exempt	1	1	2	1		1	1		1	2		2	1		1	7
		Non-exempt				1		1	1		1	2		2	2		2	6
	Non-Resident Alien	Exempt	3		3	2		2						1		1	6	
	Unknown	Exempt				1		1	1		1	6		6	12		12	20
		Non-exempt				4		4	3		3	4		4	9		9	20
	White	Exempt	209	1	210	202		202	205	1	206	211	1	212	204	1	205	1,035
		Non-exempt	166	1	167	159	1	160	173	1	174	167	2	169	162	5	167	837
Grand Total			873	18	891	871	19	890	902	20	922	924	21	945	915	28	943	4,591

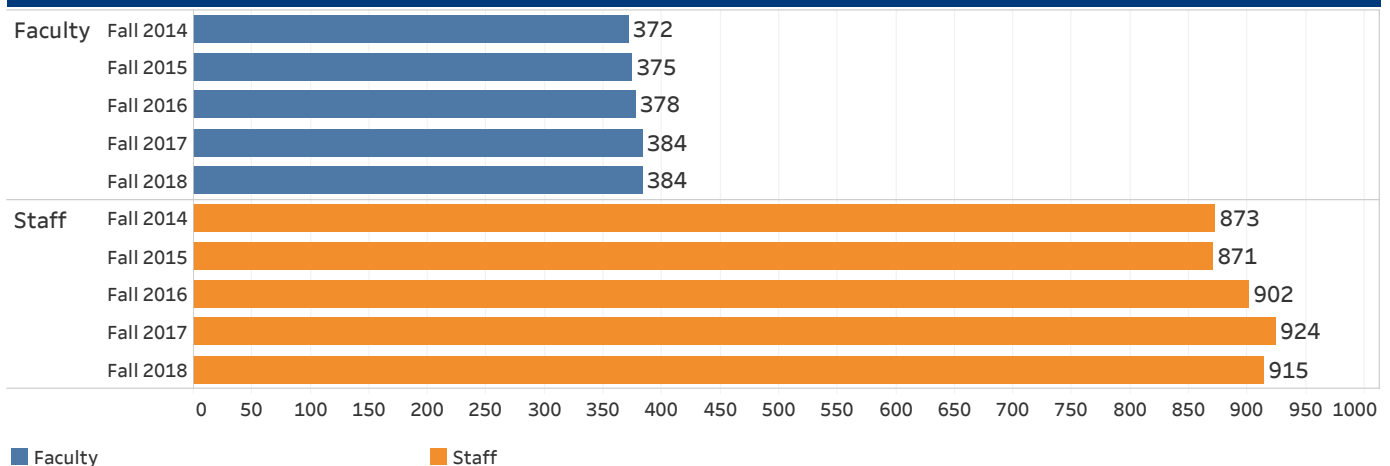
Number of Staff by Employment Status and Occupational Category (Fall 2018)

Occupational category	# Full-Time Staff	# Part-Time Staff	# FTE staff
Postsecondary Teachers	412	16	417
Instructional Staff	412	16	417
Instruction (Non Tenured Faculty)	28	16	33
Exclusively credit (Non Tenured Faculty)	28	16	33
Exclusively not-for-credit	0	0	0
Combined credit/not-for-credit	0	0	0
Instruction/research/public service (Tenure track faculty)	384	0	384
Research	0	0	0
Public Service	0	0	0
Librarians	8	12	12
Library and Instructional Support Occupations	51	0	51
Archivists, Curators, and Museum Technicians	0	0	0
Librarians, Curators, and Archivists	13	0	13
Library Technicians	5	0	5
Other Teachers and Instructional Support Staff	38	0	38
Management Occupations	82	0	82
Business and Financial Operations Occupations	140	1	140
Computer, Engineering, and Science Occupations	97	0	97
Community Service, Legal, Arts, and Media Occupations	120	7	122
Healthcare Practitioners and Technical Occupations	9	1	9
Service Occupations	181	5	183
Sales and Related Occupations	0	0	0
Office and Administrative Support Occupations	155	14	160
Natural Resources, Construction, and Maintenance Occupations	58	0	58
Production, Transportation, and Material Moving Occupations	22	0	22
Total number of staff	1,327	44	1,342

Staff Head Counts by Primary Function and Employment Status Adjunct faculty are counted as part-time faculty

		Faculty	Staff	Grand Total
Fall 2014	Full Time	372	873	1,245
	Part Time	10	18	28
	Replacement	31	0	31
Fall 2015	Full Time	375	871	1,246
	Part Time	11	19	30
	Replacement	25	0	25
Fall 2016	Full Time	378	902	1,280
	Part Time	16	20	36
	Replacement	32	0	32
Fall 2017	Full Time	384	924	1,308
	Part Time	14	21	35
	Replacement	28	0	28
Fall 2018	Full Time	384	915	1,299
	Part Time	16	28	44
	Replacement	28	0	28

Number of Full-Time Faculty and Staff in Five Years



FINANCE

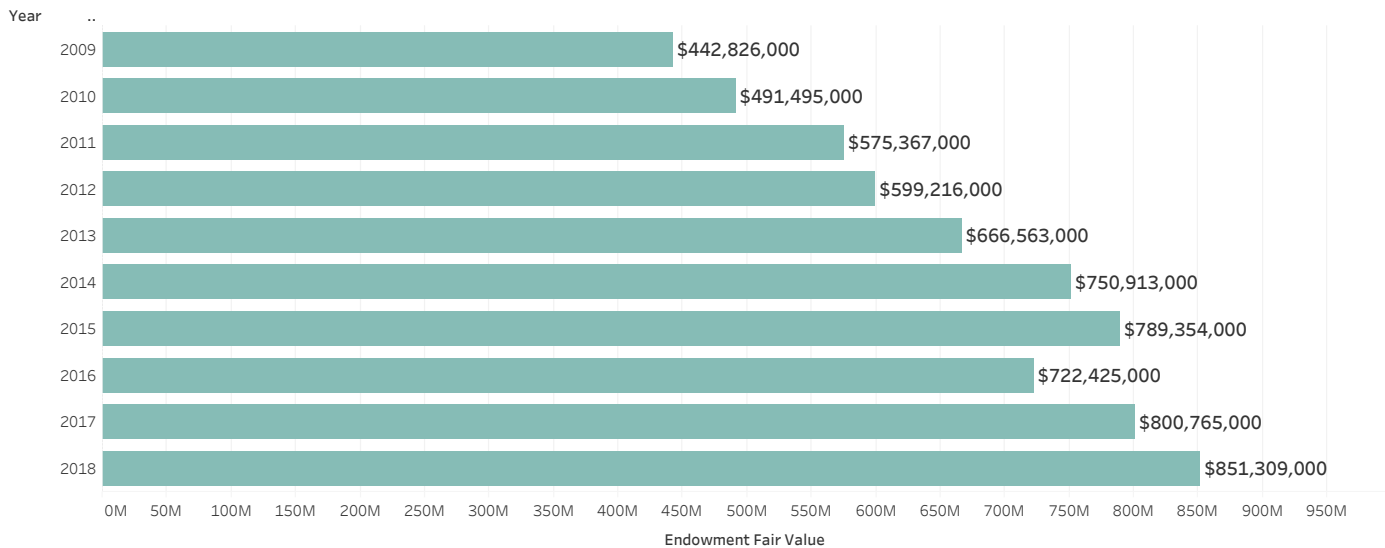
Tuition and Fees History								
Undergraduate	2011-12	2012-13	2013-14	2014-15	2015-16	2016-17	2017-18	2018-19
Tuition	\$43,628	\$45,132	\$46,646	\$48,234	\$49,878	\$51,676	\$53,692	\$55,788
Fees	\$238	\$246	\$256	\$264	\$274	\$284	\$294	\$304
Total Tuition & Fees	\$43,866	\$45,378	\$46,902	\$48,498	\$50,152	\$51,960	\$53,986	\$56,092
Board	\$4,326	\$4,482	\$4,636	\$4,794	\$4,766	\$4,938	\$5,130	\$5,330
Room Rate (Double)	\$6,048	\$6,330	\$6,622	\$6,848	\$7,450	\$7,718	\$8,020	\$8,332
Total Room&Board	\$10,374	\$10,812	\$11,258	\$11,642	\$12,216	\$12,656	\$13,150	\$13,662
Tuition, Fees, Room & Board (Comprehensive Fee)	\$54,240	\$56,190	\$58,160	\$60,140	\$62,368	\$64,616	\$67,136	\$69,754
Books and Supplies	\$900	\$900	\$900	\$900	\$900	\$900	\$900	\$900
Single course Rate	\$4,790	\$4,955	\$5,121	\$5,295	\$5,475	\$5,672	\$5,893	\$6,123
Full-time Graduate Tuition, Annual	\$19,160	\$19,820	\$20,484	\$21,180	\$21,900	\$22,688	\$23,568	\$24,496
Endowment Fair Value Peer Comparisons 2017-18								
Derived from Audited Financial Statements Fiscal year ends May 31								
Rank	Institution	June 30, 2016	June 30, 2017	% Change (2016-17)		June 30, 2018		
1	Dartmouth	\$4,474,404,000	\$4,956,494,000	10.8%		\$5,494,204,000		
2	Richmond	\$2,164,442,000	\$2,395,074,000	10.7%		\$2,506,098,000		
3	Wake Forest	\$1,141,212,000	\$1,205,323,000	5.6%		\$1,329,255,000		
4	Lehigh	\$1,108,192,000	\$1,227,986,000	10.8%		\$1,301,639,000		
5	Middlebury	\$1,000,598,000	\$1,073,976,000	7.3%		\$1,124,144,000		
6	William & Mary	\$803,700,000	\$898,700,000	11.8%		\$962,200,000		
7	Colgate	\$824,316,000	\$883,351,000	7.2%		\$934,594,000		
8	Lafayette	\$774,729,000	\$833,069,000	7.5%		\$870,742,000		
9	Bucknell	\$722,425,000	\$800,765,000	10.8%		\$851,309,000		
10	Davidson	\$648,656,959	\$716,203,023	10.4%		\$805,949,257		
11	Holy Cross	\$680,993,000	\$748,948,000	10.0%		\$783,207,000		
12	Villanova	\$552,701,000	\$640,428,000	15.9%		\$710,592,000		
13	Trinity	\$532,344,485	\$584,499,394	9.8%		\$621,190,886		
Average	Institutions	\$1,145,603,142	\$1,258,990,189	9.9%		\$1,407,317,242		
NA	Furman	\$609,730,540	\$661,046,233	8.4%				

Endowment Fair Value and Spending per Student

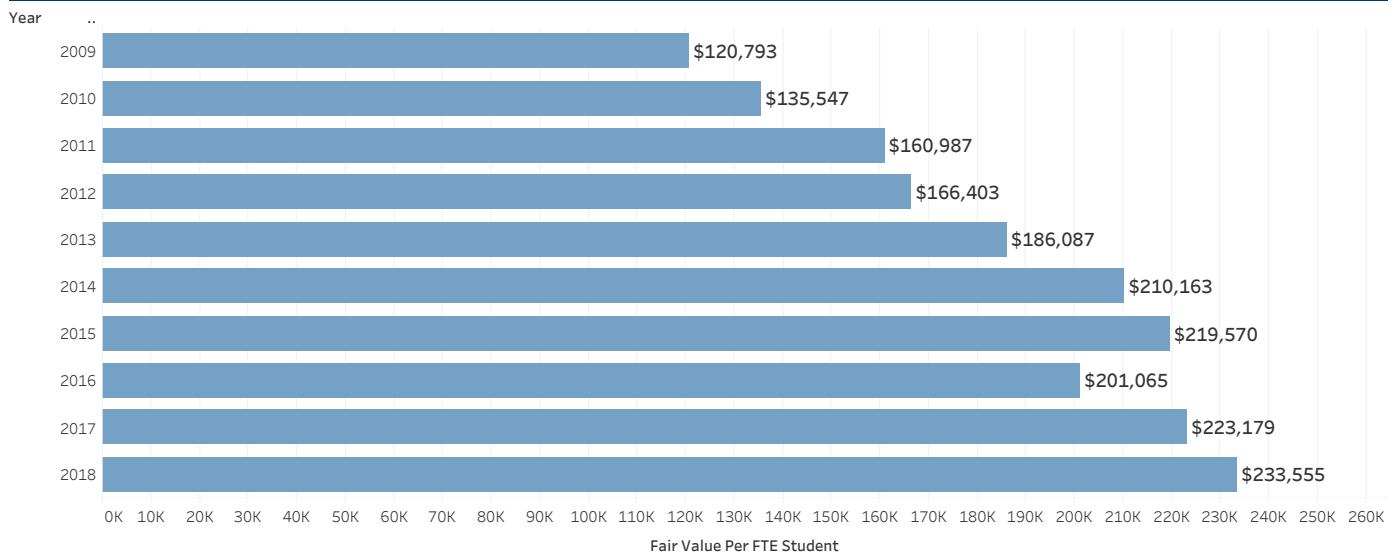
Amounts derived from Audited Financial Statements then divided by student FTE

Year (as of June 30)	Endowment Fair Value	Fair Value Per FTE Student	Spending for Year	Spending from Endowment per FTE Student
2009	\$442,826,000	\$120,793	\$27,918,000	\$7,615
2010	\$491,495,000	\$135,547	\$27,682,000	\$7,634
2011	\$575,367,000	\$160,987	\$28,646,000	\$8,015
2012	\$599,216,000	\$166,403	\$28,646,000	\$7,955
2013	\$666,563,000	\$186,087	\$31,932,000	\$8,915
2014	\$750,913,000	\$210,163	\$34,935,000	\$9,777
2015	\$789,354,000	\$219,570	\$36,857,000	\$10,252
2016	\$722,425,000	\$201,065	\$41,527,000	\$11,558
2017	\$800,765,000	\$223,179	\$42,161,000	\$11,751
2018	\$851,309,000	\$233,555	\$42,987,000	\$11,793

Endowment Fair Value from 2009 to 2018



Endowment Fair Value per FTE Student from 2009 to 2018



Operating Revenues (in Thousands)

From Audited Financial Statements

Year (as of June 30)	Gross Student Tuition and Fees	Net Students Tuition and Fees	Auxiliary Services	Private Gifts and Grants	Government Grants and Contracts	Investment Income	Other Income	Total Operating Revenues
2009	\$139,538	\$97,969	\$32,054	\$10,184	\$4,249	\$29,364	\$4,394	\$178,214
2010	\$142,965	\$99,510	\$29,046	\$9,589	\$5,026	\$29,562	\$4,755	\$177,488
2011	\$147,845	\$103,120	\$29,991	\$11,034	\$4,795	\$29,974	\$5,586	\$184,500
2012	\$154,846	\$107,738	\$30,848	\$12,350	\$3,190	\$29,480	\$5,615	\$189,221
2013	\$159,434	\$111,499	\$31,518	\$12,104	\$3,122	\$32,431	\$5,989	\$196,663
2014	\$165,547	\$115,421	\$32,905	\$12,351	\$3,887	\$35,551	\$6,274	\$206,389
2015	\$170,879	\$119,467	\$33,378	\$13,012	\$3,989	\$37,404	\$6,006	\$213,256
2016	\$176,613	\$121,848	\$36,414	\$12,220	\$4,031	\$42,279	\$5,689	\$222,481
2017	\$182,776	\$126,598	\$37,299	\$11,168	\$3,714	\$43,397	\$7,965	\$230,141
2018	\$191,917	\$132,465	\$39,045	\$12,486	\$4,234	\$44,355	\$7,963	\$240,548

Operating Expenses (in Thousands)

From Audited Financial Statements

Year (as of June 30)	Instruction	Research and Public Service	Academic Support	Student Services	Institutional Support	Auxiliary Services	Total Operating Expenses
2009	\$61,089	\$2,924	\$21,134	\$30,084	\$27,778	\$30,601	\$173,610
2010	\$63,057	\$3,377	\$21,556	\$30,556	\$27,458	\$26,659	\$172,663
2011	\$63,981	\$3,454	\$21,824	\$30,891	\$26,882	\$25,820	\$172,852
2012	\$66,250	\$2,616	\$23,660	\$33,289	\$26,994	\$26,447	\$179,256
2013	\$70,194	\$2,620	\$26,793	\$35,654	\$33,320	\$26,510	\$195,091
2014	\$73,338	\$3,403	\$26,871	\$36,242	\$33,854	\$27,072	\$200,780
2015	\$75,899	\$3,188	\$27,788	\$37,984	\$33,960	\$26,818	\$205,637
2016	\$80,435	\$3,164	\$29,759	\$38,494	\$36,452	\$30,933	\$219,237
2017	\$85,707	\$2,880	\$29,465	\$42,776	\$38,156	\$32,849	\$231,833
2018	\$87,189	\$3,195	\$31,437	\$45,420	\$38,972	\$35,040	\$241,253

Net Assets (in Thousands)

From Audited Financial Statements

Year (as of June 30)	Unrestricted	Temporarily Restricted	Permanently Restricted	Total Net Assets
2009	\$301,161	\$179,280	\$182,192	\$662,633
2010	\$323,221	\$202,398	\$192,557	\$718,176
2011	\$369,140	\$260,761	\$207,993	\$837,894
2012	\$357,717	\$233,869	\$217,372	\$808,958
2013	\$393,108	\$258,305	\$231,886	\$883,299
2014	\$430,600	\$293,095	\$252,564	\$976,259
2015	\$423,523	\$284,427	\$261,448	\$969,398
2016	\$388,183	\$243,377	\$287,271	\$918,831
2017	\$427,004	\$290,151	\$319,795	\$1,036,950
2018	\$460,239	\$297,622	\$352,523	\$1,110,384

Institutional Grants and Scholarships for Undergraduate Students*

(in thousands except the percentages and average student indebtedness at graduation)

*Reported to the Common Data Set and U.S. News as estimates.

** Actual discount rate.

Year	Freshman Tuition Discount Rate**	Merit Athletic Awards	Average Need-based Award	Average Merit-based Award	Average Merit Athletic Award	Average % of Financial Need Met	Average Student Indebtedness at Graduation
2009-10	30.4%	\$449	\$26	\$12	\$9	95%	\$18,800
2010-11	30.3%	\$563	\$26	\$12	\$9	95%	\$18,900
2011-12	30.4%	\$691	\$26	\$13	\$9	95%	\$20,149
2012-13	29.1%	\$773	\$27	\$14	\$10	95%	\$21,163
2013-14	31.7%	\$1,979	\$29	\$14	\$29	95%	\$22,500
2014-15	30.0%	\$3,232	\$30	\$14	\$33	91%	\$22,500
2015-16	32.0%	\$5,080	\$32	\$12	\$36	91%	\$22,500
2016-17	26.5%	\$7,680	\$33	\$12	\$37	91%	\$22,600
2017-18	31.0%	\$8,241	\$33	\$12	\$38	91%	\$22,600
2018-19	29.1%	\$8,989	\$34	\$14	\$40	92%	\$21,245

Financial Assistance

From Financial Statements.

* Discount rate includes undergraduate and graduate student revenue and scholarship awards.

Year	Pell Grants	Other Federal Grants	State Grants	Institutional Grants (Funded)	Institutional Grants (Unfunded)	Total Student Grants	Allowances-Scholarships Applied to Tuition and Fees	Tuition and Fees	Total Discount Rate*
2014	\$1,688,000	\$236,000	\$883,000	\$13,265,000	\$36,625,000	\$52,697,000	\$50,126,000	\$165,547,000	30.28%
2015	\$1,655,000	\$256,000	\$806,000	\$14,796,000	\$36,360,000	\$53,873,000	\$51,412,000	\$170,879,000	30.09%
2016	\$1,725,000	\$264,000	\$842,000	\$14,455,000	\$40,046,000	\$57,332,000	\$54,765,000	\$176,613,000	31.01%
2017	\$1,547,000	\$236,000	\$744,000	\$13,883,000	\$42,059,000	\$58,469,000	\$56,178,000	\$182,776,000	30.74%
2018	\$1,760,000	\$319,000	\$701,000	\$15,431,000	\$43,702,000	\$61,913,000	\$59,452,000	\$191,917,000	30.98%

Outright Giving for Current Operations as reported in the VSE (in Thousands)

(VSE: Voluntary Support for Education survey)

Year (as of June 30)	Alumni	Parents	Foundations Gifts	Corporate Gifts	Other Organizations	Other Individuals	Total
2012	\$6,226	\$1,565	\$2,901	\$1,218	\$66	\$1,247	\$13,223
2013	\$5,977	\$1,556	\$2,600	\$1,338	\$83	\$306	\$11,861
2014	\$6,924	\$1,627	\$2,032	\$1,386	\$38	\$403	\$12,410
2015	\$6,672	\$1,717	\$2,694	\$1,506	\$72	\$398	\$13,058
2016	\$5,627	\$1,685	\$2,931	\$1,632	\$131	\$417	\$12,423
2017	\$6,426	\$1,529	\$1,817	\$1,499	\$125	\$307	\$11,703
2018	\$7,930	\$1,467	\$1,631	\$1,307	\$138	\$431	\$12,904

All Outright Giving and Deferred Giving (Present Value) as reported in the VSE (in Thousands)

(VSE: Voluntary Support for Education survey)

Year (as of June 30)	Alumni	Parents	Foundations Gifts	Corporate Gifts	Other Organizations	Other Individuals	Total
2012	\$14,697	\$7,703	\$5,487	\$3,221	\$117	\$2,722	\$33,945
2013	\$14,258	\$3,173	\$5,628	\$3,654	\$133	\$1,045	\$27,891
2014	\$18,917	\$2,454	\$6,397	\$3,213	\$38	\$610	\$31,630
2015	\$15,850	\$2,766	\$6,667	\$2,824	\$74	\$829	\$29,010
2016	\$14,915	\$2,898	\$6,350	\$2,707	\$132	\$558	\$27,559
2017	\$34,564	\$3,015	\$5,930	\$2,258	\$127	\$906	\$46,800
2018	\$20,163	\$1,960	\$8,124	\$7,184	\$139	\$662	\$38,232

DEFINITIONS

DEFINITIONS BUCKNELL UNIVERSITY

TERM	DEFINITION	DEFINITION SOURCE
Admissions		
First-year student	A student who has completed less than the equivalent of 1 full year of undergraduate work; that is, less than 30 semester hours (in a 120-hour degree program) or less than 900 contact hours .	IPEDS
SAT/ACT test score calculation	SAT/ACT calculation is for ALL enrolled, degree/certificate-seeking, first-time (freshman) students who submitted test scores. If students submitted both SAT and ACT scores, but only SAT scores were considered for admission, only report the SAT scores (and vice versa).	IPEDS
Revised SAT in 2017	The SAT scores for Fall 2017 represent scores from the redesigned SAT (rSAT) test. Fall semester entering students had the option to submit the historical SAT (hSAT) scores. Using the instructions provide by the Integrated Postsecondary Education Data System (IPEDS), those hSAT scores submitted were converted to the rSAT score using the College Board concordance tools and tables. The 2017 results may or may not be indicative of future year entering class SAT metrics for Bucknell's modal applicants, given the lack of data available regarding the rSAT and the combination of the hSAT and rSAT scores in this entering class.	IR Office
Transfer Student	A student entering the institution for the first time but known to have previously attended a postsecondary institution at the same level (e.g., undergraduate). The student may transfer with or without credit.	Common Data Set
Enrollment		
American Indian	A person having origins in any of the original peoples of North and South America (including Central America) who maintains cultural identification through tribal affiliation or community attachment.	IPEDS
Asian	A person having origins in any of the original peoples of the Far East, Southeast Asia, or the Indian Subcontinent, including, for example, Cambodia, China, India, Japan, Korea, Malaysia, Pakistan, the Philippine Islands, Thailand, and Vietnam.	IPEDS
Black	A person having origins in any of the black racial groups of Africa.	IPEDS
Degree Seeking	Students enrolled in courses for credit and recognized by the institution as seeking a degree, certificate, or other formal award. High school students also enrolled in postsecondary courses for credit are not considered degree/certificate-seeking.	IPEDS
First-Generation	A student for whom neither parent completed a 4 year bachelor's degree or higher.	IR Office
Full Time Students	Courseloads and full-time status: The normal courseload is four course credits. All degree candidates, including seniors, are expected to be enrolled each semester as full-time students, carrying a minimum of 3.0 and a maximum of 4.75 course credits, regardless of the number of course credits previously earned or planned for the future.	IPEDS
Full-Time Equivalent (FTE) of Students	The full-time equivalent (FTE) of students is a single value providing a meaningful combination of full time and part time students. IPEDS data products currently have two calculations of FTE students, one using fall student headcounts and the other using 12-month instructional activity. Bucknell University is using the fall headcount calculation.	IPEDS

TERM	DEFINITION	DEFINITION SOURCE
Hispanic	A person of Cuban, Mexican, Puerto Rican, South or Central American, or other Spanish culture or origin, regardless of race.	IPEDS
Home of Origin	Student's home of origin is Pennsylvania if he/she is U.S citizen and his/her Home State is PA ; Student's home of origin is other U.S. State if he/she is U.S. citizen and his/her Home State is other states; Student's home of origin is other country if he/she is not a U.S. citizen.	IR Office
Multi-race	A person with more than one race.	IPEDS
Native Hawaiian/ Pacific Islander	A person having origins in any of the original peoples of Hawaii, Guam, Samoa, or other Pacific Islands.	IPEDS
Nonresident Alien	A person who is not a citizen or national of the United States and who is in this country on a visa or temporary basis and does not have the right to remain indefinitely.	IPEDS
Pell Grant	A Pell Grant is money the U.S. federal government provides for students who need it to pay for college. For details, see http://www2.ed.gov/programs/fpg/index.html	U.S. Department of Education
Percent of Non-Residents	Percentage of the non-resident students out of the total students.	IR Office
Race Unknown	The category used to report students or employees whose race and ethnicity are not known.	IPEDS
Residential Colleges	The Residential Colleges are themed living-learning communities tied to a first-semester class, in which students live and learn with their peers who share similar interests, and participate in off-campus trips and weekly Common Hour discussions led by faculty mentors. Bucknell residential colleges include Arts College, Discovery College, Environmental College, Food College, Global College, Humanities College, Languages & Cultures College, Social Justice College, and Society & Technology College.	Bucknell Academics
Students of Color	This category includes Asian, Hispanic, Black, American Indian, Native Hawaiian/ Pacific Islander, and multi-race students. The percentage of students in this category is calculated by dividing the number of Students of Color by the total number of students.	IR Office
White	A person having origins in any of the original peoples of Europe, the Middle East, or North Africa.	IPEDS
Student Success		
Graduation Rate	The number of students entering the institution as full-time, first-time, degree/certificate-seeking undergraduate students in a particular year (cohort), as a percent of the number completing their program within 150 percent (6-year) of normal time to completion.	IPEDS
POSSE	The Posse Foundation identifies, recruits, and trains high school students with extraordinary academic and leadership potential to become Posse Scholars. For over ten years, Posse has been on Bucknell's campus; we currently sponsor scholars from Los Angeles, Boston, and Washington D.C.	BU Website
Retention Rate	A measure of the rate at which students persist in their educational program at an institution, expressed as a percentage. For four-year institutions , this is the percentage of first-time bachelors (or equivalent) degree-seeking undergraduates from the previous fall who are again enrolled in the current fall. For all other institutions this is the percentage of first-time degree/certificate-seeking students from the previous fall who either re-enrolled or successfully completed their program by the current fall.	IPEDS

TERM	DEFINITION	DEFINITION SOURCE
Faculty & Staff		
Faculty	Persons identified by the institution as such and typically those whose initial assignments are made for the purpose of conducting instruction, research or public service as a principal activity (or activities). They may hold academic rank titles of professor, associate professor, assistant professor, instructor, lecturer or the equivalent of any of those academic ranks. Faculty may also include the chancellor/president, provost, vice provosts, deans, directors or the equivalent, as well as associate deans, assistant deans and executive officers of academic departments (chairpersons, heads or the equivalent) if their principal activity is instruction combined with research and/or public service. The designation as “faculty” is separate from the activities to which they may be currently assigned. For example, a newly appointed president of an institution may also be appointed as a faculty member. Graduate, instruction, and research assistants are not included in this category.	IPEDS
FTE Staff	Full-time-equivalent (FTE) staff is calculated by summing the total number of full-time staff and adding one-third of the total number of part-time staff. Graduate assistants are not included.	IPEDS
Full-Time staff	As defined by the institution. The type of appointment at the snapshot date determines whether an employee is full time or part time. The employee’s term of contract is not considered in making the determination of full or part time.	IPEDS
Other Faculty	Faculty who are not tenured or on tenure-track position but sign a long-term contract. They are counted as full-time for IPEDS reporting.	IR Office
Replacement Faculty	Replacement faculty replace faculty on sabbatical leave or leave with pay.	IR Office
Terminal Degree	The highest earned degree in a discipline. In most cases, this is the doctorate (Ed.D., Ph.D., Doctor of Musical Arts, and Doctor of Jurisprudence). In the fine arts, the M.F.A. or Master’s of Fine Arts degree is considered the highest appropriate degree.	IR Office
Visiting Faculty	Faculty in a temporary position of one year or less without tenure consideration. Appointees to two- or three-year positions are not required to use the “visiting” designation although they may use it if they wish”. Visiting faculty employees are counted as full-time for IPEDS reporting.	IR Office
Finance		
All Outright Giving	All annual giving including deferred giving and giving for capital purposes.	VSE Survey
Endowment Funds	Funds whose principal is nonexpendable (true endowment) and that are intended to be invested to provide earnings for institutional use. Also includes term endowments and funds functioning as endowment.	IPEDS
Financial Aid	Federal Work Study, grants, loans to students (government and/or private), assistantships, scholarships, fellowships, tuition waivers, tuition discounts, employer aid (tuition reimbursement) and other monies (other than from relatives/friends) provided to students to meet expenses. This excludes loans to parents.	IPEDS
Outright Giving	Funds given for current operations.	VSE Survey

TERM	DEFINITION	DEFINITION SOURCE
Tuition	The amount of money charged to students for instructional services. Tuition may be charged per term, per course, or per credit.	IPEDS
Tuition Discount Rate	Total financial aid awarded (does not include student loans nor student specific grant awards as determined by a government agency or third party) divided by total gross tuition and fees	IR Office
VSE	Voluntary Support of Education	VSE Survey
Bucknell Academic Colleges and Schools		
College of Arts & Sciences	Provides 46 majors. Courses are offered in the three traditional liberal arts divisions: humanities, social sciences, and natural sciences and mathematics.	Bucknell Academics
College of Engineering	Accredited by the Accreditation Board for Engineering and Technology, Inc (ABET), the College of Engineering offers 8 Bachelor of Science Degrees: Biomedical Engineering, Chemical Engineering; Civil Engineering, Environmental Engineering; Computer Engineering; Computer Science and Engineering; Electrical Engineering; Mechanical Engineering.	Bucknell Academics
Freeman College of Management	Accredited by the Association to Advance Collegiate Schools of Business (AACSB), the Freeman College of Management offers 4 majors leading to the bachelor of business Administration Degree: Accounting and Financial Management; Global Management; Managing for Sustainability; Markets, Innovation and Design.	Bucknell Academics
Graduate Studies	The College of Arts and Sciences graduate program leads to three degrees of Master of Arts (MART), Master of Science (MSCI), and Master in Education. The College of Engineering Graduate Program leads to five degrees of Master of Science in Chemical Engineering, Civil Engineering, Electrical Engineering, Environmental Engineering, and Mechanical Engineering.	Bucknell Academics



Bucknell
UNIVERSITY
LEWISBURG, PA 17837