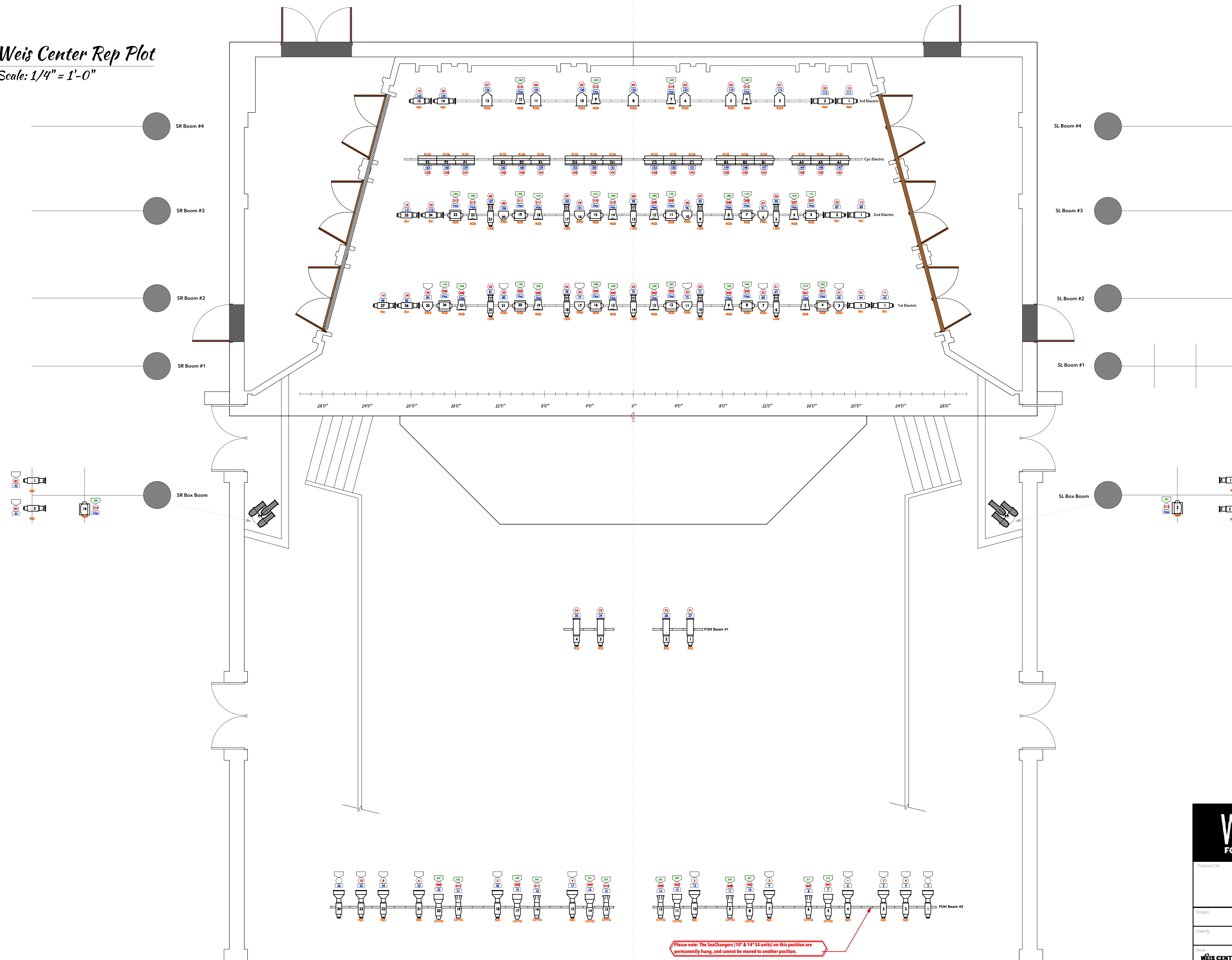


1 **Weis Center Rep Plot**  
Scale: 1/4" = 1'-0"



### Line Set Schedule

CYC PERMANENTLY HUNG	30'-4"
BLACK TRAVELER	29'-7"
3RD ELECTRIC	28'-4"
LINESET 12	27'-4"
CLOUDS US PERMANENTLY HUNG	25'-0"
CYC LIGHTS AND CONNECTOR ARM	23'-1"
LEGS / BORDER US	21'-3"
SCREEN PERMANENTLY HUNG	20'-3"
2ND ELECTRIC	17'-10"
CLOUDS DS PERMANENTLY HUNG	16'-3"
LEGS / BORDER DS	14'-3"
LINESET 4	11'-11"
LINESET 3	10'-8"
1ST ELECTRIC	9'-11"
GRAND DRAPE (if installed)	7'-6"

### Symbol Key

	Altman Shakespeare 10deg @ 575w GLC 19 lb	12 / 12
	Altman Shakespeare 12deg @ 575w GLC 17.9 lb	4 / 16
	Altman Shakespeare 30deg @ 575w GLC 17.9 lb	16 / 20
	Altman Shakespeare 40deg @ 575w FLK / HX600	10 / 30
	Altman Star Par MFL @ 575w HP600 19 lbs	10 / 40
	Strand 8" Fresnelite @ 500/750/1000/2000w 17 lbs	7 / 32
	ETC Source4 10deg 750W @ 750w HPL 15 lbs	6 / 6
	ETC Source4 14deg 750W @ 750w HPL 19.3 lbs	6 / 6
	ETC D60 Lustr SELL40 @ 161w LED 19 lbs	16 / 16
	Chauvet Rogue R3 Wash @ 704w LED 38.5 lb	14 / 14

# Weis Center | Bucknell

FOR THE PERFORMING ARTS UNIVERSITY

<b>REP PLOT</b>	
<b>WEIS CENTER FOR THE PERFORMING ARTS</b>	
<b>LEWISBURG, PA</b>	
Production Title	<b>REP PLOT</b>
Designer	<b>KALEN SOWUL</b>
Drawn by	<b>KALEN SOWUL</b>
Scale	1/4" = 1'
Client	<b>WEIS CENTER FOR THE PERFORMING ARTS</b>
Date	1
CSO File Name	<b>REP PLOT 02072019.VWX</b>
Director	OF
Page	1

Please note: The SeaChangers (10' & 14" x 54 units) on this position are permanently hung, and cannot be moved to another position.