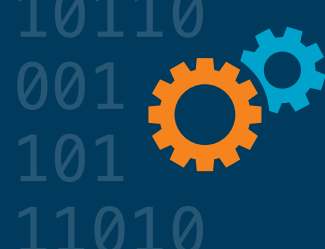


INSTITUTIONAL RESEARCH & ANALYTICS SERVICES



ACCREDITATION

Our office provides support for our [accreditation activities](#). Bucknell is currently accredited by MSCHE, ABET (Contact person: [Rita Liu](#)), AACSB (Contact person: [Jocelyn Zhao](#)), NCAA, NASM, ACS and the PA Department of Education. Our office supports the individual college or departmental accreditation needs.

Contact Person: [Kevork Horissian](#)

ANALYTICS

We provide support with various projects that may require simple and advanced analytics, data modeling, and automation. These include descriptive, predictive, and inferential statistics as well as machine learning. Examples of such projects include – retention and graduation studies, class placement, analysis of survey data, student success, faculty compensation studies, etc.

Contact Person: [Kevork Horissian](#) (all staff members contribute depending on the request and their availability: [Rita Liu](#), [Mike Latorre](#), [Doug LeBlanc](#), [Sohini Palit](#), [Wei You](#), [Jocelyn Zhao](#))

ASSESSMENT

At Bucknell University, the [outcomes assessment](#) serves two primary functions. The first is to provide evidence that our students are learning and developing in and out of the classroom, consistent with Bucknell's [mission](#) and [educational goals](#), and that our institutional policies, resources and services are appropriately supporting Bucknell's [strategic plan](#). The second function, equally critical, is to provide a mechanism for a continued improvement of all facets of Bucknell education.

Our [Assessment](#) page lists many resources, including guides and templates, helpful in conducting assessment activities. Bucknell's Outcomes page lists students' academic, extra-curricular, and post-graduation outcomes.

Contact person: [Wei You](#) ([Kevork Horissian](#))

UNIVERSITY DATA AND CENTRALIZED REPORTING

We can produce most data related to students, faculty and staff. Many of these data contain highly confidential and sensitive information. Therefore, Institutional Research will not release any unit-record data beyond that which is considered public and/or posted on the IR website except under very specific conditions.

OIRA is responsible for the timely submission of data to the federal government, accreditors (campus-wide and college-specific), college guides and rankings, and several consortia. The [Common Data Set](#) provides the bulk of the most frequently requested data for a given year. Reports and data are made available as appropriate to both internal and external constituents with key data available in both electronic and print formats. The office also maintains documentation on student retention, graduation rates, diversity, historical rankings, and important metrics of peer institutions.

Contact Person: [Jocelyn Zhao](#) ([Kevork Horissian](#) and [Rita Liu](#))

DASHBOARDS

The Bucknell University Interactive Dashboards is a visual interface that provides at-a-glance views into key measures and trends to assist administrators, faculty and staff in their planning efforts. For a complete list, please visit our [dashboard page](#) or refer to Appendix 2 – Dashboards.

Contact Person: (all staff members contribute depending on the request and their availability: [Rita Liu](#), [Mike Latorre](#), [Doug LeBlanc](#), [Sohini Palit](#), [Wei You](#), [Jocelyn Zhao](#))

EDUCATION

This functional area encompasses the training and coaching related to the use of data, analysis, and information to inform decision making in the context of institutional research. Education can be focused on ensuring the ability to collect, access, analyze, and interpret information independently and in collaboration with other stakeholders. The function also includes a collaborative role in convening discussions related to information needs and connecting internal and external producers and users of data with one another for purposes of informing decision making. Scholarship to inform and improve data, information, and analysis for decision support is also included in this function.

Contact Person: All staff members

FACT BOOK

The [Bucknell University Fact Book, published annually](#), is intended as a single, readily accessible, and accurate source of information about Bucknell University, including quantifiable data about students, faculty and staff, programs, and financial and physical resources. It presents a summary of facts about Bucknell that can be useful to administrators, faculty, staff, alumni and others who require information.

Contact Person: [Rita Liu](#)

OUTCOMES

Having access to data and measuring progress toward goals are essential to the success of any planning effort. To assist Bucknell's needs for transparency, accountability and planning, the OIRA has developed an [Outcomes page](#) and a set of dashboards that allow users to customize data reports based on individual needs.

Contact Person: [Kevork Horissian \(Wei You\)](#)

PEER INSTITUTIONS

Bucknell University has selected a number of institutions that are similar to us. Our office provides key data on the [peer institutions](#) included on the list.

Contact Person: [Kevork Horissian \(Jocelyn Zhao\)](#)

STRATEGIC PLANNING

We support the strategic planning process by providing various data that allow us to monitor our progress toward established goals.

Contact Person: [Kevork Horissian](#) (all staff members depending on the request)

SURVEY RESEARCH

The OIRA coordinates all major surveys on campus while also providing support and guidance with other [survey research](#) conducted by our faculty and staff, particularly if the goal of the survey is strategic planning, assessment, or institutional improvement. The results from all major surveys are published on our [Survey Reports](#) page and can be accessed by anyone with Bucknell login credentials.

Contact Person: [Rita Liu](#) and [Wei You](#) (all staff members contribute based on the request and their expertise and availability)

DEPARTMENTAL AND OPERATIONAL LEVEL REPORTING

We encourage functional areas to leverage reporting tools native to their source systems (Workday, Blackbaud, etc.). However, there are systems at Bucknell that lack adequate reporting capabilities. We provide data modeling, integration, and analytics tools support to various departments to allow them to better analyze and report on their data.

Contact Person: [Mike Latorre](#), [Doug LeBlanc](#), [Sohini Palit](#)

DATA ARCHITECTURE & ENGINEERING

Developing integrations from source systems into Bucknell's Enterprise Data Warehouse. Modeling and transforming data for ease of use in reporting and analytics by end users. Maintaining data warehouse database, Cognos and Tableau analytics tools, Wherescape data automation tool, and integration code. Ensure proper data security and access control of data housed in the data warehouse.

Contact Person: [Mike Latorre](#), [Doug LeBlanc](#), [Sohini Palit](#)

CONTACT INFORMATION

KEVORK HORISSIAN

Associate Vice President &
Chief Analytics Officer

570.577.3623

kevork.horissian@bucknell.edu

RITA LIU

Associate Director of
Institutional Research

570.577.3619

xl005@bucknell.edu

MIKE LATORRE

Data Analytics Architect

570.577.1269

michael.latorre@bucknell.edu

DOUG LEBLANC

Data Analytics Engineer

570.577.2041

doug.leblanc@bucknell.edu

SOHINI PALIT

Data Solutions Specialist

sp061@bucknell.edu

WEI YOU

Assessment Coordinator

570.577.3558

wy005@bucknell.edu

JOCELYN ZHAO

Institutional Research &
Decision Support Analyst

570.577.2120

kz010@bucknell.edu